

1

2

3

4

A

B

A

B

Ø B.H.C.

O.D.

# B.H. X Ø B.H.

A

A

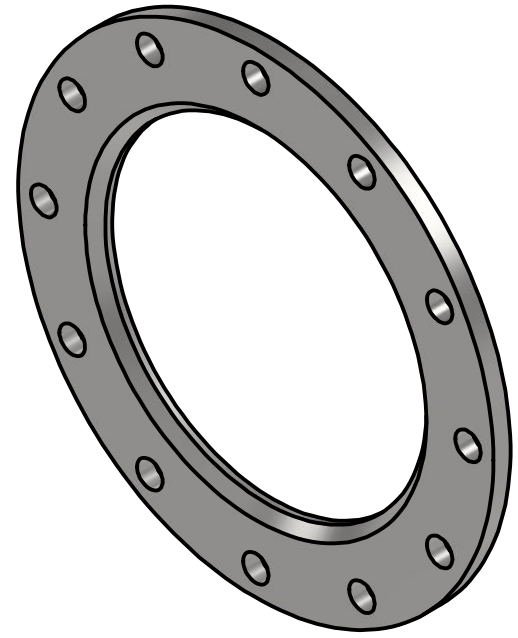
THK

45°

I.D.

BEVEL DEPTH

### SECTION A-A



TYPE: BACKING FLANGE FOR ANGLE FACE RINGS

SIZES: 1/2" - 48"

MATERIAL: STAINLESS STEEL

**FOR REFERENCE PURPOSES ONLY**

PROPERTY OF API INTERNATIONAL.  
THE DRAWING VIEWS DO NOT REFLECT  
THE FULL PRODUCT LINE CONFIGURATION.  
THE DRAWING DEPICTS API INT. PF1400-D  
TO REPRESENT A GENERIC FLANGE.



12505 SW HERMAN ROAD  
TUALATIN OR, 97062  
PH: (503) 692-3800

1

2

3

4

