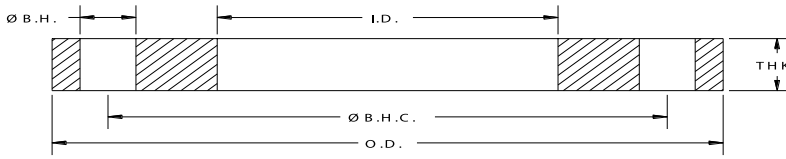


AWWA Flanges C207/C228 Specifications

Domestic & Import





AWWA Class “B” C207 Steel-Ring Flanges (86 psi)

| API Part Number | Size | O.D. | I.D. | Ø B.H.C. | Ø B.H. | # B.H. | THK | Weight Lbs |
|-----------------|------|--------|--------|----------|--------|--------|-------|------------|
| PF0400-B | 4 | 9.00 | 4.57 | 7.50 | 0.750 | 8 | 0.625 | 7.7 |
| PF0500-B | 5 | 10.00 | 5.66 | 8.50 | 0.875 | 8 | 0.625 | 8.6 |
| PF0600-B | 6 | 11.00 | 6.72 | 9.50 | 0.875 | 8 | 0.688 | 10.7 |
| PF0800-B | 8 | 13.50 | 8.72 | 11.75 | 0.875 | 8 | 0.688 | 15.3 |
| PF1000-B | 10 | 16.00 | 10.88 | 14.25 | 1.000 | 12 | 0.688 | 19.2 |
| PF1200-B | 12 | 19.00 | 12.88 | 17.00 | 1.000 | 12 | 0.688 | 28.1 |
| PF1400-B | 14 | 21.00 | 14.19 | 18.75 | 1.125 | 12 | 0.688 | 34.4 |
| PF1600-B | 16 | 23.50 | 16.19 | 21.25 | 1.125 | 16 | 0.688 | 41.3 |
| PF1800-B | 18 | 25.00 | 18.19 | 22.75 | 1.250 | 16 | 0.688 | 41.2 |
| PF2000-B | 20 | 27.50 | 20.19 | 25.00 | 1.250 | 20 | 0.688 | 48.6 |
| PF2200-B | 22 | 29.50 | 22.19 | 27.25 | 1.375 | 20 | 0.750 | 56.8 |
| PF2400-B | 24 | 32.00 | 24.19 | 29.50 | 1.375 | 20 | 0.750 | 67.0 |
| PF2600-B | 26 | 34.25 | 26.19 | 31.75 | 1.375 | 24 | 0.812 | 79.3 |
| PF2800-B | 28 | 36.50 | 28.19 | 34.00 | 1.375 | 28 | 0.875 | 93.7 |
| PF3000-B | 30 | 38.75 | 30.19 | 36.00 | 1.375 | 28 | 0.875 | 103.9 |
| PF3200-B | 32 | 41.75 | 32.19 | 38.50 | 1.625 | 28 | 0.938 | 131.3 |
| PF3400-B | 34 | 43.75 | 34.19 | 40.50 | 1.625 | 32 | 0.938 | 137.0 |
| PF3600-B | 36 | 46.00 | 36.19 | 42.75 | 1.625 | 32 | 1.000 | 159.7 |
| PF3800-B | 38 | 48.75 | 38.19 | 45.25 | 1.625 | 32 | 1.000 | 184.5 |
| PF4000-B | 40 | 50.75 | 40.19 | 47.25 | 1.625 | 36 | 1.000 | 191.5 |
| PF4200-B | 42 | 53.00 | 42.19 | 49.50 | 1.625 | 36 | 1.125 | 232.5 |
| PF4400-B | 44 | 55.25 | 44.19 | 51.75 | 1.625 | 40 | 1.125 | 247.6 |
| PF4600-B | 46 | 57.25 | 46.19 | 53.75 | 1.625 | 40 | 1.125 | 258.6 |
| PF4800-B | 48 | 59.50 | 48.19 | 56.00 | 1.625 | 44 | 1.250 | 304.9 |
| PF5000-B | 50 | 61.75 | 50.19 | 58.25 | 1.875 | 44 | 1.250 | 315.2 |
| PF5200-B | 52 | 64.00 | 52.19 | 60.50 | 1.875 | 44 | 1.250 | 336.9 |
| PF5400-B | 54 | 66.25 | 54.19 | 62.75 | 1.875 | 44 | 1.375 | 395.1 |
| PF6000-B | 60 | 73.00 | 60.19 | 69.25 | 1.875 | 52 | 1.500 | 506.1 |
| PF6600-B | 66 | 80.00 | 66.19 | 76.00 | 1.875 | 52 | 1.625 | 661.1 |
| PF7200-B | 72 | 86.50 | 72.19 | 82.50 | 1.875 | 60 | 1.750 | 798.8 |
| PF7800-B | 78 | 93.00 | 78.19 | 89.00 | 2.125 | 64 | 2.000 | 995.6 |
| PF8400-B | 84 | 99.75 | 84.19 | 95.50 | 2.125 | 64 | 2.000 | 1140.7 |
| PF9000-B | 90 | 106.50 | 90.19 | 102.00 | 2.438 | 68 | 2.250 | 1408.8 |
| PF9600-B | 96 | 113.25 | 96.19 | 108.50 | 2.438 | 68 | 2.250 | 1591.2 |
| PF10200-B | 102 | 120.00 | 102.19 | 114.50 | 2.688 | 72 | 2.500 | 1918.7 |
| PF10800-B | 108 | 126.75 | 108.19 | 120.75 | 2.688 | 72 | 2.500 | 2142.6 |
| PF11400-B | 114 | 133.50 | 114.19 | 126.75 | 2.938 | 76 | 2.750 | 2534.1 |
| PF12000-B | 120 | 140.25 | 120.19 | 132.75 | 2.938 | 76 | 2.750 | 2803.9 |
| PF12600-B | 126 | 147.00 | 126.19 | 139.25 | 3.188 | 80 | 3.000 | 3263.6 |
| PF13200-B | 132 | 153.75 | 132.19 | 145.75 | 3.188 | 80 | 3.000 | 3583.5 |
| PF14400-B | 144 | 167.25 | 144.19 | 158.25 | 3.438 | 84 | 3.250 | 4489.5 |

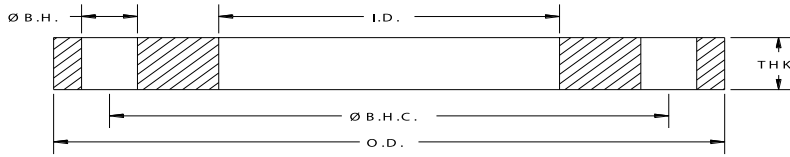
Notes:

- a. Steel material conforms to the requirements of AWWA C207 specifications. Other material is available upon request.
- b. Meets ANSI class 150 pattern.
- c. For flanges in smaller sizes see page 4.2.

Pressure Ratings: 86psi at atmospheric temperature.

ALL DIMENSIONS ARE IN INCHES UNLESS OTHERWISE STATED.

DC# 1022



AWWA Class “D” C207 Steel-Ring Flanges (150-175 psi)

| API Part Number | Size | O.D. | I.D. | Ø B.H.C. | Ø B.H. | # B.H. | THK | Weight Lbs |
|-----------------|------|--------|--------|----------|--------|--------|-------|------------|
| PF0400-D | 4 | 9.00 | 4.57 | 7.50 | 0.750 | 8 | 0.625 | 7.7 |
| PF0500-D | 5 | 10.00 | 5.66 | 8.50 | 0.875 | 8 | 0.625 | 8.6 |
| PF0600-D | 6 | 11.00 | 6.72 | 9.50 | 0.875 | 8 | 0.688 | 10.7 |
| PF0800-D | 8 | 13.50 | 8.72 | 11.75 | 0.875 | 8 | 0.688 | 15.3 |
| PF1000-D | 10 | 16.00 | 10.88 | 14.25 | 1.000 | 12 | 0.688 | 19.2 |
| PF1200-D | 12 | 19.00 | 12.88 | 17.00 | 1.000 | 12 | 0.812 | 33.1 |
| PF1400-D | 14 | 21.00 | 14.19 | 18.75 | 1.125 | 12 | 0.938 | 46.8 |
| PF1600-D | 16 | 23.50 | 16.19 | 21.25 | 1.125 | 16 | 1.000 | 60.1 |
| PF1800-D | 18 | 25.00 | 18.19 | 22.75 | 1.250 | 16 | 1.062 | 63.7 |
| PF2000-D | 20 | 27.50 | 20.19 | 25.00 | 1.250 | 20 | 1.125 | 79.5 |
| PF2200-D | 22 | 29.50 | 22.19 | 27.25 | 1.375 | 20 | 1.188 | 89.9 |
| PF2400-D | 24 | 32.00 | 24.19 | 29.50 | 1.375 | 20 | 1.250 | 111.6 |
| PF2600-D | 26 | 34.25 | 26.19 | 31.75 | 1.375 | 24 | 1.312 | 128.1 |
| PF2800-D | 28 | 36.50 | 28.19 | 34.00 | 1.375 | 28 | 1.312 | 140.6 |
| PF3000-D | 30 | 38.75 | 30.19 | 36.00 | 1.375 | 28 | 1.375 | 163.3 |
| PF3200-D | 32 | 41.75 | 32.19 | 38.50 | 1.625 | 28 | 1.500 | 210.0 |
| PF3400-D | 34 | 43.75 | 34.19 | 40.50 | 1.625 | 32 | 1.500 | 219.1 |
| PF3600-D | 36 | 46.00 | 36.19 | 42.75 | 1.625 | 32 | 1.625 | 259.4 |
| PF3800-D | 38 | 48.75 | 38.19 | 45.25 | 1.625 | 32 | 1.625 | 299.8 |
| PF4000-D | 40 | 50.75 | 40.19 | 47.25 | 1.625 | 36 | 1.625 | 311.1 |
| PF4200-D | 42 | 53.00 | 42.19 | 49.50 | 1.625 | 36 | 1.750 | 361.7 |
| PF4400-D | 44 | 55.25 | 44.19 | 51.75 | 1.625 | 40 | 1.750 | 385.1 |
| PF4600-D | 46 | 57.25 | 46.19 | 53.75 | 1.625 | 40 | 1.750 | 402.2 |
| PF4800-D | 48 | 59.50 | 48.19 | 56.00 | 1.625 | 44 | 1.875 | 457.3 |
| PF5000-D | 50 | 61.75 | 50.19 | 58.25 | 1.875 | 44 | 2.000 | 504.4 |
| PF5200-D | 52 | 64.00 | 52.19 | 60.50 | 1.875 | 44 | 2.000 | 539.1 |
| PF5400-D | 54 | 66.25 | 54.19 | 62.75 | 1.875 | 44 | 2.125 | 610.6 |
| PF6000-D | 60 | 73.00 | 60.19 | 69.25 | 1.875 | 52 | 2.250 | 759.1 |
| PF6600-D | 66 | 80.00 | 66.19 | 76.00 | 1.875 | 52 | 2.500 | 1017.0 |
| PF7200-D | 72 | 86.50 | 72.19 | 82.50 | 1.875 | 60 | 2.625 | 1198.2 |
| PF7800-D | 78 | 93.00 | 78.19 | 89.00 | 2.125 | 64 | 2.750 | 1368.9 |
| PF8400-D | 84 | 99.75 | 84.19 | 95.50 | 2.125 | 64 | 2.875 | 1639.7 |
| PF9000-D | 90 | 106.50 | 90.19 | 102.00 | 2.438 | 68 | 3.000 | 1878.2 |
| PF9600-D | 96 | 113.25 | 96.19 | 108.50 | 2.438 | 68 | 3.250 | 2298.4 |
| PF10200-D | 102 | 120.00 | 102.19 | 114.50 | 2.688 | 72 | 3.250 | 2494.3 |
| PF10800-D | 108 | 126.75 | 108.19 | 120.75 | 2.688 | 72 | 3.375 | 2892.5 |
| PF11400-D | 114 | 133.50 | 114.19 | 126.75 | 2.938 | 76 | 3.500 | 3225.2 |
| PF12000-D | 120 | 140.25 | 120.19 | 132.75 | 2.938 | 76 | 3.500 | 3568.6 |
| PF12600-D | 126 | 147.00 | 126.19 | 139.25 | 3.188 | 80 | 3.750 | 4079.5 |
| PF13200-D | 132 | 153.75 | 132.19 | 145.75 | 3.188 | 80 | 3.875 | 4628.6 |
| PF14400-D | 144 | 167.25 | 144.19 | 158.25 | 3.438 | 84 | 4.125 | 5698.3 |

Notes:

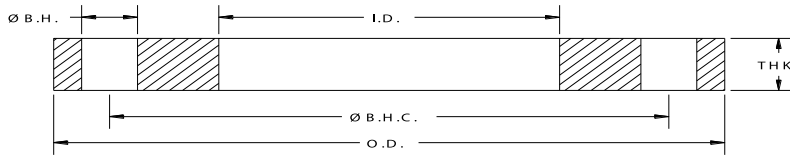
- a. Steel material conforms to the requirements of AWWA C207 specifications. Other material is available upon request.
- b. Meets ANSI class 150 pattern
- c. For flanges in smaller sizes see page 4.2.

Pressure Ratings: 175psi (4” - 12”) and 150psi (14” and larger) at atmospheric temperature.

ALL DIMENSIONS ARE IN INCHES UNLESS OTHERWISE STATED.

DC# 0723

CALL: 1-800-523-0852 FAX: 503-692-4343 VISIT: www.apiint.com



AWWA Class “D” C207 Steel-Ring Flanges for O.D. Tubing (150-175 psi)

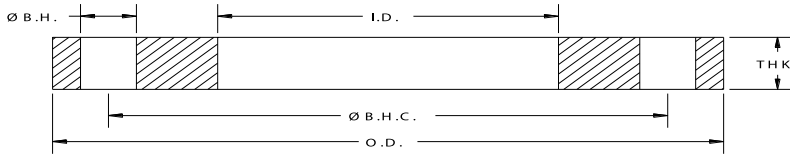
| API Part Number | Size | O.D. | I.D. | Ø B.H.C. | Ø B.H. | # B.H. | THK | Weight Lbs |
|-----------------|------|-------|-------|----------|--------|--------|-------|------------|
| PFO400-D-16 | 4 | 9.00 | 4.06 | 7.50 | 0.750 | 8 | 0.625 | 8.5 |
| PFO500-D-16 | 5 | 10.00 | 5.06 | 8.50 | 0.875 | 8 | 0.625 | 9.6 |
| PFO600-D-16 | 6 | 11.00 | 6.09 | 9.50 | 0.875 | 8 | 0.688 | 12.0 |
| PFO800-D-16 | 8 | 13.50 | 8.09 | 11.75 | 0.875 | 8 | 0.688 | 17.1 |
| PF1000-D-16 | 10 | 16.00 | 10.12 | 14.25 | 1.000 | 12 | 0.688 | 22.0 |
| PF1200-D-16 | 12 | 19.00 | 12.12 | 17.00 | 1.000 | 12 | 0.812 | 37.9 |

Notes:

- a. Steel material conforms to the requirements of AWWA C207 specifications. Other material is available upon request.
- b. Meets ANSI class 150 pattern.

Pressure Ratings: 175psi (4" - 12") 150psi (14" and larger) at atmospheric temperature.

ALL DIMENSIONS ARE IN INCHES UNLESS OTHERWISE STATED.



AWWA Class “E” C207 Steel-Ring Flanges (275psi)

| API Part Number | Size | O.D. | I.D. | Ø B.H.C. | Ø B.H. | # B.H. | THK | Weight Lbs |
|-----------------|------|--------|--------|----------|--------|--------|-------|------------|
| PF0400-E | 4 | 9.00 | 4.57 | 7.50 | 0.750 | 8 | 1.125 | 13.9 |
| PF0500-E | 5 | 10.00 | 5.66 | 8.50 | 0.875 | 8 | 1.188 | 16.3 |
| PF0600-E | 6 | 11.00 | 6.72 | 9.50 | 0.875 | 8 | 1.313 | 20.4 |
| PF0800-E | 8 | 13.50 | 8.72 | 11.75 | 0.875 | 8 | 1.500 | 33.4 |
| PF1000-E | 10 | 16.00 | 10.88 | 14.25 | 1.000 | 12 | 1.563 | 43.7 |
| PF1200-E | 12 | 19.00 | 12.88 | 17.00 | 1.000 | 12 | 1.750 | 71.4 |
| PF1400-E | 14 | 21.00 | 14.19 | 18.75 | 1.125 | 12 | 1.875 | 93.7 |
| PF1600-E | 16 | 23.50 | 16.19 | 21.25 | 1.125 | 16 | 2.000 | 120.2 |
| PF1800-E | 18 | 25.00 | 18.19 | 22.75 | 1.250 | 16 | 2.125 | 127.3 |
| PF2000-E | 20 | 27.50 | 20.19 | 25.00 | 1.250 | 20 | 2.375 | 167.8 |
| PF2200-E | 22 | 29.50 | 22.19 | 27.25 | 1.375 | 20 | 2.500 | 189.2 |
| PF2400-E | 24 | 32.00 | 24.19 | 29.50 | 1.375 | 20 | 2.625 | 234.3 |
| PF2600-E | 26 | 34.25 | 26.19 | 31.75 | 1.375 | 24 | 2.750 | 268.4 |
| PF2800-E | 28 | 36.50 | 28.19 | 34.00 | 1.375 | 28 | 2.750 | 294.5 |
| PF3000-E | 30 | 38.75 | 30.19 | 36.00 | 1.375 | 28 | 2.875 | 341.4 |
| PF3200-E | 32 | 41.75 | 32.19 | 38.50 | 1.625 | 28 | 3.000 | 420.0 |
| PF3400-E | 34 | 43.75 | 34.19 | 40.50 | 1.625 | 32 | 3.000 | 438.3 |
| PF3600-E | 36 | 46.00 | 36.19 | 42.75 | 1.625 | 32 | 3.125 | 498.9 |
| PF3800-E | 38 | 48.75 | 38.19 | 45.25 | 1.625 | 32 | 3.125 | 576.5 |
| PF4000-E | 40 | 50.75 | 40.19 | 47.25 | 1.625 | 36 | 3.250 | 622.3 |
| PF4200-E | 42 | 53.00 | 42.19 | 49.50 | 1.625 | 36 | 3.375 | 697.6 |
| PF4400-E | 44 | 55.25 | 44.19 | 51.75 | 1.625 | 40 | 3.375 | 742.7 |
| PF4600-E | 46 | 57.25 | 46.19 | 53.75 | 1.625 | 40 | 3.438 | 790.2 |
| PF4800-E | 48 | 59.50 | 48.19 | 56.00 | 1.625 | 44 | 3.500 | 853.6 |
| PF5000-E | 50 | 61.75 | 50.19 | 58.25 | 1.875 | 44 | 3.500 | 882.7 |
| PF5200-E | 52 | 64.00 | 52.19 | 60.50 | 1.875 | 44 | 3.625 | 977.1 |
| PF5400-E | 54 | 66.25 | 54.19 | 62.75 | 1.875 | 44 | 3.750 | 1077.6 |
| PF6000-E | 60 | 73.00 | 60.19 | 69.25 | 1.875 | 52 | 3.875 | 1307.4 |
| PF6600-E | 66 | 80.00 | 66.19 | 76.00 | 1.875 | 52 | 4.250 | 1729.0 |
| PF7200-E | 72 | 86.50 | 72.19 | 82.50 | 1.875 | 60 | 4.375 | 1997.0 |
| PF7800-E | 78 | 93.00 | 78.19 | 89.00 | 2.125 | 64 | 4.750 | 2364.5 |
| PF8400-E | 84 | 99.75 | 84.19 | 95.50 | 2.125 | 64 | 4.750 | 2709.1 |
| PF9000-E | 90 | 106.50 | 90.19 | 102.00 | 2.438 | 68 | 5.125 | 3208.8 |
| PF9600-E | 96 | 113.25 | 96.19 | 108.50 | 2.438 | 68 | 5.125 | 3624.3 |
| PF10200-E | 102 | 120.00 | 102.19 | 114.50 | 2.688 | 72 | 5.500 | 4221.1 |
| PF10800-E | 108 | 126.75 | 108.19 | 120.75 | 2.688 | 72 | 5.500 | 4713.8 |
| PF11400-E | 114 | 133.50 | 114.19 | 126.75 | 2.938 | 76 | 5.875 | 5413.8 |
| PF12000-E | 120 | 140.25 | 120.19 | 132.75 | 2.938 | 76 | 5.875 | 5990.1 |
| PF12600-E | 126 | 147.00 | 126.19 | 139.25 | 3.188 | 80 | 6.250 | 6799.2 |
| PF13200-E | 132 | 153.75 | 132.19 | 145.75 | 3.188 | 80 | 6.250 | 8062.8 |
| PF14400-E | 144 | 167.25 | 144.19 | 158.25 | 3.438 | 84 | 6.750 | 9346.0 |

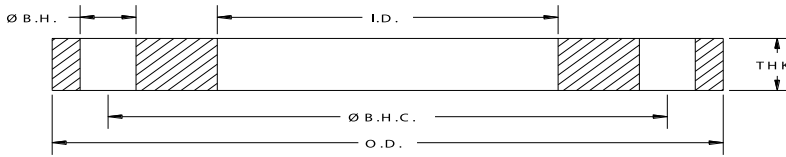
Notes:

- a. Steel material conforms to the requirements of AWWA C207 specifications. Other material is available upon request.
- b. Meets ANSI class 150 pattern.
- c. For flanges in smaller sizes see page 4.2.

Pressure Ratings: 275psi at atmospheric temperature.

ALL DIMENSIONS ARE IN INCHES UNLESS OTHERWISE STATED.

DC# 0723



AWWA Class “F” C207 Steel-Ring Flanges (300 psi)

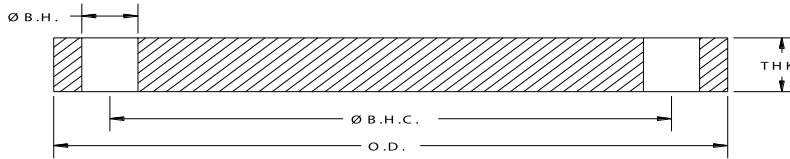
| API Part Number | Size | O.D. | I.D. | Ø B.H.C. | Ø B.H. | # B.H. | THK | Weight Lbs |
|-----------------|------|-------|-------|----------|--------|--------|-------|------------|
| PF0400-F | 4 | 10.00 | 4.57 | 7.88 | 0.875 | 8 | 1.130 | 18.4 |
| PF0500-F | 5 | 11.00 | 5.66 | 9.25 | 0.875 | 8 | 1.210 | 22.3 |
| PF0600-F | 6 | 12.50 | 6.73 | 10.62 | 0.875 | 12 | 1.310 | 29.7 |
| PF0800-F | 8 | 15.00 | 8.73 | 13.00 | 1.000 | 12 | 1.310 | 39.9 |
| PF1000-F | 10 | 17.50 | 10.88 | 15.25 | 1.125 | 16 | 1.500 | 56.0 |
| PF1200-F | 12 | 20.50 | 12.88 | 17.75 | 1.250 | 16 | 1.630 | 83.2 |
| PF1400-F | 14 | 23.00 | 14.19 | 20.25 | 1.250 | 20 | 1.940 | 128.0 |
| PF1600-F | 16 | 25.50 | 16.19 | 22.50 | 1.375 | 20 | 2.140 | 166.8 |
| PF1800-F | 18 | 28.00 | 18.19 | 24.75 | 1.375 | 24 | 2.250 | 204.2 |
| PF2000-F | 20 | 30.50 | 20.19 | 27.00 | 1.375 | 24 | 2.330 | 247.4 |
| PF2200-F | 22 | 33.00 | 22.19 | 29.25 | 1.375 | 24 | 2.500 | 306.7 |
| PF2400-F | 24 | 36.00 | 24.19 | 32.00 | 1.625 | 24 | 2.690 | 387.6 |
| PF2600-F | 26 | 38.25 | 26.19 | 34.50 | 1.875 | 28 | 3.000 | 451.0 |
| PF2800-F | 28 | 40.75 | 28.19 | 37.00 | 1.875 | 28 | 3.130 | 532.2 |
| PF3000-F | 30 | 43.00 | 30.19 | 39.25 | 1.875 | 28 | 3.150 | 585.7 |
| PF3200-F | 32 | 45.25 | 32.19 | 41.50 | 1.875 | 28 | 3.250 | 657.5 |
| PF3400-F | 34 | 47.50 | 34.19 | 43.50 | 1.875 | 28 | 3.380 | 743.0 |
| PF3600-F | 36 | 50.00 | 36.19 | 46.00 | 2.125 | 32 | 3.460 | 801.9 |
| PF3800-F | 38 | 52.25 | 38.19 | 48.00 | 2.125 | 32 | 3.500 | 874.3 |
| PF4000-F | 40 | 54.25 | 40.19 | 50.25 | 2.125 | 36 | 3.630 | 937.4 |
| PF4200-F | 42 | 57.00 | 42.19 | 52.75 | 2.125 | 36 | 3.810 | 1103.4 |
| PF4400-F | 44 | 59.25 | 44.19 | 55.00 | 2.125 | 36 | 4.000 | 1237.2 |
| PF4600-F | 46 | 61.50 | 46.19 | 57.25 | 2.125 | 40 | 4.130 | 1360.8 |
| PF4800-F | 48 | 65.00 | 48.19 | 60.75 | 2.125 | 40 | 4.500 | 1736.8 |

Notes:

- a. Steel material conforms to the requirements of AWWA C207 specifications. Other material is available upon request.
- b. Meets ANSI class 300 pattern.

Pressure Ratings: 300psi at atmospheric temperature.

ALL DIMENSIONS ARE IN INCHES UNLESS OTHERWISE STATED.



AWWA Class “B” Steel Blind Flanges - 2013 Specs (86 psi)

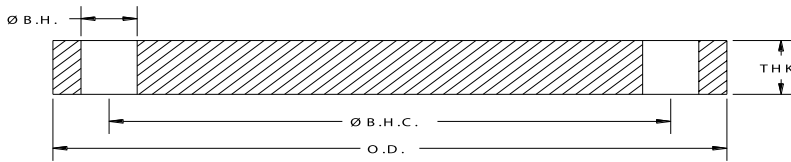
| API Part Number | Size | O.D. | I.D. | Ø B.H.C. | Ø B.H. | # B.H. | THK | Weight Lbs |
|-----------------|------|-------|-------|----------|--------|--------|-------|------------|
| PFBL0400-B | 4 | 9.00 | BLIND | 7.50 | 0.750 | 8 | 0.625 | 10.6 |
| PFBL0500-B | 5 | 10.00 | BLIND | 8.50 | 0.875 | 8 | 0.625 | 13.0 |
| PFBL0600-B | 6 | 11.00 | BLIND | 9.50 | 0.875 | 8 | 0.688 | 17.6 |
| PFBL0800-B | 8 | 13.50 | BLIND | 11.75 | 0.875 | 8 | 0.688 | 27.0 |
| PFBL1000-B | 10 | 16.00 | BLIND | 14.25 | 1.000 | 12 | 0.688 | 38.5 |
| PFBL1200-B | 12 | 19.00 | BLIND | 17.00 | 1.000 | 12 | 0.719 | 67.0 |
| PFBL1400-B | 14 | 21.00 | BLIND | 18.75 | 1.125 | 12 | 0.791 | 80.0 |
| PFBL1600-B | 16 | 23.50 | BLIND | 21.25 | 1.125 | 16 | 0.892 | 105.0 |
| PFBL1800-B | 18 | 25.00 | BLIND | 22.75 | 1.250 | 16 | 0.950 | 132.0 |
| PFBL2000-B | 20 | 27.50 | BLIND | 25.00 | 1.250 | 20 | 1.040 | 186.0 |
| PFBL2200-B | 22 | 29.50 | BLIND | 27.25 | 1.375 | 20 | 1.132 | 209.0 |
| PFBL2400-B | 24 | 32.00 | BLIND | 29.50 | 1.375 | 20 | 1.216 | 268.0 |
| PFBL2600-B | 26 | 34.25 | BLIND | 31.75 | 1.375 | 24 | 1.307 | 328.0 |
| PFBL2800-B | 28 | 36.50 | BLIND | 34.00 | 1.375 | 28 | 1.398 | 397.0 |
| PFBL3000-B | 30 | 38.75 | BLIND | 36.00 | 1.375 | 28 | 1.477 | 488.0 |
| PFBL3200-B | 32 | 41.75 | BLIND | 38.50 | 1.625 | 28 | 1.581 | 586.0 |
| PFBL3400-B | 34 | 43.75 | BLIND | 40.50 | 1.625 | 32 | 1.661 | 675.0 |
| PFBL3600-B | 36 | 46.00 | BLIND | 42.75 | 1.625 | 32 | 1.751 | 790.0 |
| PFBL3800-B | 38 | 48.75 | BLIND | 45.25 | 1.625 | 32 | 1.853 | 944.0 |
| PFBL4000-B | 40 | 50.75 | BLIND | 47.25 | 1.625 | 36 | 1.933 | 1066.0 |
| PFBL4200-B | 42 | 53.00 | BLIND | 49.50 | 1.625 | 36 | 2.023 | 1220.0 |
| PFBL4400-B | 44 | 55.25 | BLIND | 51.75 | 1.625 | 40 | 2.114 | 1385.0 |
| PFBL4600-B | 46 | 57.25 | BLIND | 53.75 | 1.625 | 40 | 2.194 | 1547.0 |
| PFBL4800-B | 48 | 59.50 | BLIND | 56.00 | 1.625 | 44 | 2.285 | 1739.0 |
| PFBL5000-B | 50 | 61.75 | BLIND | 58.25 | 1.875 | 44 | 2.377 | 1934.0 |
| PFBL5200-B | 52 | 64.00 | BLIND | 60.50 | 1.875 | 44 | 2.468 | 2163.0 |
| PFBL5400-B | 54 | 66.25 | BLIND | 62.75 | 1.875 | 44 | 2.559 | 2408.0 |
| PFBL6000-B | 60 | 73.00 | BLIND | 69.25 | 1.875 | 52 | 2.820 | 3225.0 |
| PFBL6600-B | 66 | 80.00 | BLIND | 76.00 | 1.875 | 52 | 3.092 | 4272.0 |
| PFBL7200-B | 72 | 86.50 | BLIND | 82.50 | 1.875 | 60 | 3.353 | 5418.0 |

Notes:

- a. Steel material conforms to the requirements of AWWA C207 specifications. Other material is available upon request.
- b. Meets ANSI class 150 pattern.
- c. AWWA recommends the use of Dish Assemblies for sizes above 72". Call API customer service for additional information.

Pressure Ratings: 86psi at atmospheric temperature.

ALL DIMENSIONS ARE IN INCHES UNLESS OTHERWISE STATED.



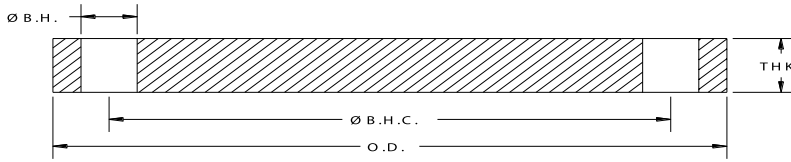
AWWA Class “D” Steel Blind Flanges (150 - 175 psi)

| API Part Number | Size | O.D. | I.D. | Ø B.H.C. | Ø B.H. | # B.H. | THK | Weight Lbs |
|-----------------|------|-------|-------|----------|--------|--------|-------|------------|
| PFBL0400-D | 4 | 9.00 | BLIND | 7.50 | 0.750 | 8 | 0.625 | 10.6 |
| PFBL0500-D | 5 | 10.00 | BLIND | 8.50 | 0.875 | 8 | 0.650 | 13.6 |
| PFBL0600-D | 6 | 11.00 | BLIND | 9.50 | 0.875 | 8 | 0.693 | 17.7 |
| PFBL0800-D | 8 | 13.50 | BLIND | 11.75 | 0.875 | 8 | 0.812 | 31.8 |
| PFBL1000-D | 10 | 16.00 | BLIND | 14.25 | 1.000 | 12 | 0.953 | 51.7 |
| PFBL1200-D | 12 | 19.00 | BLIND | 17.00 | 1.000 | 12 | 1.117 | 86.7 |
| PFBL1400-D | 14 | 21.00 | BLIND | 18.75 | 1.125 | 12 | 1.133 | 107.4 |
| PFBL1600-D | 16 | 23.50 | BLIND | 21.25 | 1.125 | 16 | 1.265 | 149.8 |
| PFBL1800-D | 18 | 25.00 | BLIND | 22.75 | 1.250 | 16 | 1.331 | 177.7 |
| PFBL2000-D | 20 | 27.50 | BLIND | 25.00 | 1.250 | 20 | 1.448 | 233.6 |
| PFBL2200-D | 22 | 29.50 | BLIND | 27.25 | 1.375 | 20 | 1.568 | 290.5 |
| PFBL2400-D | 24 | 32.00 | BLIND | 29.50 | 1.375 | 20 | 1.661 | 364.5 |
| PFBL2600-D | 26 | 34.25 | BLIND | 31.75 | 1.375 | 24 | 1.786 | 448.2 |
| PFBL2800-D | 28 | 36.50 | BLIND | 34.00 | 1.375 | 28 | 1.906 | 542.6 |
| PFBL3000-D | 30 | 38.75 | BLIND | 36.00 | 1.375 | 28 | 2.008 | 647.3 |
| PFBL3200-D | 32 | 41.75 | BLIND | 38.50 | 1.625 | 28 | 2.150 | 798.6 |
| PFBL3400-D | 34 | 43.75 | BLIND | 40.50 | 1.625 | 32 | 2.252 | 916.9 |
| PFBL3600-D | 36 | 46.00 | BLIND | 42.75 | 1.625 | 32 | 2.370 | 1071.4 |
| PFBL3800-D | 38 | 48.75 | BLIND | 45.25 | 1.625 | 32 | 2.506 | 1278.2 |
| PFBL4000-D | 40 | 50.75 | BLIND | 47.25 | 1.625 | 36 | 2.609 | 1440.1 |
| PFBL4200-D | 42 | 53.00 | BLIND | 49.50 | 1.625 | 36 | 2.729 | 1648.1 |
| PFBL4400-D | 44 | 55.25 | BLIND | 51.75 | 1.625 | 40 | 2.849 | 1868.2 |
| PFBL4600-D | 46 | 57.25 | BLIND | 53.75 | 1.625 | 40 | 2.952 | 2083.7 |
| PFBL4800-D | 48 | 59.50 | BLIND | 56.00 | 1.625 | 44 | 3.072 | 2340.7 |
| PFBL5000-D | 50 | 61.75 | BLIND | 58.25 | 1.875 | 44 | 3.196 | 2601.9 |
| PFBL5200-D | 52 | 64.00 | BLIND | 60.50 | 1.875 | 44 | 3.315 | 2907.5 |
| PFBL5400-D | 54 | 66.25 | BLIND | 62.75 | 1.875 | 44 | 3.435 | 3236.7 |
| PFBL6000-D | 60 | 73.00 | BLIND | 69.25 | 1.875 | 52 | 3.779 | 4327.6 |
| PFBL6600-D | 66 | 80.00 | BLIND | 76.00 | 1.875 | 52 | 4.136 | 5722.2 |
| PFBL7200-D | 72 | 86.50 | BLIND | 82.50 | 1.875 | 60 | 4.480 | 7249.0 |

Notes:

- a. Steel material conforms to the requirements of AWWA C207 specifications. Other material is available upon request.
- b. Meets ANSI class 150 pattern.
- c. AWWA recommends the use of Dish Assemblies for sizes above 72". Call API customer service for additional information.

Pressure Ratings: 175psi (4" - 12") and 150psi (14" and larger) at atmospheric temperature.

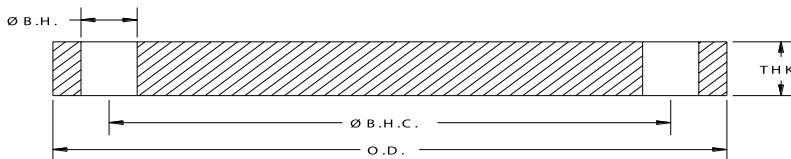


AWWA Steel Blind Flanges - 1986 Spec's (for low pressure)

| API Part Number | Size | O.D. | I.D. | Ø B.H.C. | Ø B.H. | # B.H. | THK | Weight Lbs |
|-----------------|------|-------|-------|----------|--------|--------|-------|------------|
| PFBL0400-86 | 4 | 9.00 | BLIND | 7.50 | 0.750 | 8 | 0.625 | 11.0 |
| PFBL0500-86 | 5 | 10.00 | BLIND | 8.50 | 0.875 | 8 | 0.625 | 13.0 |
| PFBL0600-86 | 6 | 11.00 | BLIND | 9.50 | 0.875 | 8 | 0.688 | 18.0 |
| PFBL0800-86 | 8 | 13.50 | BLIND | 11.75 | 0.875 | 8 | 0.688 | 27.0 |
| PFBL1000-86 | 10 | 16.00 | BLIND | 14.25 | 1.000 | 12 | 0.688 | 38.0 |
| PFBL1200-86 | 12 | 19.00 | BLIND | 17.00 | 1.000 | 12 | 0.813 | 64.0 |
| PFBL1400-86 | 14 | 21.00 | BLIND | 18.75 | 1.125 | 12 | 0.938 | 88.0 |
| PFBL1600-86 | 16 | 23.50 | BLIND | 21.25 | 1.125 | 16 | 1.000 | 118.0 |
| PFBL1800-86 | 18 | 25.00 | BLIND | 22.75 | 1.250 | 16 | 1.063 | 141.0 |
| PFBL2000-86 | 20 | 27.50 | BLIND | 25.00 | 1.250 | 20 | 1.125 | 181.0 |
| PFBL2400-86 | 24 | 32.00 | BLIND | 29.50 | 1.375 | 20 | 1.250 | 273.0 |
| PFBL3000-86 | 30 | 38.75 | BLIND | 36.00 | 1.375 | 28 | 1.375 | 436.0 |
| PFBL3600-86 | 36 | 46.00 | BLIND | 42.75 | 1.625 | 32 | 1.625 | 735.0 |
| PFBL4200-86 | 42 | 53.00 | BLIND | 49.50 | 1.625 | 36 | 1.750 | 1057.0 |
| PFBL4800-86 | 48 | 59.50 | BLIND | 56.00 | 1.625 | 44 | 1.875 | 1428.0 |
| PFBL6000-86 | 60 | 73.00 | BLIND | 69.25 | 1.875 | 52 | 2.250 | 2574.0 |

Notes:

- a. Steel material conforms to the requirements of AWWA C207 specifications. Other material is available upon request.
- b. Meets ANSI class 150 pattern.
- c. Manufactured to AWWA C207-1986 specifications.
- d. AWWA recommends the use of Dish Assemblies for sizes above 72". Call API customer service for additional information.



AWWA Class “E” Steel Blind Flanges (275 psi)

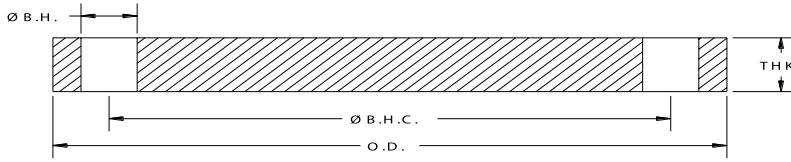
| API Part Number | Size | O.D. | I.D. | Ø B.H.C. | Ø B.H. | # B.H. | THK | Weight Lbs |
|-----------------|------|-------|-------|----------|--------|--------|-------|------------|
| PFBL0400-E | 4 | 9.00 | BLIND | 7.50 | 0.750 | 8 | 1.125 | 19.2 |
| PFBL0500-E | 5 | 10.00 | BLIND | 8.50 | 0.875 | 8 | 1.188 | 24.8 |
| PFBL0600-E | 6 | 11.00 | BLIND | 9.50 | 0.875 | 8 | 1.313 | 33.6 |
| PFBL0800-E | 8 | 13.50 | BLIND | 11.75 | 0.875 | 8 | 1.500 | 58.8 |
| PFBL1000-E | 10 | 16.00 | BLIND | 14.25 | 1.000 | 12 | 1.563 | 84.9 |
| PFBL1200-E | 12 | 19.00 | BLIND | 17.00 | 1.000 | 12 | 1.750 | 135.9 |
| PFBL1400-E | 14 | 21.00 | BLIND | 18.75 | 1.125 | 12 | 1.875 | 177.7 |
| PFBL1600-E | 16 | 23.50 | BLIND | 21.25 | 1.125 | 16 | 2.000 | 236.8 |
| PFBL1800-E | 18 | 25.00 | BLIND | 22.75 | 1.250 | 16 | 2.125 | 283.7 |
| PFBL2000-E | 20 | 27.50 | BLIND | 25.00 | 1.250 | 20 | 2.375 | 383.2 |
| PFBL2200-E | 22 | 29.50 | BLIND | 27.25 | 1.375 | 20 | 2.500 | 463.1 |
| PFBL2400-E | 24 | 32.00 | BLIND | 29.50 | 1.375 | 20 | 2.625 | 576.1 |
| PFBL2600-E | 26 | 34.25 | BLIND | 31.75 | 1.375 | 24 | 2.750 | 690.1 |
| PFBL2800-E | 28 | 36.50 | BLIND | 34.00 | 1.375 | 28 | 2.750 | 782.9 |
| PFBL3000-E | 30 | 38.75 | BLIND | 36.00 | 1.375 | 28 | 2.875 | 926.8 |
| PFBL3200-E | 32 | 41.75 | BLIND | 38.50 | 1.625 | 28 | 3.000 | 1114.3 |
| PFBL3400-E | 34 | 43.75 | BLIND | 40.50 | 1.625 | 32 | 3.050 | 1241.8 |
| PFBL3600-E | 36 | 46.00 | BLIND | 42.75 | 1.625 | 32 | 3.209 | 1450.7 |
| PFBL3800-E | 38 | 48.75 | BLIND | 45.25 | 1.625 | 32 | 3.394 | 1731.1 |
| PFBL4000-E | 40 | 50.75 | BLIND | 47.25 | 1.625 | 36 | 3.533 | 1950.2 |
| PFBL4200-E | 42 | 53.00 | BLIND | 49.50 | 1.625 | 36 | 3.695 | 2231.5 |
| PFBL4400-E | 44 | 55.25 | BLIND | 51.75 | 1.625 | 40 | 3.857 | 2529.4 |
| PFBL4600-E | 46 | 57.25 | BLIND | 53.75 | 1.625 | 40 | 3.997 | 2821.3 |
| PFBL4800-E | 48 | 59.50 | BLIND | 56.00 | 1.625 | 44 | 4.159 | 3169.0 |
| PFBL5000-E | 50 | 61.75 | BLIND | 58.25 | 1.875 | 44 | 4.327 | 3522.6 |
| PFBL5200-E | 52 | 64.00 | BLIND | 60.50 | 1.875 | 44 | 4.489 | 3937.1 |
| PFBL5400-E | 54 | 66.25 | BLIND | 62.75 | 1.875 | 44 | 4.651 | 4382.5 |
| PFBL6000-E | 60 | 73.00 | BLIND | 69.25 | 1.875 | 52 | 5.116 | 5858.7 |
| PFBL6600-E | 66 | 80.00 | BLIND | 76.00 | 1.875 | 52 | 5.601 | 7749.0 |
| PFBL7200-E | 72 | 86.50 | BLIND | 82.50 | 1.875 | 60 | 6.066 | 9815.3 |

Notes:

- a. Steel material conforms to the requirements of AWWA C207 specifications. Other material is available upon request.
- b. Meets ANSI class 150 pattern.
- c. AWWA recommends the use of Dish Assemblies for sizes above 72". Call API customer service for additional information.

Pressure Ratings: 275psi at atmospheric temperature.

ALL DIMENSIONS ARE IN INCHES UNLESS OTHERWISE STATED.



AWWA Class “F” Steel Blind Flanges (300 psi)

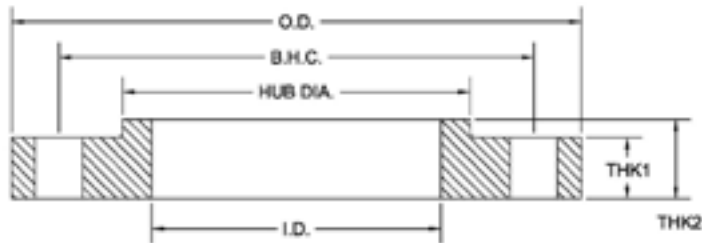
| API Part Number | Size | O.D. | I.D. | Ø B.H.C. | Ø B.H. | # B.H. | THK | Weight Lbs |
|-----------------|------|-------|-------|----------|--------|--------|-------|------------|
| PFBL0400-F | 4 | 10.00 | BLIND | 7.88 | 0.875 | 8 | 1.130 | 23.6 |
| PFBL0500-F | 5 | 11.00 | BLIND | 9.25 | 0.875 | 8 | 1.210 | 30.9 |
| PFBL0600-F | 6 | 12.50 | BLIND | 10.62 | 0.875 | 12 | 1.310 | 42.9 |
| PFBL0800-F | 8 | 15.00 | BLIND | 13.00 | 1.000 | 12 | 1.310 | 62.1 |
| PFBL1000-F | 10 | 17.50 | BLIND | 15.25 | 1.125 | 16 | 1.500 | 95.5 |
| PFBL1200-F | 12 | 20.50 | BLIND | 17.75 | 1.250 | 16 | 1.630 | 143.4 |
| PFBL1400-F | 14 | 23.00 | BLIND | 20.25 | 1.250 | 20 | 1.940 | 214.9 |
| PFBL1600-F | 16 | 25.50 | BLIND | 22.50 | 1.375 | 20 | 2.140 | 291.7 |
| PFBL1800-F | 18 | 28.00 | BLIND | 24.75 | 1.375 | 24 | 2.250 | 369.8 |
| PFBL2000-F | 20 | 30.50 | BLIND | 27.00 | 1.375 | 24 | 2.330 | 458.8 |
| PFBL2200-F | 22 | 33.00 | BLIND | 29.25 | 1.375 | 24 | 2.500 | 580.6 |
| PFBL2400-F | 24 | 36.00 | BLIND | 32.00 | 1.625 | 24 | 2.690 | 737.9 |
| PFBL2600-F | 26 | 38.25 | BLIND | 34.50 | 1.875 | 28 | 3.000 | 911.0 |
| PFBL2800-F | 28 | 40.75 | BLIND | 37.00 | 1.875 | 28 | 3.130 | 1088.0 |
| PFBL3000-F | 30 | 43.00 | BLIND | 39.25 | 1.875 | 28 | 3.166 | 1233.3 |
| PFBL3200-F | 32 | 45.25 | BLIND | 41.50 | 1.875 | 28 | 3.332 | 1445.2 |
| PFBL3400-F | 34 | 47.50 | BLIND | 43.50 | 1.875 | 28 | 3.475 | 1668.6 |
| PFBL3600-F | 36 | 50.00 | BLIND | 46.00 | 2.125 | 32 | 3.671 | 1924.2 |
| PFBL3800-F | 38 | 52.25 | BLIND | 48.00 | 2.125 | 32 | 3.815 | 2195.0 |
| PFBL4000-F | 40 | 54.25 | BLIND | 50.25 | 2.125 | 36 | 3.982 | 2463.8 |
| PFBL4200-F | 42 | 57.00 | BLIND | 52.75 | 2.125 | 36 | 4.171 | 2864.7 |
| PFBL4400-F | 44 | 59.25 | BLIND | 55.00 | 2.125 | 36 | 4.338 | 3231.9 |
| PFBL4600-F | 46 | 61.50 | BLIND | 57.25 | 2.125 | 40 | 4.505 | 3628.7 |
| PFBL4800-F | 48 | 65.00 | BLIND | 60.75 | 2.125 | 40 | 4.781 | 4322.1 |

Notes:

- a. Steel material conforms to the requirements of AWWA C207 specifications. Other material is available upon request.
- b. Meets ANSI class 300 pattern.

Pressure Ratings: 300psi at atmospheric temperature.

ALL DIMENSIONS ARE IN INCHES UNLESS OTHERWISE STATED.



AWWA Class “D” Steel Hub Ring Flange (150-175 psi)

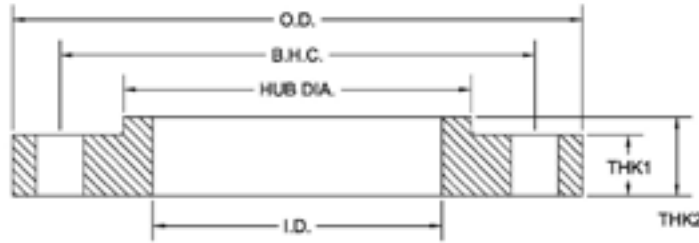
| API Part Number | Size | O.D. | I.D. | Ø B.H.C. | Ø B.H. | # B.H. | THK | L | H.D. | Weight Lbs |
|-----------------|------|--------|-------|----------|--------|--------|-------|-------|---------|------------|
| PF0400-D-H | 4 | 9.00 | 4.57 | 7.50 | 0.750 | 8 | 0.500 | 0.875 | 5.312 | 6.8 |
| PF0500-D-H | 5 | 10.00 | 5.66 | 8.50 | 0.875 | 8 | 0.562 | 1.250 | 6.312 | 8.9 |
| PF0600-D-H | 6 | 11.00 | 6.72 | 9.50 | 0.875 | 8 | 0.562 | 1.250 | 7.562 | 10.5 |
| PF0800-D-H | 8 | 13.50 | 8.72 | 11.75 | 0.875 | 8 | 0.562 | 1.250 | 9.688 | 15.2 |
| PF1000-D-H | 10 | 16.00 | 10.88 | 14.25 | 1.000 | 12 | 0.688 | 1.250 | 12.000 | 22.4 |
| PF1200-D-H | 12 | 19.00 | 12.88 | 17.00 | 1.000 | 12 | 0.688 | 1.250 | 14.375 | 33.1 |
| PF1400-D-H | 14 | 21.00 | 14.19 | 18.75 | 1.125 | 12 | 0.750 | 1.250 | 15.750 | 42.6 |
| PF1600-D-H | 16 | 23.50 | 16.19 | 21.25 | 1.125 | 16 | 0.750 | 1.250 | 18.000 | 51.9 |
| PF1800-D-H | 18 | 25.00 | 18.19 | 22.75 | 1.250 | 16 | 0.750 | 1.250 | 19.875 | 52.0 |
| PF2000-D-H | 20 | 27.50 | 20.19 | 25.00 | 1.250 | 20 | 0.750 | 1.250 | 22.000 | 61.4 |
| PF2200-D-H | 22 | 29.50 | 22.19 | 27.25 | 1.375 | 20 | 1.000 | 1.750 | 24.250 | 91.5 |
| PF2400-D-H | 24 | 32.00 | 24.19 | 29.50 | 1.375 | 20 | 1.000 | 1.750 | 26.125 | 105.0 |
| PF2600-D-H | 26 | 34.25 | 26.19 | 31.75 | 1.375 | 24 | 1.000 | 1.750 | 28.500 | 119.0 |
| PF2800-D-H | 28 | 36.50 | 28.19 | 34.00 | 1.375 | 28 | 1.000 | 1.750 | 30.500 | 129.0 |
| PF3000-D-H | 30 | 38.75 | 30.19 | 36.00 | 1.375 | 28 | 1.000 | 1.750 | 32.500 | 143.0 |
| PF3200-D-H | 32 | 41.75 | 32.19 | 38.50 | 1.625 | 28 | 1.125 | 1.750 | 34.750 | 180.0 |
| PF3400-D-H | 34 | 43.75 | 34.19 | 40.50 | 1.625 | 32 | 1.125 | 1.750 | 36.750 | 189.0 |
| PF3600-D-H | 36 | 46.00 | 36.19 | 42.75 | 1.625 | 32 | 1.125 | 1.750 | 38.750 | 206.0 |
| PF3800-D-H | 38 | 48.75 | 38.19 | 45.25 | 1.625 | 32 | 1.125 | 1.750 | 40.750 | 236.0 |
| PF4000-D-H | 40 | 50.75 | 40.19 | 47.25 | 1.625 | 36 | 1.125 | 1.750 | 43.000 | 247.0 |
| PF4200-D-H | 42 | 53.00 | 42.19 | 49.50 | 1.625 | 36 | 1.250 | 1.750 | 45.000 | 285.0 |
| PF4400-D-H | 44 | 55.25 | 44.19 | 51.75 | 1.625 | 40 | 1.250 | 2.250 | 47.000 | 333.0 |
| PF4600-D-H | 46 | 57.25 | 46.19 | 53.75 | 1.625 | 40 | 1.250 | 2.250 | 49.000 | 348.0 |
| PF4800-D-H | 48 | 59.50 | 48.19 | 56.00 | 1.625 | 44 | 1.375 | 2.500 | 51.000 | 404.0 |
| PF5000-D-H | 50 | 61.75 | 50.19 | 58.25 | 1.875 | 44 | 1.375 | 2.500 | 53.000 | 420.0 |
| PF5200-D-H | 52 | 64.00 | 52.19 | 60.50 | 1.875 | 44 | 1.375 | 2.500 | 55.000 | 447.0 |
| PF5400-D-H | 54 | 66.25 | 54.19 | 62.75 | 1.875 | 44 | 1.375 | 2.500 | 57.000 | 472.0 |
| PF6000-D-H | 60 | 73.00 | 60.19 | 69.25 | 1.875 | 52 | 1.500 | 2.750 | 63.000 | 604.0 |
| PF6600-D-H | 66 | 80.00 | 66.19 | 76.00 | 1.875 | 52 | 1.500 | 2.750 | 69.000 | 717.0 |
| PF7200-D-H | 72 | 86.50 | 72.19 | 82.50 | 1.875 | 60 | 1.500 | 2.750 | 75.000 | 801.0 |
| PF7800-D-H | 78 | 93.00 | 78.19 | 89.00 | 2.125 | 64 | 1.750 | 3.000 | 81.250 | 1009.0 |
| PF8400-D-H | 84 | 99.75 | 84.19 | 95.50 | 2.125 | 64 | 1.750 | 3.000 | 87.500 | 1158.0 |
| PF9000-D-H | 90 | 106.50 | 90.19 | 102.00 | 2.438 | 68 | 2.000 | 3.200 | 93.750 | 1430.0 |
| PF9600-D-H | 96 | 113.25 | 96.19 | 108.50 | 2.438 | 68 | 2.000 | 3.250 | 100.000 | 1625.0 |

Notes:

- a. Steel material conforms to the requirements of AWWA C207 specifications. Other material is available upon request.
- b. Meets ANSI class 150 pattern.

Pressure Ratings: 175psi (4" - 12") 150psi (14" and larger) at atmospheric temperature.

ALL DIMENSIONS ARE IN INCHES UNLESS OTHERWISE STATED.



AWWA Class “E” Steel Hub Ring Flange (275 psi)

| API Part Number | Size | O.D. | I.D. | Ø B.H.C. | Ø B.H. | # B.H. | THK | THK 2 | H.D. | Weight Lbs |
|-----------------|------|--------|-------|----------|--------|--------|-------|-------|---------|------------|
| PF0400-E-H | 4 | 9.00 | 4.57 | 7.50 | 0.750 | 8 | 0.938 | 1.312 | 5.312 | 12.2 |
| PF0500-E-H | 5 | 10.00 | 5.66 | 8.50 | 0.875 | 8 | 0.938 | 1.438 | 6.438 | 13.9 |
| PF0600-E-H | 6 | 11.00 | 6.72 | 9.50 | 0.875 | 8 | 1.000 | 1.562 | 7.562 | 17.0 |
| PF0800-E-H | 8 | 13.50 | 8.72 | 11.75 | 0.875 | 8 | 1.125 | 1.750 | 9.688 | 27.5 |
| PF1000-E-H | 10 | 16.00 | 10.88 | 14.25 | 1.000 | 12 | 1.188 | 1.938 | 12.000 | 37.4 |
| PF1200-E-H | 12 | 19.00 | 12.88 | 17.00 | 1.000 | 12 | 1.250 | 2.188 | 14.375 | 59.4 |
| PF1400-E-H | 14 | 21.00 | 14.19 | 18.75 | 1.125 | 12 | 1.375 | 2.250 | 15.750 | 77.7 |
| PF1600-E-H | 16 | 23.50 | 16.19 | 21.25 | 1.125 | 16 | 1.438 | 2.500 | 18.000 | 100.0 |
| PF1800-E-H | 18 | 25.00 | 18.19 | 22.75 | 1.250 | 16 | 1.562 | 2.688 | 19.875 | 109.0 |
| PF2000-E-H | 20 | 27.50 | 20.19 | 25.00 | 1.250 | 20 | 1.688 | 2.875 | 22.000 | 139.0 |
| PF2200-E-H | 22 | 29.50 | 22.19 | 27.25 | 1.375 | 20 | 1.812 | 3.125 | 24.000 | 161.0 |
| PF2400-E-H | 24 | 32.00 | 24.19 | 29.50 | 1.375 | 20 | 1.875 | 3.250 | 26.125 | 198.0 |
| PF2600-E-H | 26 | 34.25 | 26.19 | 31.75 | 1.375 | 24 | 2.000 | 3.375 | 28.500 | 235.0 |
| PF2800-E-H | 28 | 36.50 | 28.19 | 34.00 | 1.375 | 28 | 2.062 | 3.438 | 30.750 | 168.0 |
| PF3000-E-H | 30 | 38.75 | 30.19 | 36.00 | 1.375 | 28 | 2.125 | 3.530 | 32.750 | 303.0 |
| PF3200-E-H | 32 | 41.75 | 32.19 | 38.50 | 1.625 | 28 | 2.250 | 3.625 | 35.000 | 375.0 |
| PF3400-E-H | 34 | 43.75 | 34.19 | 40.50 | 1.625 | 32 | 2.312 | 3.688 | 37.000 | 400.0 |
| PF3600-E-H | 36 | 46.00 | 36.19 | 42.75 | 1.625 | 32 | 2.375 | 3.750 | 39.250 | 450.0 |
| PF3800-E-H | 38 | 48.75 | 38.19 | 45.25 | 1.625 | 32 | 2.375 | 3.750 | 41.750 | 527.0 |
| PF4000-E-H | 40 | 50.75 | 40.19 | 47.25 | 1.625 | 36 | 2.500 | 3.875 | 43.750 | 570.0 |
| PF4200-E-H | 42 | 53.00 | 42.19 | 49.50 | 1.625 | 36 | 2.625 | 4.000 | 46.000 | 650.0 |
| PF4400-E-H | 44 | 55.25 | 44.19 | 51.75 | 1.625 | 40 | 2.625 | 4.000 | 48.000 | 687.0 |
| PF4600-E-H | 46 | 57.25 | 46.19 | 53.75 | 1.625 | 40 | 2.688 | 4.062 | 50.000 | 732.0 |
| PF4800-E-H | 48 | 59.50 | 48.19 | 56.00 | 1.625 | 44 | 2.750 | 4.125 | 52.250 | 800.0 |
| PF5000-E-H | 50 | 61.75 | 50.19 | 58.25 | 1.875 | 44 | 2.750 | 4.125 | 54.250 | 826.0 |
| PF5200-E-H | 52 | 64.00 | 52.19 | 60.50 | 1.875 | 44 | 2.875 | 4.250 | 56.500 | 921.0 |
| PF5400-E-H | 54 | 66.25 | 54.19 | 62.75 | 1.875 | 44 | 3.000 | 4.375 | 58.750 | 1022.0 |
| PF6000-E-H | 60 | 73.00 | 60.19 | 69.25 | 1.875 | 52 | 3.125 | 4.500 | 65.250 | 1252.0 |
| PF6600-E-H | 66 | 80.00 | 66.19 | 76.00 | 1.875 | 52 | 3.375 | 4.875 | 71.500 | 1621.0 |
| PF7200-E-H | 72 | 86.50 | 72.19 | 82.50 | 1.875 | 60 | 3.500 | 5.000 | 78.500 | 1919.0 |
| PF7800-E-H | 78 | 93.00 | 78.19 | 89.00 | 2.125 | 64 | 3.875 | 5.375 | 84.500 | 2277.0 |
| PF8400-E-H | 84 | 99.75 | 84.19 | 95.50 | 2.125 | 64 | 3.875 | 5.375 | 90.500 | 2583.0 |
| PF9000-E-H | 90 | 106.50 | 90.19 | 102.00 | 2.438 | 68 | 4.250 | 5.750 | 96.750 | 3076.0 |
| PF9600-E-H | 96 | 113.25 | 96.19 | 108.50 | 2.438 | 68 | 4.250 | 5.750 | 102.750 | 3448.0 |

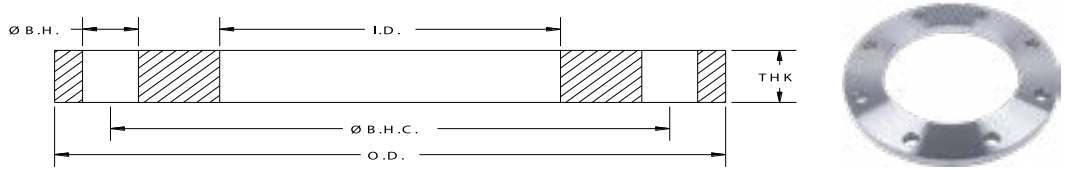
Notes:

a. Steel material conforms to the requirements of AWWA C207 specifications. Other material is available upon request.

b. Meets ANSI class 150 pattern.

Pressure Ratings: 275psi at atmospheric temperature.

ALL DIMENSIONS ARE IN INCHES UNLESS OTHERWISE STATED.



AWWA Class “B” Stainless Steel-Ring Flanges (86 psi)

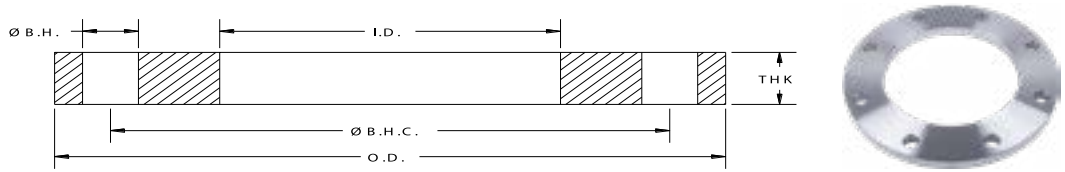
| API Part Number | Size | O.D. | I.D. | Ø B.H.C. | Ø B.H. | # B.H. | THK | Weight Lbs |
|-----------------|------|-------|-------|----------|--------|--------|-------|------------|
| SPF0200-B | 2 | 6.00 | 2.44 | 4.75 | 0.750 | 4 | 0.625 | 3.9 |
| SPF0250-B | 2.5 | 7.00 | 2.94 | 5.50 | 0.750 | 4 | 0.625 | 5.3 |
| SPF0300-B | 3 | 7.50 | 3.57 | 6.00 | 0.750 | 4 | 0.625 | 5.7 |
| SPF0400-B | 4 | 9.00 | 4.57 | 7.50 | 0.750 | 8 | 0.625 | 7.7 |
| SPF0500-B | 5 | 10.00 | 5.66 | 8.50 | 0.875 | 8 | 0.625 | 8.6 |
| SPF0600-B | 6 | 11.00 | 6.72 | 9.50 | 0.875 | 8 | 0.688 | 10.7 |
| SPF0800-B | 8 | 13.50 | 8.72 | 11.75 | 0.875 | 8 | 0.688 | 15.3 |
| SPF1000-B | 10 | 16.00 | 10.88 | 14.25 | 1.000 | 12 | 0.688 | 19.2 |
| SPF1200-B | 12 | 19.00 | 12.88 | 17.00 | 1.000 | 12 | 0.688 | 29.3 |
| SPF1400-B | 14 | 21.00 | 14.19 | 18.75 | 1.125 | 12 | 0.688 | 36.2 |
| SPF1600-B | 16 | 23.50 | 16.19 | 21.25 | 1.125 | 16 | 0.688 | 42.2 |
| SPF1800-B | 18 | 25.00 | 18.19 | 22.75 | 1.250 | 16 | 0.688 | 44.8 |
| SPF2000-B | 20 | 27.50 | 20.19 | 25.00 | 1.250 | 20 | 0.688 | 52.1 |
| SPF2200-B | 22 | 29.50 | 22.19 | 27.25 | 1.375 | 20 | 0.750 | 60.9 |
| SPF2400-B | 24 | 32.00 | 24.19 | 29.50 | 1.375 | 20 | 0.750 | 71.0 |
| SPF2600-B | 26 | 34.25 | 26.19 | 31.75 | 1.375 | 24 | 0.812 | 80.0 |
| SPF2800-B | 28 | 36.50 | 28.19 | 34.00 | 1.375 | 28 | 0.875 | 94.0 |
| SPF3000-B | 30 | 38.75 | 30.19 | 36.00 | 1.375 | 28 | 0.875 | 108.0 |
| SPF3200-B | 32 | 41.75 | 32.19 | 38.50 | 1.625 | 28 | 0.938 | 121.0 |
| SPF3400-B | 34 | 43.75 | 34.19 | 40.50 | 1.625 | 32 | 0.938 | 137.0 |
| SPF3600-B | 36 | 46.00 | 36.19 | 42.75 | 1.625 | 32 | 1.000 | 166.0 |
| SPF3800-B | 38 | 48.75 | 38.19 | 45.25 | 1.625 | 32 | 1.000 | 185.0 |
| SPF4000-B | 40 | 50.75 | 40.19 | 47.25 | 1.625 | 36 | 1.000 | 203.0 |
| SPF4200-B | 42 | 53.00 | 42.19 | 49.50 | 1.625 | 36 | 1.125 | 241.0 |
| SPF4400-B | 44 | 55.25 | 44.19 | 51.75 | 1.625 | 40 | 1.125 | 248.0 |
| SPF4600-B | 46 | 57.25 | 46.19 | 53.75 | 1.625 | 40 | 1.125 | 259.0 |
| SPF4800-B | 48 | 59.50 | 48.19 | 56.00 | 1.625 | 44 | 1.250 | 285.0 |
| SPF5000-B | 50 | 61.75 | 50.19 | 58.25 | 1.875 | 44 | 1.250 | 316.0 |
| SPF5200-B | 52 | 64.00 | 52.19 | 60.50 | 1.875 | 44 | 1.250 | 338.0 |
| SPF5400-B | 54 | 66.25 | 54.19 | 62.75 | 1.875 | 44 | 1.375 | 397.0 |
| SPF6000-B | 60 | 73.00 | 60.19 | 69.25 | 1.875 | 52 | 1.500 | 472.0 |

Notes:

- a. All Stainless Steel flanges available in Dual Grade 304/304L or 316/316L. Material conforms to the requirements of AWWA C228 specifications. Other material is available upon request.
- b. Meets ANSI class 150 pattern.
- c. For flanges in smaller sizes see page 4.3.

Pressure Ratings: 86psi at atmospheric temperature.

ALL DIMENSIONS ARE IN INCHES UNLESS OTHERWISE STATED.



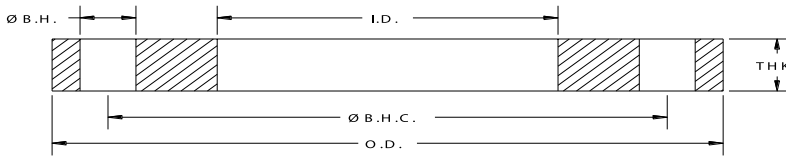
AWWA Class “D” Stainless Steel-Ring Flanges (150 - 175 psi)

| API Part Number | Size | O.D. | I.D. | Ø B.H.C. | Ø B.H. | # B.H. | THK | Weight Lbs |
|-----------------|------|-------|-------|----------|--------|--------|-------|------------|
| SPF0200-D | 2 | 6.00 | 2.44 | 4.75 | 0.750 | 4 | 0.625 | 3.9 |
| SPF0250-D | 2.5 | 7.00 | 2.94 | 5.50 | 0.750 | 4 | 0.625 | 5.3 |
| SPF0300-D | 3 | 7.50 | 3.57 | 6.00 | 0.750 | 4 | 0.625 | 5.7 |
| SPF0400-D | 4 | 9.00 | 4.57 | 7.50 | 0.750 | 8 | 0.625 | 8.1 |
| SPF0500-D | 5 | 10.00 | 5.66 | 8.50 | 0.875 | 8 | 0.625 | 9.1 |
| SPF0600-D | 6 | 11.00 | 6.72 | 9.50 | 0.875 | 8 | 0.688 | 10.7 |
| SPF0800-D | 8 | 13.50 | 8.72 | 11.75 | 0.875 | 8 | 0.688 | 15.7 |
| SPF1000-D | 10 | 16.00 | 10.88 | 14.25 | 1.000 | 12 | 0.688 | 19.3 |
| SPF1200-D | 12 | 19.00 | 12.88 | 17.00 | 1.000 | 12 | 0.812 | 33.9 |
| SPF1400-D | 14 | 21.00 | 14.19 | 18.75 | 1.125 | 12 | 0.938 | 47.3 |
| SPF1600-D | 16 | 23.50 | 16.19 | 21.25 | 1.125 | 16 | 1.000 | 60.8 |
| SPF1800-D | 18 | 25.00 | 18.19 | 22.75 | 1.250 | 16 | 1.062 | 65.2 |
| SPF2000-D | 20 | 27.50 | 20.19 | 25.00 | 1.250 | 20 | 1.125 | 81.2 |
| SPF2200-D | 22 | 29.50 | 22.19 | 27.25 | 1.375 | 20 | 1.188 | 90.8 |
| SPF2400-D | 24 | 32.00 | 24.19 | 29.50 | 1.375 | 20 | 1.250 | 112.0 |
| SPF2600-D | 26 | 34.25 | 26.19 | 31.75 | 1.375 | 24 | 1.312 | 132.0 |
| SPF2800-D | 28 | 36.50 | 28.19 | 34.00 | 1.375 | 28 | 1.312 | 148.0 |
| SPF3000-D | 30 | 38.75 | 30.19 | 36.00 | 1.375 | 28 | 1.375 | 169.0 |
| SPF3200-D | 32 | 41.75 | 32.19 | 38.50 | 1.625 | 28 | 1.500 | 211.0 |
| SPF3400-D | 34 | 43.75 | 34.19 | 40.50 | 1.625 | 32 | 1.500 | 219.0 |
| SPF3600-D | 36 | 46.00 | 36.19 | 42.75 | 1.625 | 32 | 1.625 | 265.0 |
| SPF3800-D | 38 | 48.75 | 38.19 | 45.25 | 1.625 | 32 | 1.625 | 300.0 |
| SPF4000-D | 40 | 50.75 | 40.19 | 47.25 | 1.625 | 36 | 1.625 | 311.0 |
| SPF4200-D | 42 | 53.00 | 42.19 | 49.50 | 1.625 | 36 | 1.750 | 362.0 |
| SPF4400-D | 44 | 55.25 | 44.19 | 51.75 | 1.625 | 40 | 1.750 | 385.0 |
| SPF4600-D | 46 | 57.25 | 46.19 | 53.75 | 1.625 | 40 | 1.750 | 404.0 |
| SPF4800-D | 48 | 59.50 | 48.19 | 56.00 | 1.625 | 44 | 1.875 | 457.0 |
| SPF5000-D | 50 | 61.75 | 50.19 | 58.25 | 1.875 | 44 | 2.000 | 505.0 |
| SPF5200-D | 52 | 64.00 | 52.19 | 60.50 | 1.875 | 44 | 2.000 | 539.0 |
| SPF5400-D | 54 | 66.25 | 54.19 | 62.75 | 1.875 | 44 | 2.125 | 611.0 |
| SPF6000-D | 60 | 73.00 | 60.19 | 69.25 | 1.875 | 52 | 2.250 | 760.0 |

Notes:

- a. All Stainless Steel flanges available in Dual Grade 304/304L or 316/316L. Material conforms to the requirements of AWWA C228 specifications. Other material is available upon request.
- b. Meets ANSI class 150 pattern.
- c. For flanges in smaller sizes see page 4.3.

Pressure Ratings: 175psi (4" - 12") and 150psi (14" and larger) at atmospheric temperature.



AWWA Class “E” Stainless Steel-Ring Flanges (275 psi)

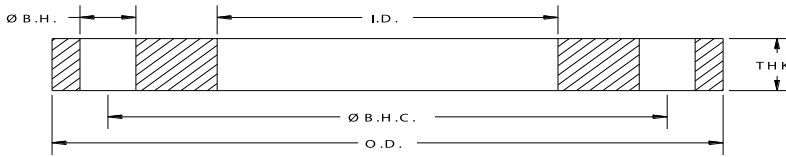
| API Part Number | Size | O.D. | I.D. | Ø B.H.C. | Ø B.H. | # B.H. | THK | Weight Lbs |
|-----------------|------|-------|-------|----------|--------|--------|-------|------------|
| SPF0200-E | 2 | 6.00 | 2.44 | 4.75 | 0.750 | 4 | 1.125 | 6.9 |
| SPF0250-E | 2.5 | 7.00 | 2.94 | 5.50 | 0.750 | 4 | 1.125 | 9.5 |
| SPF0300-E | 3 | 7.50 | 3.57 | 6.00 | 0.750 | 4 | 1.125 | 10.3 |
| SPF0400-E | 4 | 9.00 | 4.57 | 7.50 | 0.750 | 8 | 1.125 | 14.1 |
| SPF0500-E | 5 | 10.00 | 5.66 | 8.50 | 0.875 | 8 | 1.188 | 16.7 |
| SPF0600-E | 6 | 11.00 | 6.72 | 9.50 | 0.875 | 8 | 1.313 | 21.1 |
| SPF0800-E | 8 | 13.50 | 8.72 | 11.75 | 0.875 | 8 | 1.500 | 34.4 |
| SPF1000-E | 10 | 16.00 | 10.88 | 14.25 | 1.000 | 12 | 1.563 | 45.9 |
| SPF1200-E | 12 | 19.00 | 12.88 | 17.00 | 1.000 | 12 | 1.750 | 72.3 |
| SPF1400-E | 14 | 21.00 | 14.19 | 18.75 | 1.125 | 12 | 1.875 | 97.7 |
| SPF1600-E | 16 | 23.50 | 16.19 | 21.25 | 1.125 | 16 | 2.000 | 123.4 |
| SPF1800-E | 18 | 25.00 | 18.19 | 22.75 | 1.250 | 16 | 2.125 | 130.0 |
| SPF2000-E | 20 | 27.50 | 20.19 | 25.00 | 1.250 | 20 | 2.375 | 171.0 |
| SPF2200-E | 22 | 29.50 | 22.19 | 27.25 | 1.375 | 20 | 2.500 | 189.0 |
| SPF2400-E | 24 | 32.00 | 24.19 | 29.50 | 1.375 | 20 | 2.625 | 234.0 |
| SPF2600-E | 26 | 34.25 | 26.19 | 31.75 | 1.375 | 24 | 2.750 | 270.0 |
| SPF2800-E | 28 | 36.50 | 28.19 | 34.00 | 1.375 | 28 | 2.750 | 296.0 |
| SPF3000-E | 30 | 38.75 | 30.19 | 36.00 | 1.375 | 28 | 2.875 | 350.0 |
| SPF3200-E | 32 | 41.75 | 32.19 | 38.50 | 1.625 | 28 | 3.000 | 396.0 |
| SPF3400-E | 34 | 43.75 | 34.19 | 40.50 | 1.625 | 32 | 3.000 | 440.0 |
| SPF3600-E | 36 | 46.00 | 36.19 | 42.75 | 1.625 | 32 | 3.125 | 511.0 |
| SPF3800-E | 38 | 48.75 | 38.19 | 45.25 | 1.625 | 32 | 3.125 | 579.0 |
| SPF4000-E | 40 | 50.75 | 40.19 | 47.25 | 1.625 | 36 | 3.250 | 625.0 |
| SPF4200-E | 42 | 53.00 | 42.19 | 49.50 | 1.625 | 36 | 3.375 | 689.0 |
| SPF4400-E | 44 | 55.25 | 44.19 | 51.75 | 1.625 | 40 | 3.375 | 746.0 |
| SPF4600-E | 46 | 57.25 | 46.19 | 53.75 | 1.625 | 40 | 3.438 | 799.0 |
| SPF4800-E | 48 | 59.50 | 48.19 | 56.00 | 1.625 | 44 | 3.500 | 857.0 |
| SPF5000-E | 50 | 61.75 | 50.19 | 58.25 | 1.875 | 44 | 3.500 | 886.0 |
| SPF5200-E | 52 | 64.00 | 52.19 | 60.50 | 1.875 | 44 | 3.625 | 992.0 |
| SPF5400-E | 54 | 66.25 | 54.19 | 62.75 | 1.875 | 44 | 3.750 | 1082.0 |
| SPF6000-E | 60 | 73.00 | 60.19 | 69.25 | 1.875 | 52 | 3.875 | 1312.0 |
| SPF6600-E | 66 | 80.00 | 66.19 | 76.00 | 1.875 | 52 | 4.250 | 1735.0 |
| SPF7200-E | 72 | 86.50 | 72.19 | 82.50 | 1.875 | 60 | 4.375 | 2004.0 |

Notes:

- a. All Stainless Steel flanges available in Dual Grade 304/304L or 316/316L. Material conforms to the requirements of AWWA C228 specifications. Other material is available upon request.
- b. Meets ANSI class 150 pattern.
- c. For flanges in smaller sizes see page 4.3.

Pressure Ratings: 275psi at atmospheric temperature.

ALL DIMENSIONS ARE IN INCHES UNLESS OTHERWISE STATED.



AWWA Class “F” Stainless Steel-Ring Flanges (300 psi)

| API Part Number | Size | O.D. | I.D. | Ø B.H.C. | Ø B.H. | # B.H. | THK | Weight Lbs |
|-----------------|------|-------|-------|----------|--------|--------|-------|------------|
| SPF0400-F | 4 | 10.00 | 4.57 | 7.88 | 0.875 | 8 | 1.130 | 18.4 |
| SPF0500-F | 5 | 11.00 | 5.66 | 9.25 | 0.875 | 8 | 1.210 | 22.3 |
| SPF0600-F | 6 | 12.50 | 6.72 | 10.62 | 0.875 | 12 | 1.310 | 29.7 |
| SPF0800-F | 8 | 15.00 | 8.72 | 13.00 | 1.000 | 12 | 1.310 | 39.9 |
| SPF1000-F | 10 | 17.50 | 10.88 | 15.25 | 1.125 | 16 | 1.500 | 56.0 |
| SPF1200-F | 12 | 20.50 | 12.88 | 17.75 | 1.250 | 16 | 1.630 | 84.9 |
| SPF1400-F | 14 | 23.00 | 14.19 | 20.25 | 1.250 | 20 | 1.940 | 127.0 |
| SPF1600-F | 16 | 25.50 | 16.19 | 22.50 | 1.375 | 20 | 2.140 | 166.0 |
| SPF1800-F | 18 | 28.00 | 18.19 | 24.75 | 1.375 | 24 | 2.250 | 205.0 |
| SPF2000-F | 20 | 30.50 | 20.19 | 27.00 | 1.375 | 24 | 2.330 | 247.0 |
| SPF2200-F | 22 | 33.00 | 22.19 | 29.25 | 1.375 | 24 | 2.500 | 307.0 |
| SPF2400-F | 24 | 36.00 | 24.19 | 32.00 | 1.625 | 24 | 2.690 | 388.0 |
| SPF2600-F | 26 | 38.25 | 26.25 | 34.50 | 1.875 | 28 | 3.000 | 450.0 |
| SPF2800-F | 28 | 40.75 | 28.25 | 37.00 | 1.875 | 28 | 3.130 | 532.0 |
| SPF3000-F | 30 | 43.00 | 30.25 | 39.25 | 1.875 | 28 | 3.150 | 585.0 |
| SPF3200-F | 32 | 45.25 | 32.25 | 41.50 | 1.875 | 28 | 3.250 | 657.0 |
| SPF3400-F | 34 | 47.50 | 34.25 | 43.50 | 1.875 | 28 | 3.380 | 740.0 |
| SPF3600-F | 36 | 50.00 | 36.25 | 46.00 | 2.125 | 32 | 3.460 | 801.0 |
| SPF3800-F | 38 | 52.25 | 38.25 | 48.00 | 2.125 | 32 | 3.500 | 873.0 |
| SPF4000-F | 40 | 54.25 | 40.25 | 50.25 | 2.125 | 36 | 3.630 | 936.0 |
| SPF4200-F | 42 | 57.00 | 42.25 | 52.75 | 2.125 | 36 | 3.810 | 1102.0 |
| SPF4400-F | 44 | 59.25 | 44.25 | 55.00 | 2.125 | 36 | 4.000 | 1236.0 |
| SPF4600-F | 46 | 61.50 | 46.25 | 57.25 | 2.125 | 40 | 4.130 | 1343.0 |
| SPF4800-F | 48 | 65.00 | 48.25 | 60.75 | 2.125 | 40 | 4.500 | 1717.0 |

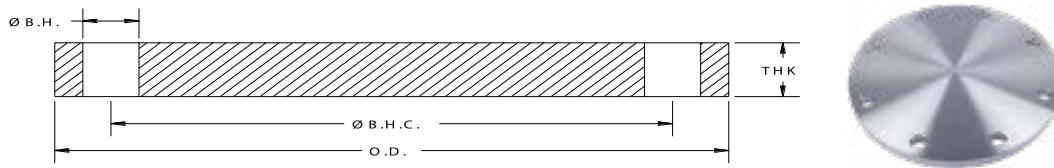
Notes:

a. All Stainless Steel flanges available in Dual Grade 304/304L or 316/316L. Material conforms to the requirements of AWWA C228 specifications. Other material is available upon request.

b. Meets ANSI class 300 pattern.

Pressure Ratings: 300 psi at atmospheric temperature.

ALL DIMENSIONS ARE IN INCHES UNLESS OTHERWISE STATED.



AWWA Class “B” Stainless Steel Blind Flanges (86 psi)

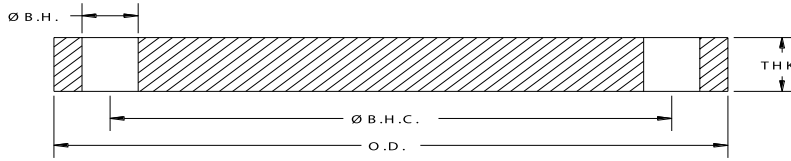
| API Part Number | Size | O.D. | I.D. | Ø B.H.C. | Ø B.H. | # B.H. | THK | Weight Lbs |
|-----------------|------|-------|-------|----------|--------|--------|-------|------------|
| SPFBL0400-B | 4 | 9.00 | BLIND | 7.50 | 0.750 | 8 | 0.625 | 11.0 |
| SPFBL0500-B | 5 | 10.00 | BLIND | 8.50 | 0.875 | 8 | 0.625 | 13.0 |
| SPFBL0600-B | 6 | 11.00 | BLIND | 9.50 | 0.875 | 8 | 0.688 | 18.0 |
| SPFBL0800-B | 8 | 13.50 | BLIND | 11.75 | 0.875 | 8 | 0.688 | 27.0 |
| SPFBL1000-B | 10 | 16.00 | BLIND | 14.25 | 1.000 | 12 | 0.688 | 38.0 |
| SPFBL1200-B | 12 | 19.00 | BLIND | 17.00 | 1.000 | 12 | 0.719 | 56.0 |
| SPFBL1400-B | 14 | 21.00 | BLIND | 18.75 | 1.125 | 12 | 0.791 | 75.0 |
| SPFBL1600-B | 16 | 23.50 | BLIND | 21.25 | 1.125 | 16 | 0.892 | 105.0 |
| SPFBL1800-B | 18 | 25.00 | BLIND | 22.75 | 1.250 | 16 | 0.950 | 126.0 |
| SPFBL2000-B | 20 | 27.50 | BLIND | 25.00 | 1.250 | 20 | 1.040 | 167.0 |
| SPFBL2200-B | 22 | 29.50 | BLIND | 27.25 | 1.375 | 20 | 1.132 | 209.0 |
| SPFBL2400-B | 24 | 32.00 | BLIND | 29.50 | 1.375 | 20 | 1.216 | 267.0 |
| SPFBL2600-B | 26 | 34.25 | BLIND | 31.75 | 1.375 | 24 | 1.307 | 327.0 |
| SPFBL2800-B | 28 | 36.50 | BLIND | 34.00 | 1.375 | 28 | 1.398 | 397.0 |
| SPFBL3000-B | 30 | 38.75 | BLIND | 36.00 | 1.375 | 28 | 1.477 | 475.0 |
| SPFBL3200-B | 32 | 41.75 | BLIND | 38.50 | 1.625 | 28 | 1.581 | 586.0 |
| SPFBL3400-B | 34 | 43.75 | BLIND | 40.50 | 1.625 | 32 | 1.661 | 675.0 |
| SPFBL3600-B | 36 | 46.00 | BLIND | 42.75 | 1.625 | 32 | 1.751 | 790.0 |
| SPFBL3800-B | 38 | 48.75 | BLIND | 45.25 | 1.625 | 32 | 1.853 | 944.0 |
| SPFBL4000-B | 40 | 50.75 | BLIND | 47.25 | 1.625 | 36 | 1.933 | 1066.0 |
| SPFBL4200-B | 42 | 53.00 | BLIND | 49.50 | 1.625 | 36 | 2.023 | 1220.0 |
| SPFBL4400-B | 44 | 55.25 | BLIND | 51.75 | 1.625 | 40 | 2.114 | 1385.0 |
| SPFBL4600-B | 46 | 57.25 | BLIND | 53.75 | 1.625 | 40 | 2.194 | 1547.0 |
| SPFBL4800-B | 48 | 59.50 | BLIND | 56.00 | 1.625 | 44 | 2.285 | 1739.0 |
| SPFBL5000-B | 50 | 61.75 | BLIND | 58.25 | 1.875 | 44 | 2.377 | 1934.0 |
| SPFBL5200-B | 52 | 64.00 | BLIND | 60.50 | 1.875 | 44 | 2.468 | 2163.0 |
| SPFBL5400-B | 54 | 66.25 | BLIND | 62.75 | 1.875 | 44 | 2.559 | 2408.0 |
| SPFBL6000-B | 60 | 73.00 | BLIND | 69.25 | 1.875 | 52 | 2.820 | 3225.0 |
| SPFBL6600-B | 66 | 80.00 | BLIND | 76.00 | 1.875 | 52 | 3.092 | 4272.0 |
| SPFBL7200-B | 72 | 86.50 | BLIND | 82.50 | 1.875 | 60 | 3.353 | 5418.0 |

Notes:

- a. All Stainless Steel flanges available in Dual Grade 304/304L or 316/316L. Material conforms to the requirements of AWWA C228 specifications. Other material is available upon request.
- b. Meets ANSI class 150 pattern.
- c. AWWA recommends the use of Dish Assemblies for sizes above 72". Call API customer service for additional information.

Pressure Ratings: 86psi at atmospheric temperature.

ALL DIMENSIONS ARE IN INCHES UNLESS OTHERWISE STATED.



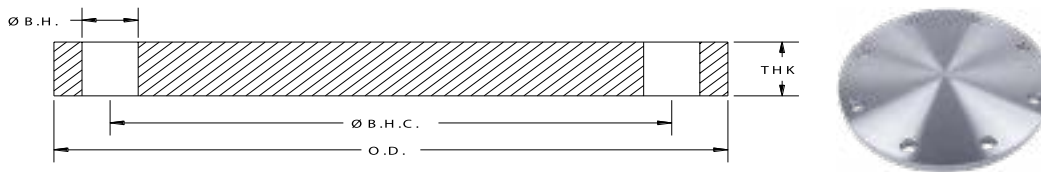
AWWA Class “D” Stainless Steel Blind Flanges - 1986 Spec’s

| API Part Number | Size | O.D. | I.D. | Ø B.H.C. | Ø B.H. | # B.H. | THK | Weight Lbs |
|-----------------|------|-------|-------|----------|--------|--------|-------|------------|
| SPFBL0400-86 | 4 | 9.00 | BLIND | 7.50 | 0.750 | 8 | 0.625 | 11.0 |
| SPFBL0500-86 | 5 | 10.00 | BLIND | 8.50 | 0.875 | 8 | 0.625 | 13.0 |
| SPFBL0600-86 | 6 | 11.00 | BLIND | 9.50 | 0.875 | 8 | 0.688 | 18.0 |
| SPFBL0800-86 | 8 | 13.50 | BLIND | 11.75 | 0.875 | 8 | 0.688 | 27.0 |
| SPFBL1000-86 | 10 | 16.00 | BLIND | 14.25 | 1.000 | 12 | 0.688 | 38.0 |
| SPFBL1200-86 | 12 | 19.00 | BLIND | 17.00 | 1.000 | 12 | 0.813 | 64.0 |
| SPFBL1400-86 | 14 | 21.00 | BLIND | 18.75 | 1.125 | 12 | 0.938 | 88.0 |
| SPFBL1600-86 | 16 | 23.50 | BLIND | 21.25 | 1.125 | 16 | 1.000 | 118.0 |
| SPFBL1800-86 | 18 | 25.00 | BLIND | 22.75 | 1.250 | 16 | 1.063 | 141.0 |
| SPFBL2000-86 | 20 | 27.50 | BLIND | 25.00 | 1.250 | 20 | 1.125 | 181.0 |
| SPFBL2400-86 | 24 | 32.00 | BLIND | 29.50 | 1.375 | 20 | 1.250 | 273.0 |
| SPFBL3000-86 | 30 | 38.75 | BLIND | 36.00 | 1.375 | 28 | 1.375 | 436.0 |
| SPFBL3600-86 | 36 | 46.00 | BLIND | 42.75 | 1.625 | 32 | 1.625 | 735.0 |
| SPFBL4200-86 | 42 | 53.00 | BLIND | 49.50 | 1.625 | 36 | 1.750 | 1057.0 |
| SPFBL4800-86 | 48 | 59.50 | BLIND | 56.00 | 1.625 | 44 | 1.875 | 1428.0 |
| SPFBL6000-86 | 60 | 73.00 | BLIND | 69.25 | 1.875 | 52 | 2.250 | 2574.0 |

Notes:

- a. All Stainless Steel flanges available in Dual Grade 304/304L or 316/316L. Material conforms to the requirements of AWWA C228 specifications. Other material is available upon request.
- b. Meets ANSI class 150 pattern.
- c. Manufactured to AWWA C207-1986 dimensional specifications.
- d. AWWA recommends the use of Dish Assemblies for sizes above 72". Call API customer service for additional information.

ALL DIMENSIONS ARE IN INCHES UNLESS OTHERWISE STATED.



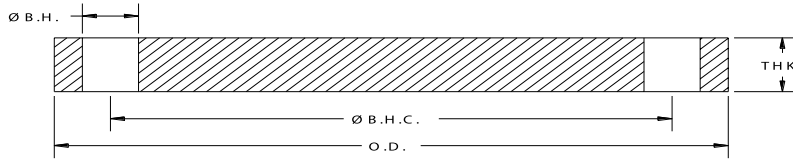
AWWA Class “D” Stainless Steel Blind Flanges (150-175 psi)

| API Part Number | Size | O.D. | I.D. | Ø B.H.C. | Ø B.H. | # B.H. | THK | Weight Lbs |
|-----------------|------|-------|-------|----------|--------|--------|-------|------------|
| SPFBL0400-D | 4 | 9.00 | BLIND | 7.50 | 0.750 | 8 | 0.625 | 11.0 |
| SPFBL0500-D | 5 | 10.00 | BLIND | 8.50 | 0.875 | 8 | 0.650 | 13.0 |
| SPFBL0600-D | 6 | 11.00 | BLIND | 9.50 | 0.875 | 8 | 0.693 | 18.0 |
| SPFBL0800-D | 8 | 13.50 | BLIND | 11.75 | 0.875 | 8 | 0.813 | 31.0 |
| SPFBL1000-D | 10 | 16.00 | BLIND | 14.25 | 1.000 | 12 | 0.953 | 52.0 |
| SPFBL1200-D | 12 | 19.00 | BLIND | 17.00 | 1.000 | 12 | 1.117 | 87.0 |
| SPFBL1400-D | 14 | 21.00 | BLIND | 18.75 | 1.125 | 12 | 1.133 | 107.0 |
| SPFBL1600-D | 16 | 23.50 | BLIND | 21.25 | 1.125 | 16 | 1.265 | 150.0 |
| SPFBL1800-D | 18 | 25.00 | BLIND | 22.75 | 1.250 | 16 | 1.331 | 178.0 |
| SPFBL2000-D | 20 | 27.50 | BLIND | 25.00 | 1.250 | 20 | 1.448 | 234.0 |
| SPFBL2200-D | 22 | 29.50 | BLIND | 27.25 | 1.375 | 20 | 1.568 | 290.0 |
| SPFBL2400-D | 24 | 32.00 | BLIND | 29.50 | 1.375 | 20 | 1.661 | 365.0 |
| SPFBL2600-D | 26 | 34.25 | BLIND | 31.75 | 1.375 | 24 | 1.786 | 447.0 |
| SPFBL2800-D | 28 | 36.50 | BLIND | 34.00 | 1.375 | 28 | 1.906 | 542.0 |
| SPFBL3000-D | 30 | 38.75 | BLIND | 36.00 | 1.375 | 28 | 2.008 | 647.0 |
| SPFBL3200-D | 32 | 41.75 | BLIND | 38.50 | 1.625 | 28 | 2.150 | 798.0 |
| SPFBL3400-D | 34 | 43.75 | BLIND | 40.50 | 1.625 | 32 | 2.252 | 916.0 |
| SPFBL3600-D | 36 | 46.00 | BLIND | 42.75 | 1.625 | 32 | 2.370 | 1071.0 |
| SPFBL3800-D | 38 | 48.75 | BLIND | 45.25 | 1.625 | 32 | 2.506 | 1277.0 |
| SPFBL4000-D | 40 | 50.75 | BLIND | 47.25 | 1.625 | 36 | 2.609 | 1439.0 |
| SPFBL4200-D | 42 | 53.00 | BLIND | 49.50 | 1.625 | 36 | 2.729 | 1648.0 |
| SPFBL4400-D | 44 | 55.25 | BLIND | 51.75 | 1.625 | 40 | 2.849 | 1867.0 |
| SPFBL4600-D | 46 | 57.25 | BLIND | 53.75 | 1.625 | 40 | 2.952 | 2082.0 |
| SPFBL4800-D | 48 | 59.50 | BLIND | 56.00 | 1.625 | 44 | 3.072 | 2340.0 |
| SPFBL5000-D | 50 | 61.75 | BLIND | 58.25 | 1.875 | 44 | 3.196 | 2600.0 |
| SPFBL5200-D | 52 | 64.00 | BLIND | 60.50 | 1.875 | 44 | 3.315 | 2906.0 |
| SPFBL5400-D | 54 | 66.25 | BLIND | 62.75 | 1.875 | 44 | 3.435 | 3235.0 |
| SPFBL6000-D | 60 | 73.00 | BLIND | 69.25 | 1.875 | 52 | 3.779 | 4328.0 |
| SPFBL6600-D | 66 | 80.00 | BLIND | 76.00 | 1.875 | 52 | 4.136 | 5719.0 |

Notes:

- a. All Stainless Steel flanges available in Dual Grade 304/304L or 316/316L. Material conforms to the requirements of AWWA C228 specifications. Other material is available upon request.
- b. Meets ANSI class 150 pattern.
- c. AWWA recommends the use of Dish Assemblies for sizes above 72". Call API customer service for additional information.

ALL DIMENSIONS ARE IN INCHES UNLESS OTHERWISE STATED.



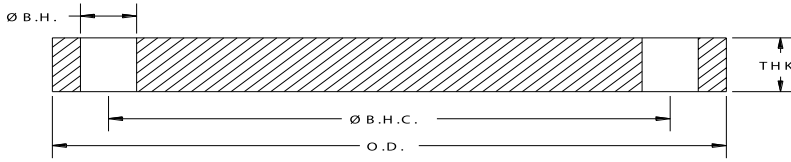
AWWA Class “E” Stainless Steel Blind Flanges

| API Part Number | Size | O.D. | I.D. | Ø B.H.C. | Ø B.H. | # B.H. | THK | Weight Lbs |
|-----------------|------|-------|-------|----------|--------|--------|-------|------------|
| SPFBL0400-E | 4 | 9.00 | BLIND | 7.50 | 0.750 | 8 | 1.125 | 19.0 |
| SPFBL0500-E | 5 | 10.00 | BLIND | 8.50 | 0.875 | 8 | 1.188 | 24.0 |
| SPFBL0600-E | 6 | 11.00 | BLIND | 9.50 | 0.875 | 8 | 1.313 | 33.0 |
| SPFBL0800-E | 8 | 13.50 | BLIND | 11.75 | 0.875 | 8 | 1.500 | 58.0 |
| SPFBL1000-E | 10 | 16.00 | BLIND | 14.25 | 1.000 | 12 | 1.563 | 84.0 |
| SPFBL1200-E | 12 | 19.00 | BLIND | 17.00 | 1.000 | 12 | 1.750 | 135.0 |
| SPFBL1400-E | 14 | 21.00 | BLIND | 18.75 | 1.125 | 12 | 1.875 | 176.0 |
| SPFBL1600-E | 16 | 23.50 | BLIND | 21.25 | 1.125 | 16 | 2.000 | 234.0 |
| SPFBL1800-E | 18 | 25.00 | BLIND | 22.75 | 1.250 | 16 | 2.125 | 283.0 |
| SPFBL2000-E | 20 | 27.50 | BLIND | 25.00 | 1.250 | 20 | 2.375 | 382.0 |
| SPFBL2200-E | 22 | 29.50 | BLIND | 27.25 | 1.375 | 20 | 2.500 | 462.0 |
| SPFBL2400-E | 24 | 32.00 | BLIND | 29.50 | 1.375 | 20 | 2.625 | 575.0 |
| SPFBL2600-E | 26 | 34.25 | BLIND | 31.75 | 1.375 | 24 | 2.750 | 689.0 |
| SPFBL2800-E | 28 | 36.50 | BLIND | 34.00 | 1.375 | 28 | 2.750 | 782.0 |
| SPFBL3000-E | 30 | 38.75 | BLIND | 36.00 | 1.375 | 28 | 2.875 | 926.0 |
| SPFBL3200-E | 32 | 41.75 | BLIND | 38.50 | 1.625 | 28 | 3.000 | 1113.0 |
| SPFBL3400-E | 34 | 43.75 | BLIND | 40.50 | 1.625 | 32 | 3.050 | 1241.0 |
| SPFBL3600-E | 36 | 46.00 | BLIND | 42.75 | 1.625 | 32 | 3.209 | 1450.0 |
| SPFBL3800-E | 38 | 48.75 | BLIND | 45.25 | 1.625 | 32 | 3.394 | 1730.0 |
| SPFBL4000-E | 40 | 50.75 | BLIND | 47.25 | 1.625 | 36 | 3.533 | 1949.0 |
| SPFBL4200-E | 42 | 53.00 | BLIND | 49.50 | 1.625 | 36 | 3.695 | 2230.0 |
| SPFBL4400-E | 44 | 55.25 | BLIND | 51.75 | 1.625 | 40 | 3.857 | 2528.0 |
| SPFBL4600-E | 46 | 57.25 | BLIND | 53.75 | 1.625 | 40 | 3.997 | 2819.0 |
| SPFBL4800-E | 48 | 59.50 | BLIND | 56.00 | 1.625 | 44 | 4.159 | 3167.0 |
| SPFBL5000-E | 50 | 61.75 | BLIND | 58.25 | 1.875 | 44 | 4.327 | 3520.0 |
| SPFBL5200-E | 52 | 64.00 | BLIND | 60.50 | 1.875 | 44 | 4.489 | 3935.0 |
| SPFBL5400-E | 54 | 66.25 | BLIND | 62.75 | 1.875 | 44 | 4.651 | 4380.0 |
| SPFBL6000-E | 60 | 73.00 | BLIND | 69.25 | 1.875 | 52 | 5.116 | 5855.0 |
| SPFBL6600-E | 66 | 80.00 | BLIND | 76.00 | 1.875 | 52 | 5.601 | 7745.0 |
| SPFBL7200-E | 72 | 86.50 | BLIND | 82.50 | 1.875 | 60 | 6.066 | 9810.0 |

Notes:

- a. All Stainless Steel flanges available in Dual Grade 304/304L or 316/316L. Material conforms to the requirements of AWWA C228 specifications. Other material is available upon request.
- b. Meets ANSI class 150 pattern.
- c. AWWA recommends the use of Dish Assemblies for sizes above 72". Call API customer service for additional information.

ALL DIMENSIONS ARE IN INCHES UNLESS OTHERWISE STATED.



AWWA Class “F” Stainless Steel Blind Flanges (300 psi)

| API Part Number | Size | O.D. | I.D. | Ø B.H.C. | Ø B.H. | # B.H. | THK | Weight Lbs |
|-----------------|------|-------|-------|----------|--------|--------|-------|------------|
| SPFBL0400-F | 4 | 10.00 | BLIND | 7.88 | 0.875 | 8 | 1.130 | 23.0 |
| SPFBL0500-F | 5 | 11.00 | BLIND | 9.25 | 0.875 | 8 | 1.210 | 31.0 |
| SPFBL0600-F | 6 | 12.50 | BLIND | 10.62 | 0.875 | 12 | 1.310 | 43.0 |
| SPFBL0800-F | 8 | 15.00 | BLIND | 13.00 | 1.000 | 12 | 1.310 | 62.0 |
| SPFBL1000-F | 10 | 17.50 | BLIND | 15.25 | 1.125 | 16 | 1.500 | 96.0 |
| SPFBL1200-F | 12 | 20.50 | BLIND | 17.75 | 1.250 | 16 | 1.630 | 143.0 |
| SPFBL1400-F | 14 | 23.00 | BLIND | 20.25 | 1.250 | 20 | 1.940 | 214.0 |
| SPFBL1600-F | 16 | 25.50 | BLIND | 22.50 | 1.375 | 20 | 2.140 | 291.0 |
| SPFBL1800-F | 18 | 28.00 | BLIND | 24.75 | 1.375 | 24 | 2.250 | 369.0 |
| SPFBL2000-F | 20 | 30.50 | BLIND | 27.00 | 1.375 | 24 | 2.330 | 458.0 |
| SPFBL2200-F | 22 | 33.00 | BLIND | 29.25 | 1.375 | 24 | 2.500 | 580.0 |
| SPFBL2400-F | 24 | 36.00 | BLIND | 32.00 | 1.625 | 24 | 2.690 | 737.0 |
| SPFBL2600-F | 26 | 38.25 | BLIND | 34.50 | 1.875 | 28 | 3.000 | 910.0 |
| SPFBL2800-F | 28 | 40.75 | BLIND | 37.00 | 1.875 | 28 | 3.130 | 1087.0 |
| SPFBL3000-F | 30 | 43.00 | BLIND | 39.25 | 1.875 | 28 | 3.166 | 1232.0 |
| SPFBL3200-F | 32 | 45.25 | BLIND | 41.50 | 1.875 | 28 | 3.332 | 1444.0 |
| SPFBL3400-F | 34 | 47.50 | BLIND | 43.50 | 1.875 | 28 | 3.475 | 1667.0 |
| SPFBL3600-F | 36 | 50.00 | BLIND | 46.00 | 2.125 | 32 | 3.671 | 1923.0 |
| SPFBL3800-F | 38 | 52.25 | BLIND | 48.00 | 2.125 | 32 | 3.815 | 2193.0 |
| SPFBL4000-F | 40 | 54.25 | BLIND | 50.25 | 2.125 | 36 | 3.982 | 2462.0 |
| SPFBL4200-F | 42 | 57.00 | BLIND | 52.75 | 2.125 | 36 | 4.171 | 2863.0 |
| SPFBL4400-F | 44 | 59.25 | BLIND | 55.00 | 2.125 | 36 | 4.338 | 3230.0 |
| SPFBL4600-F | 46 | 61.50 | BLIND | 57.25 | 2.125 | 40 | 4.505 | 3608.0 |
| SPFBL4800-F | 48 | 65.00 | BLIND | 60.75 | 2.125 | 40 | 4.781 | 4300.0 |

Notes:

a. All Stainless Steel flanges available in Dual Grade 304/304L or 316/316L. Material conforms to the requirements of AWWA C228 specifications. Other material is available upon request.

b. Meets ANSI class 300 pattern.

Pressure Ratings: 300psi at atmospheric temperature.

ALL DIMENSIONS ARE IN INCHES UNLESS OTHERWISE STATED.