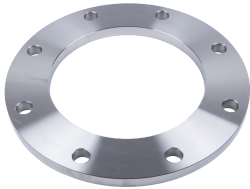


VISIT APIINT.COM FOR MORE INFORMATION.

YOUR SOURCE FOR PIPE FITTINGS & CUSTOM SOLUTIONS



FLANGES

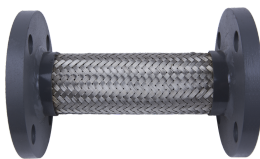
Meet wide variety of standards (ANSI, ASTM, AWWA, BS, DIN and JIS)

Broad range of types, sizes, materials (100% Domestic, Buy America & Imported) and accessories, like gaskets and flange adapters



FITTINGS & ACCESSORIES

Large inventory of grooved fittings (KLAMPz), threaded couplings, pipe nipples, elbows, pump motor brackets, rain caps and weld cones



PUMP CONNECTORS

Flanged and threaded pump connectors



VALVES

Variety of gear and lever operated butterfly valves, check valves and pressure relief valves, including accessories like valve extensions



EXPANSION JOINTS

Multiple sizes of flanged and union expansion joints, along with accessories like control units and split retaining rings

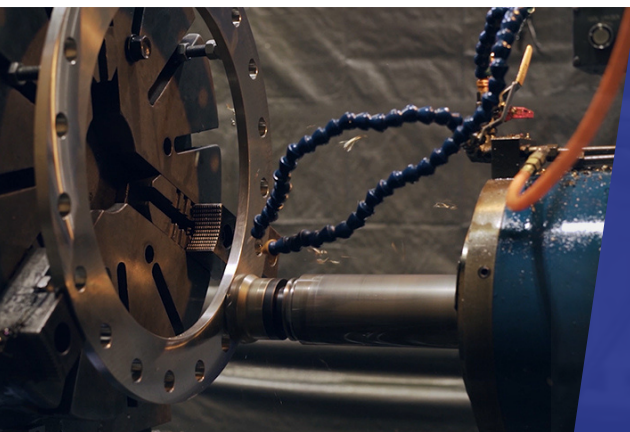


CUSTOM PARTS

Diverse selection of custom parts and assemblies manufactured and stocked for OEM Manufacturers in the Agriculture, Exhaust, HVAC & Water Works markets

MACHINING & MANUFACTURING

- Experience with a wide variety of products, sizes, materials and specifications utilizing Buy America, AIS or Import materials.
- Short lead times that allow you to get products to customers when they need them.
- Support fast turn modifications to stock items.
- Quality control technicians verify that all products meet customer requirements.

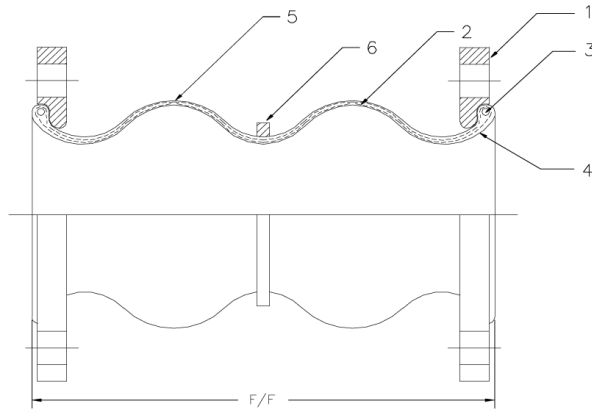


EXPANSION JOINTS

Suitable for suction and delivery applications, Single-Sphere Molded Rubber Expansion Joints reduce noise and vibrations. These molded rubber expansion joints can absorb motion and reduce stress. They come with ANSI Class #150 drilled flanges and can be customized with ANSI Class #300 and DIN-rated flanges.

FEATURES

- Applicable for suction and delivery (discharge).
- Provides sound and vibration isolation.
- Gaskets and packing are not required.
- Floating flanges allow for easy installation.
- Prevents piping system and equipment breakdown by absorbing elongation and contraction caused by temperature variances.
- Absorbs water pulsation and minimizes water hammering.



API Part Number	Size in	Face to Face Dimensions in	Ø B.H.C.		Allowable Motion Ratings*				Installation Tolerances			
			PN 10 in	PN 16 in	Compression	Elongation	Lateral	Angular	Compression	Elongation	Lateral	Angular
(S)AMS0100	1	6	3.1		0.50	0.38	0.50	15°	0.19	0.13	0.25	5°
(S)AMS0150	1.5	6	4.3		0.50	0.38	0.50	15°	0.19	0.13	0.25	5°
(S)AMS0200	2	6	4.9		0.50	0.38	0.50	15°	0.19	0.13	0.25	5°
(S)AMS0250	2.5	6	5.7		0.50	0.38	0.50	15°	0.19	0.13	0.25	5°
(S)AMS0300	3	6	6.3		0.50	0.38	0.50	15°	0.19	0.13	0.25	5°
(S)AMS0400	4	6	7.1		0.63	0.38	0.50	15°	0.19	0.13	0.25	5°
(S)AMS0500	5	6	8.3		0.63	0.38	0.50	15°	0.19	0.13	0.25	5°
(S)AMS0600	6	6	9.5		0.63	0.38	0.50	15°	0.19	0.13	0.25	5°
(S)AMS0800	8	6	11.6	12.0	0.63	0.38	0.50	15°	0.19	0.13	0.25	5°
(S)AMS1000	10	8	13.8	14.0	0.63	0.50	0.75	15°	0.19	0.13	0.25	5°
(S)AMS1200	12	8	15.8	16.0	0.75	0.50	0.75	15°	0.19	0.13	0.25	5°
(S)AMS1400	14	8	18.1	19.0	0.75	0.50	0.75	15°	0.19	0.13	0.25	5°
(S)AMS1600	16	8	20.3	21.0	0.75	0.50	0.75	15°	0.19	0.13	0.25	5°
(S)AMS1800	18	8	22.2	23.0	0.75	0.50	0.75	15°	0.19	0.13	0.25	5°
(S)AMS2000	20	8	24.4	26.0	0.75	0.50	0.75	15°	0.19	0.13	0.25	5°
(S)AMS2400	24	10	28.5	30.0	0.75	0.50	0.75	15°	0.19	0.13	0.25	5°

Warning: Do not elongate rubber expansion joints when installing for suction service.

*** - Non Concurrent Ratings.

APPLICATIONS

- Pumps & air compressors in air conditioning system & sanitary equipment.
- Refrigeration systems and blowers in industrial plant equipment.
- Feed-water and drainage equipment in marine piping systems.
- Applicable for use in power generation and chemical plants.
- Marine applications

OPERATING CONDITIONS

Part Number Selection	1" - 12"	14" - 24"
Operating Pressure	up to 214 psi	up to 214 psi
Operating Temp Range*	14°- 170°F (Neoprene) 1 4°- 170°F (Nitrile) 14°- 210°F (EPDM)	14°- 170°F (Neoprene) 1 4°- 170°F (Nitrile) 14°- 210°F (EPDM)
Burst Pressure	853 psi	340 psi
Vacuum Rating	Contact API Sales	Contact API Sales

PART NUMBER STRUCTURE

Part Number Selection	Options
Type	AMS = Single Sphere (Steel)
Size	XXXX = Size in inches going out 2 decimal places
Body Material	NE = Neoprene EP = EPDM BN = Buna-N
Flange Material	10S = Schedule 10
Class	150 = 150# Drilling 300 = 300# Drilling PXX = DIN PN16 Drilling
Example	AMS0200-NE-STL-150 = Single Sphere Expansion Joint with Neoprene Body and Steel Flanges with 150# Drill Pattern

MATERIALS

Part	Part Description	Material
1	Flanges	Mild Steel - Plated or Stainless Steel
2	Reinforcing Wire	Mild Steel
3	Tube	Synthetic Rubber
4	Cover	Synthetic Rubber
5	Reinforcing Cord	Synthetic Fiber

Notes:

a. Product Specification For Lap Joint Type C MSS SP-43

Schedule:10S. Other Types, Schedules and sizes available upon request.

b. Standard material is 304L Stainless Steel, but available in other materials on request.

ALL DIMENSIONS ARE IN INCHES UNLESS OTHERWISE STATED.