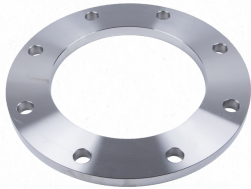


VISIT APIINT.COM FOR MORE INFORMATION.

YOUR SOURCE FOR PIPE FITTINGS & CUSTOM SOLUTIONS



FLANGES

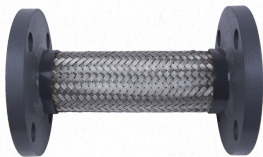
Meet wide variety of standards (ANSI, ASTM, AWWA, BS, DIN and JIS)

Broad range of types, sizes, materials (100% Domestic, Buy America & Imported) and accessories, like gaskets and flange adapters



FITTINGS & ACCESSORIES

Large inventory of grooved fittings (KLAMPz), threaded couplings, pipe nipples, elbows, pump motor brackets, rain caps and weld cones



PUMP CONNECTORS

Flanged and threaded pump connectors



VALVES

Variety of gear and lever operated butterfly valves, check valves and pressure relief valves, including accessories like valve extensions



EXPANSION JOINTS

Multiple sizes of flanged and union expansion joints, along with accessories like control units and split retaining rings



CUSTOM PARTS

Diverse selection of custom parts and assemblies manufactured and stocked for OEM Manufacturers in the Agriculture, Exhaust, HVAC & Water Works markets



MACHINING & MANUFACTURING

- Experience with a wide variety of products, sizes, materials and specifications utilizing Buy America, AIS or Import materials.
- Short lead times that allow you to get products to customers when they need them.
- Support fast turn modifications to stock items.
- Quality control technicians verify that all products meet customer requirements.

FLANGES

We manufacture standard and custom flanges to meet the highest quality standards, including AWWA and ANSI specifications. Our flanges are developed for Agriculture, Waterworks, HVAC, Exhaust, and other industries. Find flange options, including Domestic/American-made AIS, and import materials, including steel, stainless steel, aluminum, and ductile iron.

WHAT WE STOCK

- AWWA C207 & C228 Flanges
- 1/2" Thick Light Weight Flanges
- DIN (Metric) Flanges
- ANSI-Style Forged Flanges
- Plate Flanges
- Backing Flanges
- Exhaust Flanges
- Custom Machined Flanges



AWWA FLANGES (C207 & C228)

- Class B, D, E, F
- Carbon Steel, Stainless Steel, AIS, and Import Materials
- Slip-on Ring
- Blind
- Hub Ring



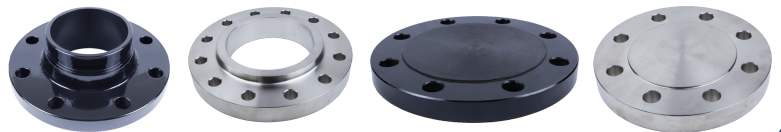
1/2" THICK LIGHT WEIGHT FLANGES

- ANSI Class 150 pattern specifications and in standard dimensions
- Carbon Steel and Stainless Steel
- Slip-on Ring
- Blind



ANSI-STYLE FORGED FLANGES

- Forged Carbon and Forged Stainless Steel
- ANSI Class 150 Raised Face Slip-on, Weld-neck, and Blind
- ANSI Class 300 Raised Face Slip-on, Weld-neck, and Blind



BACKING FLANGES

- Ductile Iron, Galvanized Ductile Iron, and Stainless Steel
- Ductile Iron Backing Flange For Stub Ends
- Ductile Iron Backing Flange for Angle Face Rings



EXHAUST FLANGES

- Carbon Steel and Stainless Steel
- Round and Square Exhaust Flange



PLATE FLANGES

- ANSI Class 150 Slip-on & Blind
- AWWA C207-13 Slip-on Flanges specifications.
- Butterfly Valve Adapter (4020)
- Butterfly Valve Flat (520)



DIN (METRIC) FLANGES

- Carbon Steel and Stainless Steel
- DN-PN 10 Slip-on & Ring
- DN-PN 16 Slip-on & Ring
- DN-PN 25 Slip-on & Ring

