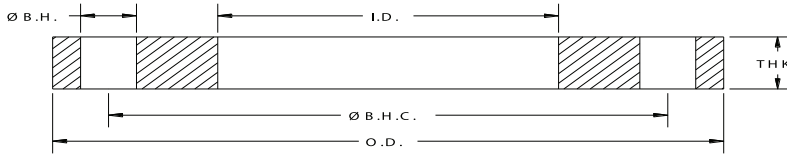


# Miscellaneous Plate Flanges

## Domestic & Import





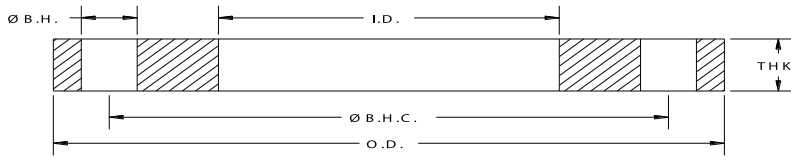
## Class 150 Steel Slip-on Plate Flanges

API Part Number	Size	O.D.	I.D.	Ø B.H.C.	Ø B.H.	# B.H.	THK	Weight Lbs
PF0050	0.5	3.50	0.88	2.38	0.630	4	0.500	1.2
PF0075	0.75	3.88	1.09	2.75	0.630	4	0.500	1.5
PF0100	1	4.25	1.36	3.13	0.630	4	0.500	1.8
PF0125	1.25	4.63	1.70	3.50	0.630	4	0.500	1.9
PF0150	1.5	5.00	1.95	3.88	0.630	4	0.630	2.9
PF0200	2	6.00	2.44	4.75	0.750	4	0.630	4.1
PF0250	2.5	7.00	2.94	5.50	0.750	4	0.630	5.4
PF0300	3	7.50	3.57	6.00	0.750	4	0.630	5.9
PF0400	4	9.00	4.57	7.50	0.750	8	0.630	8.1
PF0500	5	10.00	5.66	8.50	0.875	8	0.750	10.4
PF0600	6	11.00	6.72	9.50	0.875	8	0.750	11.4
PF0800	8	13.50	8.72	11.75	0.875	8	1.000	22.0
PFI000	10	16.00	10.88	14.25	1.000	12	1.000	28.5
PF1200	12	19.00	12.88	17.00	1.000	12	1.000	41.5

Notes:

- a. Flange material is steel (to AWWA C207-13 specifications). Specific grades of steel for structural or critical applications are available upon request.
- b. Meets ANSI class 150 pattern.

**ALL DIMENSIONS ARE IN INCHES UNLESS OTHERWISE STATED.**



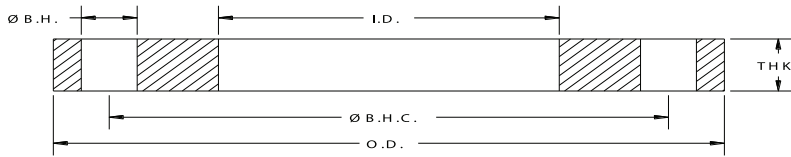
## Class 150 Stainless Steel Slip-on Plate Flanges

API Part Number	Size	O.D.	I.D.	Ø B.H.C	Ø B.H.	# B.H	THK	Weight lbs
SPF0050	0.5	3.50	0.88	2.38	0.630	4	0.500	1.2
SPF0075	0.75	3.88	1.09	2.75	0.630	4	0.500	1.5
SPF0100	1	4.25	1.36	3.13	0.630	4	0.500	1.8
SPF0125	1.25	4.63	1.70	3.50	0.630	4	0.500	1.9
SPF0150	1.5	5.00	1.95	3.88	0.630	4	0.630	2.9
SPF0200	2	6.00	2.44	4.75	0.750	4	0.630	4.1
SPF0250	2.5	7.00	2.94	5.50	0.750	4	0.630	5.4
SPF0300	3	7.50	3.57	6.00	0.750	4	0.630	5.9
SPF0400	4	9.00	4.57	7.50	0.750	8	0.630	8.1
SPF0500	5	10.00	5.66	8.50	0.875	8	0.750	10.4
SPF0600	6	11.00	6.72	9.50	0.875	8	0.750	11.4
SPF0800	8	13.50	8.72	11.75	0.875	8	1.000	22.0
SPF1000	10	16.00	10.88	14.25	1.000	12	1.000	28.5
SPF1200	12	19.00	12.88	17.00	1.000	12	1.000	41.5

Notes:

- a. All Stainless Steel flanges available in Dual Grade 304/304L or 316/316L.
- b. Meets ANSI class 150 pattern.

ALL DIMENSIONS ARE IN INCHES UNLESS OTHERWISE STATED.



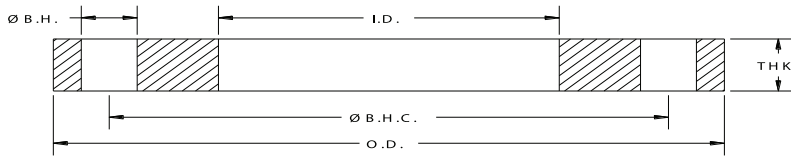
## Butterfly Valve Adapter 4020 Flange

API Part Number	Size	O.D.	Ø Serrations	Ø B.H.C	I.D.	# B.H.	Ø B.H.	THK
402032000	2	5.063	3.375	4.281	2.032	4	0.406	.469
402031000	3	5.750	4.250	4.906	3.032	6	0.438	.469
402028000	4	8.000	6.250	7.031	4.032	6	0.563	.469
402029000	5	8.500	7.000	7.563	5.032	6	0.563	.469
402030000	6	10.250	8.500	9.156	6.063	8	0.563	.469
402027000	8	13.500	11.750	11.750	8.032	8	0.750	.630
402036000	10	16.000	14.250	14.250	10.032	12	0.688	.630
402033000	12	19.000	17.000	17.000	12.000	12	1.000	.630

Notes:

- a. Material ASTM A105 Carbon Steel

ALL DIMENSIONS ARE IN INCHES UNLESS OTHERWISE STATED.



## Butterfly Valve Flat 520 Flange

API Part Number	Size	O.D.	Ø Serrations	Ø B.H.C	I.D.	# B.H.	Ø B.H.	THK
520693000	3	7.5	3.375	6.0	3.031	4	0.750	.375
520694000	4	9.0	4.250	9.0	4.031	8	0.750	.500
520696000	6	11.0	6.250	9.5	6.063	8	0.875	.500

Notes:

a. Material ASTM A105 Carbon Steel

ALL DIMENSIONS ARE IN INCHES UNLESS OTHERWISE STATED.