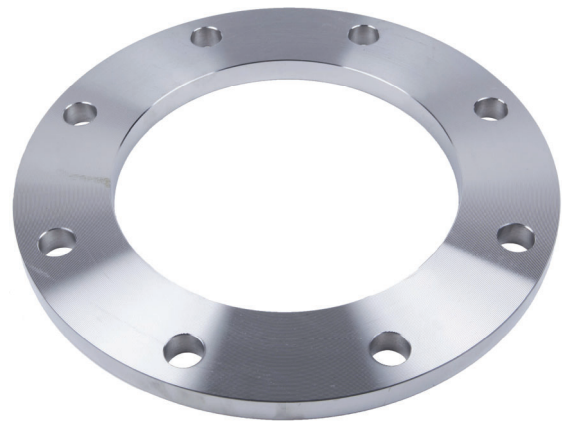


DIN Metric Flanges

Domestic & Import



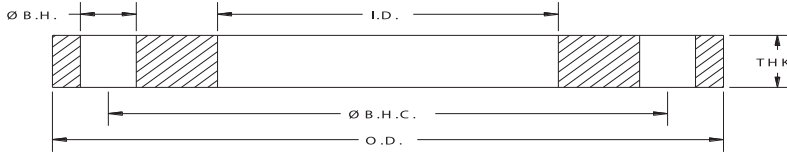
=	Identical
≈	Approximate
≠	Different
∅	No Size Available

DIN (Metric) Flange Dimensions Table

CLASSES

PN10, PN16 and PN25 are classes within the Deutsches Institute für Normung (DIN) flange specification for the pressure class and metric flange dimensions, including bolt hole diameter. We can also offer other classes upon request.

Size	PN10				PN16				PN25			
	STOCK	EN-1092	STOCK	EN-1092	STOCK	EN-1092	STOCK	EN-1092	STOCK	EN-1092	STOCK	EN-1092
25	1.38	1.36	0.630	0.630								
32	1.69	1.71	0.710	0.710								
40	1.97	1.95	0.710	0.710								
50	2.44	2.42	0.750	0.790								
65	2.95	3.05	0.790	0.790								
80	3.57	3.56	0.790	0.790								
100	4.57	4.57	0.870	0.870								
125	5.66	5.57	0.870	0.870								
150	6.72	6.71	0.950	0.950								
200	8.72	8.72	0.950	0.950								
250	10.88	10.89	1.020	1.030								
300	12.88	12.89	1.020	1.030								
350	14.19	14.15	1.180	1.190								
400	16.19	16.18	1.260	1.260								
450	18.19	18.19	1.380	1.420								
500	20.19	20.22	1.500	1.500								
600	24.19	24.27	1.650	1.660								
700	28.19	28.19	1.832	1.970								
800	32.19	32.19	2.013	2.200								
900	36.19	35.19	2.148	2.440								
1000	40.19	39.19	2.329	2.760								

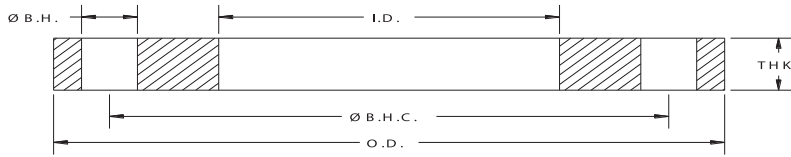


DIN Metric PN10 Steel Slip-on Flanges - EN 1092-1:2007 Spec's

API Part Number	Size		O.D.		I.D.		Ø B.H.C		Ø B.		# B.H	THK		Weight	
	in	mm	in	mm	in	mm	. in	mm	H. in	mm		in	mm	lb	kg
DN0025-PN10	1	25	4.53	115	1.36	34.5	3.35	85	0.550	14	4	0.630	16.0	2.5	1.1
DN0032-PN10	1.25	32	5.51	140	1.71	43.5	3.94	100	0.710	18	4	0.710	18.0	4.1	1.9
DN0040-PN10	1.5	40	5.91	150	1.95	49.5	4.33	110	0.710	18	4	0.710	18.0	4.6	2.1
DN0050-PN10	2	50	6.50	165	2.42	61.5	4.92	125	0.710	18	4	0.790	20.0	6.1	2.8
DN0065-PN10	2.5	65	7.28	185	3.05	77.5	5.71	145	0.710	18	4	0.790	20.0	7.3	3.3
DN0080-PN10	3	80	7.87	200	3.56	90.5	6.30	160	0.710	18	8	0.790	20.0	8.0	3.6
DN0100-PN10	4	100	8.66	220	4.57	116.0	7.09	180	0.710	18	8	0.870	22.0	9.7	4.4
DN0125-PN10	5	125	9.84	250	5.57	141.5	8.27	210	0.710	18	8	0.870	22.0	12.0	5.4
DN0150-PN10	6	150	11.22	285	6.71	170.4	9.45	240	0.870	22	8	0.944	24.0	16.0	7.3
DN0200-PN10	8	200	13.39	340	8.72	221.5	11.61	295	0.870	22	8	0.944	24.0	21.0	9.5
DN0250-PN10	10	250	15.55	395	10.89	276.5	13.78	350	0.870	22	12	1.024	26.0	26.5	12.0
DN0300-PN10	12	300	17.52	445	12.89	327.5	15.75	400	0.870	22	12	1.024	26.0	30.5	13.8
DN0350-PN10	14	350	19.88	505	14.15	359.5	18.11	460	0.870	22	16	1.181	30.0	48.0	21.8
DN0400-PN10	16	400	22.24	565	16.18	411.0	20.28	515	1.020	26	16	1.260	32.0	61.0	27.7
DN0450-PN10	18	450	24.21	615	18.19	462.0	22.24	565	1.020	26	20	1.417	36.0	74.5	33.8
DN0500-PN10	20	500	26.38	670	20.22	513.5	24.41	620	1.020	26	20	1.496	38.0	89.0	40.4
DN0600-PN10	24	600	30.71	780	24.27	616.5	28.54	725	1.180	30	20	1.654	42.0	120.0	54.5
DN0700-PN10	28	700	35.24	895	28.19	716.0	33.07	840	1.180	30	24	1.969	50.0	181.5	82.4
DN0800-PN10	32	800	39.96	1015	32.19	817.6	37.40	950	1.300	33	24	2.200	56.0	254.5	115.5
DN0900-PN10	36	900	43.90	1115	35.19	893.8	41.34	1050	1.300	33	28	2.440	62.0	348.5	158.2
DN1000-PN10	40	1000	48.42	1230	39.19	995.4	45.67	1160	1.420	36	28	2.760	70.0	462.5	210.0

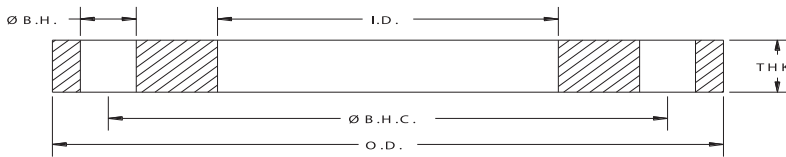
DIN Metric PN16 Steel Slip-on Flanges - EN 1092-1:2007 Spec's

API Part Number	Size		O.D.		I.D.		Ø B.H.C		Ø B.		# B.H	THK		Weight	
	in	mm	in	mm	in	mm	. in	mm	H. in	mm		in	mm	lb	kg
DN0200-PN16	8	200	13.39	340	8.72	221.5	11.61	295	0.870	22	12	1.030	26	22.00	10.0
DN0250-PN16	10	250	15.94	405	10.89	276.5	13.98	355	1.020	26	12	1.150	29	31.50	14.3
DN0300-PN16	12	300	18.11	460	12.89	327.5	16.14	410	1.020	26	12	1.260	32	42.00	19.1
DN0350-PN16	14	350	20.47	520	14.14	359.0	18.50	470	1.020	26	16	1.380	35	62.50	28.4
DN0400-PN16	16	400	22.83	580	16.18	411.0	20.67	525	1.180	30	16	1.500	38	79.50	36.1
DN0450-PN16	18	450	25.20	640	18.19	462.0	23.03	585	1.180	30	20	1.660	42	102.00	46.3
DN0500-PN16	20	500	28.15	715	20.22	513.5	25.59	650	1.300	33	20	1.820	46	142.00	64.5
DN0600-PN16	24	600	33.07	840	24.27	616.5	30.31	770	1.420	36	20	2.170	55	224.50	101.9
DN0700-PN16	28	700	35.83	910	28.19	716.0	33.07	840	1.420	36	24	2.480	63	243.50	110.5
DN0800-PN16	32	800	40.35	1025	32.19	817.6	37.40	950	1.540	39	24	2.920	74	347.50	157.8
DN0900-PN16	36	900	44.29	1125	35.19	893.8	41.34	1050	1.540	39	28	3.230	82	472.00	214.3
DN1000-PN16	40	1000	49.41	1255	39.19	995.4	46.06	1170	1.650	42	28	3.550	90	655.00	297.4



DIN Metric PN25 Steel Slip-on Flanges - EN 1092-1:2007 Spec's

API Part Number	Size		O.D.		I.D.		Ø B.H.C		Ø B.H		# B.H	THK		Weight	
	in	mm	in	mm	in	mm	. in	mm	. in	mm		in	mm	lb	kg
DN0100-PN25	4	100	9.25	235	4.57	116.0	7.48	190	0.870	22	8	1.030	26	13.5	6.1
DN0125-PN25	5	125	10.63	270	5.57	141.5	8.66	220	1.020	26	8	1.110	28	18.0	8.2
DN0150-PN25	6	150	11.81	300	6.71	170.5	9.84	250	1.020	26	8	1.180	30	23.0	10.4
DN0200-PN25	8	200	14.17	360	8.72	221.5	12.20	310	1.020	26	12	1.260	32	31.5	14.3
DN0250-PN25	10	250	16.73	425	10.89	276.5	14.57	370	1.180	30	12	1.380	35	44.5	20.2
DN0300-PN25	12	300	19.09	485	12.89	327.5	16.93	430	1.180	30	16	1.500	38	59.0	26.8
DN0350-PN25	14	350	21.85	555	14.15	359.5	19.29	490	1.300	33	16	1.660	42	92.0	41.8
DN0400-PN25	16	400	24.41	620	16.18	411.0	21.65	550	1.420	36	16	1.890	48	127.0	57.7
DN0450-PN25	18	450	26.38	670	18.19	462.0	23.62	600	1.420	36	20	2.130	54	154.0	69.9
DN0500-PN25	20	500	28.74	730	20.22	513.5	25.98	660	1.420	36	20	2.290	58	191.5	86.9
DN0600-PN25	24	600	33.27	845	24.27	616.5	30.31	770	1.540	39	20	2.680	68	280.5	127.3
DN0700-PN25	28	700	37.80	960	28.19	716.0	34.45	875	1.650	42	24	3.350	85	424.0	192.5



DIN Metric (PN10 Drilled) Stainless Steel Slip-on Flanges

API Part Number	Size		O.D.		I.D.		Ø B.H.C		Ø B.H		# B.H	THK		Weight	
	in	mm	in	mm	in	mm	. in	mm	. in	mm		in	mm	Lb	kg
SDN0025-PN10	1	25	4.53	115	1.38	35.10	3.35	85	0.550	14	4	0.630	16	2.5	1.1
SDN0032-PN10	1.3	32	5.51	140	1.69	42.90	3.94	100	0.710	18	4	0.710	18	3.8	1.7
SDN0040-PN10	1.5	40	5.91	150	1.97	50.00	4.33	110	0.710	18	4	0.710	18	4.3	2.0
SDN0050-PN10	2	50	6.50	165	2.44	62.00	4.92	125	0.710	18	4	0.750	19	5.8	2.6
SDN0065-PN10	2.5	65	7.28	185	2.94	74.90	5.71	145	0.710	18	4	0.790	20	7.3	3.3
SDN0080-PN10	3	80	7.87	200	3.57	90.70	6.30	160	0.710	18	8	0.790	20	8.0	3.6
SDN0100-PN10	4	100	8.66	220	4.57	116.10	7.09	180	0.710	18	8	0.870	22	9.0	4.1
SDN0125-PN10	5	125	9.84	250	5.66	143.80	8.27	210	0.710	18	8	0.870	22	13.0	5.9
SDN0150-PN10	6	150	11.22	285	6.72	170.70	9.45	240	0.870	22	8	0.950	24	15.3	6.9
SDN0200-PN10	8	200	13.39	340	8.72	221.50	11.61	295	0.870	22	8	0.950	24	21.0	9.5
SDN0250-PN10	10	250	15.55	395	10.88	276.40	13.78	350	0.870	22	12	1.020	26	26.5	12.0
SDN0300-PN10	12	300	17.52	445	12.88	327.20	15.75	400	0.870	22	12	1.020	28	30.0	13.6
SDN0350-PN10	14	350	19.88	505	14.19	360.40	18.11	460	0.870	22	16	1.180	30	44.7	20.3
SDN0400-PN10	16	400	22.24	565	16.19	411.20	20.28	515	1.020	26	16	1.260	32	60.5	27.5
SDN0450-PN10	18	450	24.21	615	18.19	462.00	22.24	565	1.020	26	20	1.380	35	72.0	32.7
SDN0500-PN10	20	500	26.38	670	20.19	512.80	24.41	620	1.020	26	20	1.500	38	90.0	40.9
SDN0600-PN10	24	600	30.71	780	24.19	614.40	28.54	725	1.160	29	20	1.650	42	121.5	55.2

DIN Metric (PN16 Drilled) Stainless Steel Slip-on Flanges

API Part Number	Size		O.D.		I.D.		Ø B.H.C		Ø B.H		# B.H	THK		Weight	
	in	mm	in	mm	in	mm	. in	mm	. in	mm		in	mm	Lb	kg
SDN0200-PN16	8	200	13.39	340	8.72	221.50	11.61	295	0.870	22	12	1.020	26	21.0	9.5
SDN0250-PN16	10	250	15.94	405	10.88	276.40	13.97	355	1.020	26	12	1.140	29	31.0	14.1
SDN0300-PN16	12	300	18.11	460	12.88	327.20	16.14	410	1.020	26	12	1.260	32	42.7	19.4
SDN0350-PN16	14	350	20.47	520	14.19	360.40	18.50	470	1.020	26	16	1.380	35	62.3	28.3
SDN0400-PN16	16	400	22.83	580	16.19	411.20	20.67	525	1.180	30	16	1.500	38	80.5	36.5
SDN0450-PN16	18	450	25.20	640	18.19	462.00	23.03	585	1.180	30	20	1.650	42	110.3	50.1
SDN0500-PN16	20	500	28.15	715	20.19	512.80	25.59	650	1.300	33	20	1.810	46	141.5	64.2
SDN0600-PN16	24	600	33.07	840	24.19	614.40	30.32	770	1.420	36	20	2.050	52	213.5	96.9

Note:

All Stainless Steel flanges available in Dual Grade 304/304L or 316/316L.