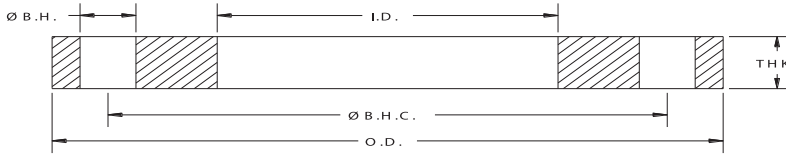


AWWA Flanges

C207/C228 Specifications

Domestic & Import





AWWA Class “B” C207 Steel-Ring Flanges [86 psi]

| API Part Number | Size | O.D. | I.D. | Ø B.H.C. | Ø B.H. | # B.H. | THK | Weight Lbs |
|-----------------|------|--------|--------|----------|--------|--------|-------|------------|
| PF0400-B | 4 | 9.00 | 4.57 | 7.50 | 0.750 | 8 | 0.625 | 7.7 |
| PF0500-B | 5 | 10.00 | 5.66 | 8.50 | 0.875 | 8 | 0.625 | 8.6 |
| PF0600-B | 6 | 11.00 | 6.72 | 9.50 | 0.875 | 8 | 0.688 | 10.7 |
| PF0800-B | 8 | 13.50 | 8.72 | 11.75 | 0.875 | 8 | 0.688 | 15.3 |
| PF1000-B | 10 | 16.00 | 10.88 | 14.25 | 1.000 | 12 | 0.688 | 19.2 |
| PF1200-B | 12 | 19.00 | 12.88 | 17.00 | 1.000 | 12 | 0.688 | 28.1 |
| PF1400-B | 14 | 21.00 | 14.19 | 18.75 | 1.125 | 12 | 0.688 | 34.4 |
| PF1600-B | 16 | 23.50 | 16.19 | 21.25 | 1.125 | 16 | 0.688 | 41.3 |
| PF1800-B | 18 | 25.00 | 18.19 | 22.75 | 1.250 | 16 | 0.688 | 41.2 |
| PF2000-B | 20 | 27.50 | 20.19 | 25.00 | 1.250 | 20 | 0.688 | 48.6 |
| PF2200-B | 22 | 29.50 | 22.19 | 27.25 | 1.375 | 20 | 0.750 | 56.8 |
| PF2400-B | 24 | 32.00 | 24.19 | 29.50 | 1.375 | 20 | 0.750 | 67.0 |
| PF2600-B | 26 | 34.25 | 26.19 | 31.75 | 1.375 | 24 | 0.812 | 79.3 |
| PF2800-B | 28 | 36.50 | 28.19 | 34.00 | 1.375 | 28 | 0.875 | 93.7 |
| PF3000-B | 30 | 38.75 | 30.19 | 36.00 | 1.375 | 28 | 0.875 | 103.9 |
| PF3200-B | 32 | 41.75 | 32.19 | 38.50 | 1.625 | 28 | 0.938 | 131.3 |
| PF3400-B | 34 | 43.75 | 34.19 | 40.50 | 1.625 | 32 | 0.938 | 137.0 |
| PF3600-B | 36 | 46.00 | 36.19 | 42.75 | 1.625 | 32 | 1.000 | 159.7 |
| PF3800-B | 38 | 48.75 | 38.19 | 45.25 | 1.625 | 32 | 1.000 | 184.5 |
| PF4000-B | 40 | 50.75 | 40.19 | 47.25 | 1.625 | 36 | 1.000 | 191.5 |
| PF4200-B | 42 | 53.00 | 42.19 | 49.50 | 1.625 | 36 | 1.125 | 232.5 |
| PF4400-B | 44 | 55.25 | 44.19 | 51.75 | 1.625 | 40 | 1.125 | 247.6 |
| PF4600-B | 46 | 57.25 | 46.19 | 53.75 | 1.625 | 40 | 1.125 | 258.6 |
| PF4800-B | 48 | 59.50 | 48.19 | 56.00 | 1.625 | 44 | 1.250 | 304.9 |
| PF5000-B | 50 | 61.75 | 50.19 | 58.25 | 1.875 | 44 | 1.250 | 315.2 |
| PF5200-B | 52 | 64.00 | 52.19 | 60.50 | 1.875 | 44 | 1.250 | 336.9 |
| PF5400-B | 54 | 66.25 | 54.19 | 62.75 | 1.875 | 44 | 1.375 | 395.1 |
| PF6000-B | 60 | 73.00 | 60.19 | 69.25 | 1.875 | 52 | 1.500 | 506.1 |
| PF6600-B | 66 | 80.00 | 66.19 | 76.00 | 1.875 | 52 | 1.625 | 661.1 |
| PF7200-B | 72 | 86.50 | 72.19 | 82.50 | 1.875 | 60 | 1.750 | 798.8 |
| PF7800-B | 78 | 93.00 | 78.19 | 89.00 | 2.125 | 64 | 2.000 | 995.6 |
| PF8400-B | 84 | 99.75 | 84.19 | 95.50 | 2.125 | 64 | 2.000 | 1140.7 |
| PF9000-B | 90 | 106.50 | 90.19 | 102.00 | 2.438 | 68 | 2.250 | 1408.8 |
| PF9600-B | 96 | 113.25 | 96.19 | 108.50 | 2.438 | 68 | 2.250 | 1591.2 |
| PF10200-B | 102 | 120.00 | 102.19 | 114.50 | 2.688 | 72 | 2.500 | 1918.7 |
| PF10800-B | 108 | 126.75 | 108.19 | 120.75 | 2.688 | 72 | 2.500 | 2142.6 |
| PF11400-B | 114 | 133.50 | 114.19 | 126.75 | 2.938 | 76 | 2.750 | 2534.1 |
| PF12000-B | 120 | 140.25 | 120.19 | 132.75 | 2.938 | 76 | 2.750 | 2803.9 |
| PF12600-B | 126 | 147.00 | 126.19 | 139.25 | 3.188 | 80 | 3.000 | 3263.6 |
| PF13200-B | 132 | 153.75 | 132.19 | 145.75 | 3.188 | 80 | 3.000 | 3583.5 |
| PF14400-B | 144 | 167.25 | 144.19 | 158.25 | 3.438 | 84 | 3.250 | 4489.5 |

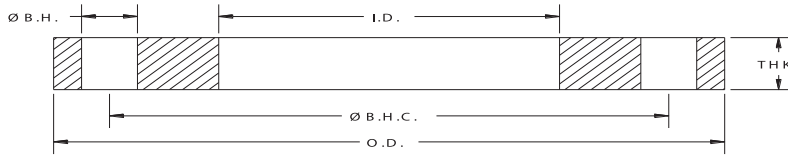
Notes:

- a. Steel material conforms to the requirements of AWWA C207 specifications. Other material is available upon request.
- b. Meets ANSI class 150 pattern.
- c. For flanges in smaller sizes see page 4.2.

Pressure Ratings: 86psi at atmospheric temperature.

ALL DIMENSIONS ARE IN INCHES UNLESS OTHERWISE STATED.

DC# 0524



AWWA Class “D” C207 Steel-Ring Flanges [150-175 psi]

| API Part Number | Size | O.D. | I.D. | Ø B.H.C. | Ø B.H. | # B.H. | THK | Weight Lbs |
|-----------------|------|--------|--------|----------|--------|--------|-------|------------|
| PF0400-D | 4 | 9.00 | 4.57 | 7.50 | 0.750 | 8 | 0.625 | 7.7 |
| PF0500-D | 5 | 10.00 | 5.66 | 8.50 | 0.875 | 8 | 0.625 | 8.6 |
| PF0600-D | 6 | 11.00 | 6.72 | 9.50 | 0.875 | 8 | 0.688 | 10.7 |
| PF0800-D | 8 | 13.50 | 8.72 | 11.75 | 0.875 | 8 | 0.688 | 15.3 |
| PF1000-D | 10 | 16.00 | 10.88 | 14.25 | 1.000 | 12 | 0.688 | 19.2 |
| PF1200-D | 12 | 19.00 | 12.88 | 17.00 | 1.000 | 12 | 0.812 | 33.1 |
| PF1400-D | 14 | 21.00 | 14.19 | 18.75 | 1.125 | 12 | 0.938 | 46.8 |
| PF1600-D | 16 | 23.50 | 16.19 | 21.25 | 1.125 | 16 | 1.000 | 60.1 |
| PF1800-D | 18 | 25.00 | 18.19 | 22.75 | 1.250 | 16 | 1.062 | 63.7 |
| PF2000-D | 20 | 27.50 | 20.19 | 25.00 | 1.250 | 20 | 1.125 | 79.5 |
| PF2200-D | 22 | 29.50 | 22.19 | 27.25 | 1.375 | 20 | 1.188 | 89.9 |
| PF2400-D | 24 | 32.00 | 24.19 | 29.50 | 1.375 | 20 | 1.250 | 111.6 |
| PF2600-D | 26 | 34.25 | 26.19 | 31.75 | 1.375 | 24 | 1.312 | 128.1 |
| PF2800-D | 28 | 36.50 | 28.19 | 34.00 | 1.375 | 28 | 1.312 | 140.6 |
| PF3000-D | 30 | 38.75 | 30.19 | 36.00 | 1.375 | 28 | 1.375 | 163.3 |
| PF3200-D | 32 | 41.75 | 32.19 | 38.50 | 1.625 | 28 | 1.500 | 210.0 |
| PF3400-D | 34 | 43.75 | 34.19 | 40.50 | 1.625 | 32 | 1.500 | 219.1 |
| PF3600-D | 36 | 46.00 | 36.19 | 42.75 | 1.625 | 32 | 1.625 | 259.4 |
| PF3800-D | 38 | 48.75 | 38.19 | 45.25 | 1.625 | 32 | 1.625 | 299.8 |
| PF4000-D | 40 | 50.75 | 40.19 | 47.25 | 1.625 | 36 | 1.625 | 311.1 |
| PF4200-D | 42 | 53.00 | 42.19 | 49.50 | 1.625 | 36 | 1.750 | 361.7 |
| PF4400-D | 44 | 55.25 | 44.19 | 51.75 | 1.625 | 40 | 1.750 | 385.1 |
| PF4600-D | 46 | 57.25 | 46.19 | 53.75 | 1.625 | 40 | 1.750 | 402.2 |
| PF4800-D | 48 | 59.50 | 48.19 | 56.00 | 1.625 | 44 | 1.875 | 457.3 |
| PF5000-D | 50 | 61.75 | 50.19 | 58.25 | 1.875 | 44 | 2.000 | 504.4 |
| PF5200-D | 52 | 64.00 | 52.19 | 60.50 | 1.875 | 44 | 2.000 | 539.1 |
| PF5400-D | 54 | 66.25 | 54.19 | 62.75 | 1.875 | 44 | 2.125 | 610.6 |
| PF6000-D | 60 | 73.00 | 60.19 | 69.25 | 1.875 | 52 | 2.250 | 759.1 |
| PF6600-D | 66 | 80.00 | 66.19 | 76.00 | 1.875 | 52 | 2.500 | 1017.0 |
| PF7200-D | 72 | 86.50 | 72.19 | 82.50 | 1.875 | 60 | 2.625 | 1198.2 |
| PF7800-D | 78 | 93.00 | 78.19 | 89.00 | 2.125 | 64 | 2.750 | 1368.9 |
| PF8400-D | 84 | 99.75 | 84.19 | 95.50 | 2.125 | 64 | 2.875 | 1639.7 |
| PF9000-D | 90 | 106.50 | 90.19 | 102.00 | 2.438 | 68 | 3.000 | 1878.2 |
| PF9600-D | 96 | 113.25 | 96.19 | 108.50 | 2.438 | 68 | 3.250 | 2298.4 |
| PF10200-D | 102 | 120.00 | 102.19 | 114.50 | 2.688 | 72 | 3.250 | 2494.3 |
| PF10800-D | 108 | 126.75 | 108.19 | 120.75 | 2.688 | 72 | 3.375 | 2892.5 |
| PF11400-D | 114 | 133.50 | 114.19 | 126.75 | 2.938 | 76 | 3.500 | 3225.2 |
| PF12000-D | 120 | 140.25 | 120.19 | 132.75 | 2.938 | 76 | 3.500 | 3568.6 |
| PF12600-D | 126 | 147.00 | 126.19 | 139.25 | 3.188 | 80 | 3.750 | 4079.5 |
| PF13200-D | 132 | 153.75 | 132.19 | 145.75 | 3.188 | 80 | 3.875 | 4628.6 |
| PF14400-D | 144 | 167.25 | 144.19 | 158.25 | 3.438 | 84 | 4.125 | 5698.3 |

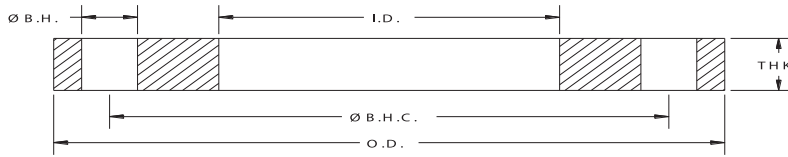
Notes:

- a. Steel material conforms to the requirements of AWWA C207 specifications. Other material is available upon request.
- b. Meets ANSI class 150 pattern
- c. For flanges in smaller sizes see page 4.2.

Pressure Ratings: 175psi (4" – 12") and 150psi (14" and larger) at atmospheric temperature.

ALL DIMENSIONS ARE IN INCHES UNLESS OTHERWISE STATED.

DC# 0524



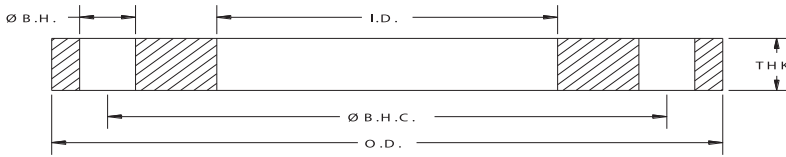
AWWA Class “D” C207 Steel-Ring Flanges for O.D. Tubing [150-175 psi]

| API Part Number | Size | O.D. | I.D. | Ø B.H.C. | Ø B.H. | # B.H. | THK | Weight Lbs |
|-----------------|------|-------|-------|----------|--------|--------|-------|------------|
| PF0400-D-16 | 4 | 9.00 | 4.06 | 7.50 | 0.750 | 8 | 0.625 | 8.5 |
| PF0500-D-16 | 5 | 10.00 | 5.06 | 8.50 | 0.875 | 8 | 0.625 | 9.6 |
| PF0600-D-16 | 6 | 11.00 | 6.09 | 9.50 | 0.875 | 8 | 0.688 | 12.0 |
| PF0800-D-16 | 8 | 13.50 | 8.09 | 11.75 | 0.875 | 8 | 0.688 | 17.1 |
| PF1000-D-16 | 10 | 16.00 | 10.12 | 14.25 | 1.000 | 12 | 0.688 | 22.0 |
| PF1200-D-16 | 12 | 19.00 | 12.12 | 17.00 | 1.000 | 12 | 0.812 | 37.9 |

Notes:

- a. Steel material conforms to the requirements of AWWA C207 specifications. Other material is available upon request.
- b. Meets ANSI class 150 pattern.

Pressure Ratings: 175psi (4" – 12") 150psi (14" and larger) at atmospheric temperature. ALL DIMENSIONS ARE IN INCHES UNLESS OTHERWISE STATED.



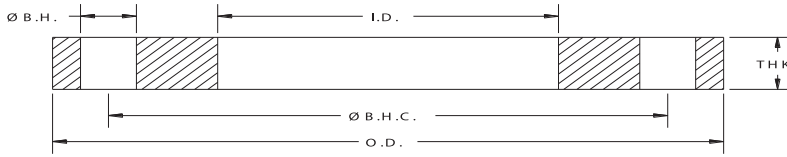
AWWA Class “D” C207 Steel-Ring Overbore Flanges [150-175 psi]

| API Part Number | Size | O.D. | I.D. | Ø B.H.C. | Ø B.H. | # B.H. | THK | Weight Lbs |
|-----------------|------|-------|-------|----------|--------|--------|-------|------------|
| PFOB1400-1613-D | 14 | 21.00 | 16.13 | 18.75 | 1.125 | 12 | 0.935 | 34.0 |
| PFOB1600-1813-D | 16 | 23.50 | 18.13 | 21.25 | 1.130 | 16 | 1.000 | 55.0 |
| PFOB1800-1988-D | 18 | 25.00 | 19.88 | 22.75 | 1.250 | 16 | 1.060 | 53.0 |
| PFOB1800-2013-D | 18 | 25.00 | 20.13 | 22.75 | 1.250 | 16 | 1.060 | 53.0 |
| PFOB2000-2188-D | 20 | 27.50 | 21.88 | 25.00 | 1.250 | 20 | 1.130 | 75.0 |
| PFOB2400-2588-D | 24 | 32.00 | 25.88 | 29.50 | 1.375 | 20 | 1.250 | 91.0 |
| PFOB2400-2613-D | 24 | 32.00 | 26.13 | 29.50 | 1.375 | 20 | 1.250 | 84.5 |
| PFOB3000-3200-D | 30 | 38.75 | 32.00 | 36.00 | 1.380 | 28 | 1.380 | 130.5 |
| PFOB3600-3800-D | 36 | 46.00 | 38.00 | 42.75 | 1.630 | 32 | 1.630 | 213.5 |
| PFOB4200-4400-D | 42 | 53.00 | 44.00 | 49.50 | 1.630 | 36 | 1.750 | 304.0 |
| PFOB4800-5000-D | 48 | 59.50 | 50.00 | 56.00 | 1.630 | 44 | 1.880 | 457.0 |

Notes:

- a. Steel material conforms to the requirements of AWWA C207 specifications. Other material is available upon request.
- b. Meets ANSI/ASME B16.5 Class 150 drilling pattern.
- c. Pressure Ratings: Class D. Sizes 4”-12” in, 175 psi; sizes 14” and larger, 150 psi. at atmospheric temperature.

ALL DIMENSIONS ARE IN INCHES UNLESS OTHERWISE STATED.



AWWA Class “E” C207 Steel-Ring Flanges [275psi]

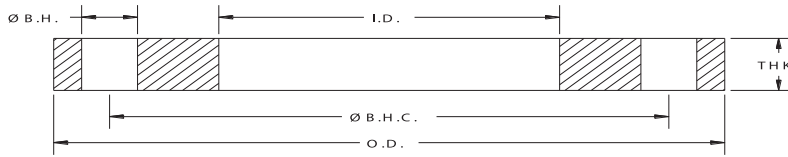
| API Part Number | Size | O.D. | I.D. | Ø B.H.C. | Ø B.H. | # B.H. | THK | Weight Lbs |
|-----------------|------|--------|--------|----------|--------|--------|-------|------------|
| PF0400-E | 4 | 9.00 | 4.57 | 7.50 | 0.750 | 8 | 1.125 | 13.9 |
| PF0500-E | 5 | 10.00 | 5.66 | 8.50 | 0.875 | 8 | 1.188 | 16.3 |
| PF0600-E | 6 | 11.00 | 6.72 | 9.50 | 0.875 | 8 | 1.313 | 20.4 |
| PF0800-E | 8 | 13.50 | 8.72 | 11.75 | 0.875 | 8 | 1.500 | 33.4 |
| PF1000-E | 10 | 16.00 | 10.88 | 14.25 | 1.000 | 12 | 1.563 | 43.7 |
| PF1200-E | 12 | 19.00 | 12.88 | 17.00 | 1.000 | 12 | 1.750 | 71.4 |
| PF1400-E | 14 | 21.00 | 14.19 | 18.75 | 1.125 | 12 | 1.875 | 93.7 |
| PF1600-E | 16 | 23.50 | 16.19 | 21.25 | 1.125 | 16 | 2.000 | 120.2 |
| PF1800-E | 18 | 25.00 | 18.19 | 22.75 | 1.250 | 16 | 2.125 | 127.3 |
| PF2000-E | 20 | 27.50 | 20.19 | 25.00 | 1.250 | 20 | 2.375 | 167.8 |
| PF2200-E | 22 | 29.50 | 22.19 | 27.25 | 1.375 | 20 | 2.500 | 189.2 |
| PF2400-E | 24 | 32.00 | 24.19 | 29.50 | 1.375 | 20 | 2.625 | 234.3 |
| PF2600-E | 26 | 34.25 | 26.19 | 31.75 | 1.375 | 24 | 2.750 | 268.4 |
| PF2800-E | 28 | 36.50 | 28.19 | 34.00 | 1.375 | 28 | 2.750 | 294.5 |
| PF3000-E | 30 | 38.75 | 30.19 | 36.00 | 1.375 | 28 | 2.875 | 341.4 |
| PF3200-E | 32 | 41.75 | 32.19 | 38.50 | 1.625 | 28 | 3.000 | 420.0 |
| PF3400-E | 34 | 43.75 | 34.19 | 40.50 | 1.625 | 32 | 3.000 | 438.3 |
| PF3600-E | 36 | 46.00 | 36.19 | 42.75 | 1.625 | 32 | 3.125 | 498.9 |
| PF3800-E | 38 | 48.75 | 38.19 | 45.25 | 1.625 | 32 | 3.125 | 576.5 |
| PF4000-E | 40 | 50.75 | 40.19 | 47.25 | 1.625 | 36 | 3.250 | 622.3 |
| PF4200-E | 42 | 53.00 | 42.19 | 49.50 | 1.625 | 36 | 3.375 | 697.6 |
| PF4400-E | 44 | 55.25 | 44.19 | 51.75 | 1.625 | 40 | 3.375 | 742.7 |
| PF4600-E | 46 | 57.25 | 46.19 | 53.75 | 1.625 | 40 | 3.438 | 790.2 |
| PF4800-E | 48 | 59.50 | 48.19 | 56.00 | 1.625 | 44 | 3.500 | 853.6 |
| PF5000-E | 50 | 61.75 | 50.19 | 58.25 | 1.875 | 44 | 3.500 | 882.7 |
| PF5200-E | 52 | 64.00 | 52.19 | 60.50 | 1.875 | 44 | 3.625 | 977.1 |
| PF5400-E | 54 | 66.25 | 54.19 | 62.75 | 1.875 | 44 | 3.750 | 1077.6 |
| PF6000-E | 60 | 73.00 | 60.19 | 69.25 | 1.875 | 52 | 3.875 | 1307.4 |
| PF6600-E | 66 | 80.00 | 66.19 | 76.00 | 1.875 | 52 | 4.250 | 1729.0 |
| PF7200-E | 72 | 86.50 | 72.19 | 82.50 | 1.875 | 60 | 4.375 | 1997.0 |
| PF7800-E | 78 | 93.00 | 78.19 | 89.00 | 2.125 | 64 | 4.750 | 2364.5 |
| PF8400-E | 84 | 99.75 | 84.19 | 95.50 | 2.125 | 64 | 4.750 | 2709.1 |
| PF9000-E | 90 | 106.50 | 90.19 | 102.00 | 2.438 | 68 | 5.125 | 3208.8 |
| PF9600-E | 96 | 113.25 | 96.19 | 108.50 | 2.438 | 68 | 5.125 | 3624.3 |
| PF10200-E | 102 | 120.00 | 102.19 | 114.50 | 2.688 | 72 | 5.500 | 4221.1 |
| PF10800-E | 108 | 126.75 | 108.19 | 120.75 | 2.688 | 72 | 5.500 | 4713.8 |
| PF11400-E | 114 | 133.50 | 114.19 | 126.75 | 2.938 | 76 | 5.875 | 5413.8 |
| PF12000-E | 120 | 140.25 | 120.19 | 132.75 | 2.938 | 76 | 5.875 | 5990.1 |
| PF12600-E | 126 | 147.00 | 126.19 | 139.25 | 3.188 | 80 | 6.250 | 6799.2 |
| PF13200-E | 132 | 153.75 | 132.19 | 145.75 | 3.188 | 80 | 6.250 | 8062.8 |
| PF14400-E | 144 | 167.25 | 144.19 | 158.25 | 3.438 | 84 | 6.750 | 9346.0 |

Notes:

- a. Steel material conforms to the requirements of AWWA C207 specifications. Other material is available upon request.
- b. Meets ANSI class 150 pattern.
- c. For flanges in smaller sizes see page 4.2.

Pressure Ratings: 275psi at atmospheric temperature.

ALL DIMENSIONS ARE IN INCHES UNLESS OTHERWISE STATED.



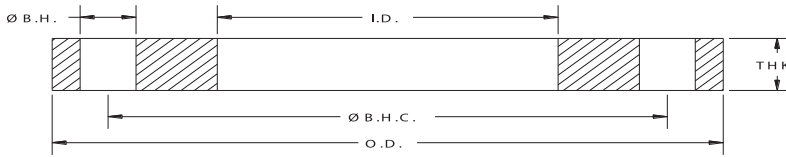
AWWA Class “E” C207 Steel-Ring Overbore Flanges [275 psi]

| API Part Number | Size | O.D. | I.D. | Ø B.H.C. | Ø B.H. | # B.H. | THK | Weight Lbs |
|-----------------|------|-------|-------|----------|--------|--------|-------|------------|
| PFOB1400-1613-E | 14 | 21.00 | 16.13 | 18.75 | 1.125 | 12 | 1.875 | 69.0 |
| PFOB1600-1813-E | 16 | 23.50 | 18.13 | 21.25 | 1.130 | 16 | 2.000 | 120.0 |
| PFOB1800-1988-E | 18 | 25.00 | 19.88 | 22.75 | 1.250 | 16 | 2.130 | 97.0 |
| PFOB1800-2013-E | 18 | 25.00 | 20.13 | 22.75 | 1.250 | 16 | 2.130 | 125.0 |
| PFOB2000-2188-E | 20 | 27.50 | 21.88 | 25.00 | 1.250 | 20 | 2.380 | 168.0 |
| PFOB2400-2588-E | 24 | 32.00 | 25.88 | 29.50 | 1.375 | 20 | 2.625 | 234.0 |
| PFOB2400-2594-E | 24 | 32.00 | 25.94 | 29.50 | 1.380 | 20 | 2.630 | 235.0 |
| PFOB2400-2613-E | 24 | 32.00 | 26.13 | 29.50 | 1.380 | 20 | 2.630 | 234.0 |
| PFOB3000-3200-E | 30 | 38.75 | 32.00 | 36.00 | 1.380 | 28 | 2.880 | 341.0 |
| PFOB3000-3206-E | 30 | 38.75 | 32.06 | 36.00 | 1.375 | 28 | 2.880 | 341.0 |
| PFOB3600-3800-E | 36 | 46.00 | 38.00 | 42.75 | 1.630 | 32 | 3.130 | 499.0 |
| PFOB4200-4400-E | 42 | 53.00 | 44.00 | 49.50 | 1.630 | 36 | 3.380 | 698.0 |
| PFOB4800-5000-E | 48 | 59.50 | 50.00 | 56.00 | 1.630 | 44 | 3.500 | 854.0 |

Notes:

- a. Steel material conforms to the requirements of AWWA C207 specifications. Other material is available upon request.
- b. Meets ANSI/ASME B16.5 Class 150 drilling pattern.
- c. Pressure Ratings: 275 psi. for all sizes at atmospheric temperature.

ALL DIMENSIONS ARE IN INCHES UNLESS OTHERWISE STATED.



AWWA Class “F” C207 Steel-Ring Flanges [300 psi]

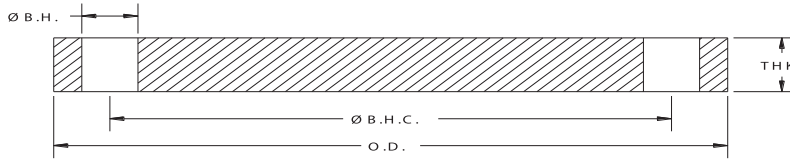
| API Part Number | Size | O.D. | I.D. | Ø B.H.C. | Ø B.H. | # B.H. | THK | Weight Lbs |
|-----------------|------|-------|-------|----------|--------|--------|-------|------------|
| PF0400-F | 4 | 10.00 | 4.57 | 7.88 | 0.875 | 8 | 1.130 | 18.4 |
| PF0500-F | 5 | 11.00 | 5.66 | 9.25 | 0.875 | 8 | 1.210 | 22.3 |
| PF0600-F | 6 | 12.50 | 6.73 | 10.62 | 0.875 | 12 | 1.310 | 29.7 |
| PF0800-F | 8 | 15.00 | 8.73 | 13.00 | 1.000 | 12 | 1.310 | 39.9 |
| PF1000-F | 10 | 17.50 | 10.88 | 15.25 | 1.125 | 16 | 1.500 | 56.0 |
| PF1200-F | 12 | 20.50 | 12.88 | 17.75 | 1.250 | 16 | 1.630 | 83.2 |
| PF1400-F | 14 | 23.00 | 14.19 | 20.25 | 1.250 | 20 | 1.940 | 128.0 |
| PF1600-F | 16 | 25.50 | 16.19 | 22.50 | 1.375 | 20 | 2.140 | 166.8 |
| PF1800-F | 18 | 28.00 | 18.19 | 24.75 | 1.375 | 24 | 2.250 | 204.2 |
| PF2000-F | 20 | 30.50 | 20.19 | 27.00 | 1.375 | 24 | 2.330 | 247.4 |
| PF2200-F | 22 | 33.00 | 22.19 | 29.25 | 1.375 | 24 | 2.500 | 306.7 |
| PF2400-F | 24 | 36.00 | 24.19 | 32.00 | 1.625 | 24 | 2.690 | 387.6 |
| PF2600-F | 26 | 38.25 | 26.19 | 34.50 | 1.875 | 28 | 3.000 | 451.0 |
| PF2800-F | 28 | 40.75 | 28.19 | 37.00 | 1.875 | 28 | 3.130 | 532.2 |
| PF3000-F | 30 | 43.00 | 30.19 | 39.25 | 1.875 | 28 | 3.150 | 585.7 |
| PF3200-F | 32 | 45.25 | 32.19 | 41.50 | 1.875 | 28 | 3.250 | 657.5 |
| PF3400-F | 34 | 47.50 | 34.19 | 43.50 | 1.875 | 28 | 3.380 | 743.0 |
| PF3600-F | 36 | 50.00 | 36.19 | 46.00 | 2.125 | 32 | 3.460 | 801.9 |
| PF3800-F | 38 | 52.25 | 38.19 | 48.00 | 2.125 | 32 | 3.500 | 874.3 |
| PF4000-F | 40 | 54.25 | 40.19 | 50.25 | 2.125 | 36 | 3.630 | 937.4 |
| PF4200-F | 42 | 57.00 | 42.19 | 52.75 | 2.125 | 36 | 3.810 | 1103.4 |
| PF4400-F | 44 | 59.25 | 44.19 | 55.00 | 2.125 | 36 | 4.000 | 1237.2 |
| PF4600-F | 46 | 61.50 | 46.19 | 57.25 | 2.125 | 40 | 4.130 | 1360.8 |
| PF4800-F | 48 | 65.00 | 48.19 | 60.75 | 2.125 | 40 | 4.500 | 1736.8 |

Notes:

- a. Steel material conforms to the requirements of AWWA C207 specifications. Other material is available upon request.
- b. Meets ANSI class 300 pattern.

Pressure Ratings: 300psi at atmospheric temperature.

ALL DIMENSIONS ARE IN INCHES UNLESS OTHERWISE STATED.



AWWA Class “B” Steel Blind Flanges - 2013 Specs [86 psi]

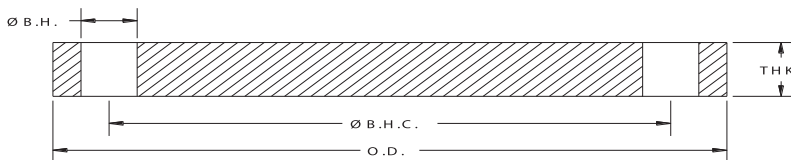
| API Part Number | Size | O.D. | I.D. | Ø B.H.C. | Ø B.H. | # B.H. | THK | Weight Lbs |
|-----------------|------|-------|-------|----------|--------|--------|-------|------------|
| PFBL0400-B | 4 | 9.00 | BLIND | 7.50 | 0.750 | 8 | 0.625 | 10.6 |
| PFBL0500-B | 5 | 10.00 | BLIND | 8.50 | 0.875 | 8 | 0.625 | 13.0 |
| PFBL0600-B | 6 | 11.00 | BLIND | 9.50 | 0.875 | 8 | 0.688 | 17.6 |
| PFBL0800-B | 8 | 13.50 | BLIND | 11.75 | 0.875 | 8 | 0.688 | 27.0 |
| PFBL1000-B | 10 | 16.00 | BLIND | 14.25 | 1.000 | 12 | 0.688 | 38.5 |
| PFBL1200-B | 12 | 19.00 | BLIND | 17.00 | 1.000 | 12 | 0.719 | 67.0 |
| PFBL1400-B | 14 | 21.00 | BLIND | 18.75 | 1.125 | 12 | 0.791 | 80.0 |
| PFBL1600-B | 16 | 23.50 | BLIND | 21.25 | 1.125 | 16 | 0.892 | 105.0 |
| PFBL1800-B | 18 | 25.00 | BLIND | 22.75 | 1.250 | 16 | 0.950 | 132.0 |
| PFBL2000-B | 20 | 27.50 | BLIND | 25.00 | 1.250 | 20 | 1.040 | 186.0 |
| PFBL2200-B | 22 | 29.50 | BLIND | 27.25 | 1.375 | 20 | 1.132 | 209.0 |
| PFBL2400-B | 24 | 32.00 | BLIND | 29.50 | 1.375 | 20 | 1.216 | 268.0 |
| PFBL2600-B | 26 | 34.25 | BLIND | 31.75 | 1.375 | 24 | 1.307 | 328.0 |
| PFBL2800-B | 28 | 36.50 | BLIND | 34.00 | 1.375 | 28 | 1.398 | 397.0 |
| PFBL3000-B | 30 | 38.75 | BLIND | 36.00 | 1.375 | 28 | 1.477 | 488.0 |
| PFBL3200-B | 32 | 41.75 | BLIND | 38.50 | 1.625 | 28 | 1.581 | 586.0 |
| PFBL3400-B | 34 | 43.75 | BLIND | 40.50 | 1.625 | 32 | 1.661 | 675.0 |
| PFBL3600-B | 36 | 46.00 | BLIND | 42.75 | 1.625 | 32 | 1.751 | 790.0 |
| PFBL3800-B | 38 | 48.75 | BLIND | 45.25 | 1.625 | 32 | 1.853 | 944.0 |
| PFBL4000-B | 40 | 50.75 | BLIND | 47.25 | 1.625 | 36 | 1.933 | 1066.0 |
| PFBL4200-B | 42 | 53.00 | BLIND | 49.50 | 1.625 | 36 | 2.023 | 1220.0 |
| PFBL4400-B | 44 | 55.25 | BLIND | 51.75 | 1.625 | 40 | 2.114 | 1385.0 |
| PFBL4600-B | 46 | 57.25 | BLIND | 53.75 | 1.625 | 40 | 2.194 | 1547.0 |
| PFBL4800-B | 48 | 59.50 | BLIND | 56.00 | 1.625 | 44 | 2.285 | 1739.0 |
| PFBL5000-B | 50 | 61.75 | BLIND | 58.25 | 1.875 | 44 | 2.377 | 1934.0 |
| PFBL5200-B | 52 | 64.00 | BLIND | 60.50 | 1.875 | 44 | 2.468 | 2163.0 |
| PFBL5400-B | 54 | 66.25 | BLIND | 62.75 | 1.875 | 44 | 2.559 | 2408.0 |
| PFBL6000-B | 60 | 73.00 | BLIND | 69.25 | 1.875 | 52 | 2.820 | 3225.0 |
| PFBL6600-B | 66 | 80.00 | BLIND | 76.00 | 1.875 | 52 | 3.092 | 4272.0 |
| PFBL7200-B | 72 | 86.50 | BLIND | 82.50 | 1.875 | 60 | 3.353 | 5418.0 |

Notes:

- a. Steel material conforms to the requirements of AWWA C207 specifications. Other material is available upon request.
- b. Meets ANSI class 150 pattern.
- c. AWWA recommends the use of Dish Assemblies for sizes above 72". Call API customer service for additional information.

Pressure Ratings: 86psi at atmospheric temperature.

ALL DIMENSIONS ARE IN INCHES UNLESS OTHERWISE STATED.



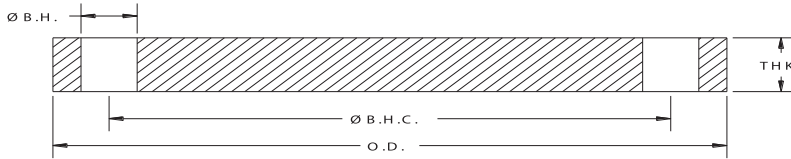
AWWA Class “D” Steel Blind Flanges [150-175 psi]

| API Part Number | Size | O.D. | I.D. | Ø B.H.C. | Ø B.H. | # B.H. | THK | Weight Lbs |
|-----------------|------|-------|-------|----------|--------|--------|-------|------------|
| PFBL0400-D | 4 | 9.00 | BLIND | 7.50 | 0.750 | 8 | 0.625 | 10.6 |
| PFBL0500-D | 5 | 10.00 | BLIND | 8.50 | 0.875 | 8 | 0.650 | 13.6 |
| PFBL0600-D | 6 | 11.00 | BLIND | 9.50 | 0.875 | 8 | 0.693 | 17.7 |
| PFBL0800-D | 8 | 13.50 | BLIND | 11.75 | 0.875 | 8 | 0.812 | 31.8 |
| PFBL1000-D | 10 | 16.00 | BLIND | 14.25 | 1.000 | 12 | 0.953 | 51.7 |
| PFBL1200-D | 12 | 19.00 | BLIND | 17.00 | 1.000 | 12 | 1.117 | 86.7 |
| PFBL1400-D | 14 | 21.00 | BLIND | 18.75 | 1.125 | 12 | 1.133 | 107.4 |
| PFBL1600-D | 16 | 23.50 | BLIND | 21.25 | 1.125 | 16 | 1.265 | 149.8 |
| PFBL1800-D | 18 | 25.00 | BLIND | 22.75 | 1.250 | 16 | 1.331 | 177.7 |
| PFBL2000-D | 20 | 27.50 | BLIND | 25.00 | 1.250 | 20 | 1.448 | 233.6 |
| PFBL2200-D | 22 | 29.50 | BLIND | 27.25 | 1.375 | 20 | 1.568 | 290.5 |
| PFBL2400-D | 24 | 32.00 | BLIND | 29.50 | 1.375 | 20 | 1.661 | 364.5 |
| PFBL2600-D | 26 | 34.25 | BLIND | 31.75 | 1.375 | 24 | 1.786 | 448.2 |
| PFBL2800-D | 28 | 36.50 | BLIND | 34.00 | 1.375 | 28 | 1.906 | 542.6 |
| PFBL3000-D | 30 | 38.75 | BLIND | 36.00 | 1.375 | 28 | 2.008 | 647.3 |
| PFBL3200-D | 32 | 41.75 | BLIND | 38.50 | 1.625 | 28 | 2.150 | 798.6 |
| PFBL3400-D | 34 | 43.75 | BLIND | 40.50 | 1.625 | 32 | 2.252 | 916.9 |
| PFBL3600-D | 36 | 46.00 | BLIND | 42.75 | 1.625 | 32 | 2.370 | 1071.4 |
| PFBL3800-D | 38 | 48.75 | BLIND | 45.25 | 1.625 | 32 | 2.506 | 1278.2 |
| PFBL4000-D | 40 | 50.75 | BLIND | 47.25 | 1.625 | 36 | 2.609 | 1440.1 |
| PFBL4200-D | 42 | 53.00 | BLIND | 49.50 | 1.625 | 36 | 2.729 | 1648.1 |
| PFBL4400-D | 44 | 55.25 | BLIND | 51.75 | 1.625 | 40 | 2.849 | 1868.2 |
| PFBL4600-D | 46 | 57.25 | BLIND | 53.75 | 1.625 | 40 | 2.952 | 2083.7 |
| PFBL4800-D | 48 | 59.50 | BLIND | 56.00 | 1.625 | 44 | 3.072 | 2340.7 |
| PFBL5000-D | 50 | 61.75 | BLIND | 58.25 | 1.875 | 44 | 3.196 | 2601.9 |
| PFBL5200-D | 52 | 64.00 | BLIND | 60.50 | 1.875 | 44 | 3.315 | 2907.5 |
| PFBL5400-D | 54 | 66.25 | BLIND | 62.75 | 1.875 | 44 | 3.435 | 3236.7 |
| PFBL6000-D | 60 | 73.00 | BLIND | 69.25 | 1.875 | 52 | 3.779 | 4327.6 |
| PFBL6600-D | 66 | 80.00 | BLIND | 76.00 | 1.875 | 52 | 4.136 | 5722.2 |
| PFBL7200-D | 72 | 86.50 | BLIND | 82.50 | 1.875 | 60 | 4.480 | 7249.0 |

Notes:

- Steel material conforms to the requirements of AWWA C207 specifications. Other material is available upon request.
- Meets ANSI class 150 pattern.
- AWWA recommends the use of Dish Assemblies for sizes above 72". Call API customer service for additional information.

Pressure Ratings: 175psi (4" - 12") and 150psi (14" and larger) at atmospheric temperature.
ALL DIMENSIONS ARE IN INCHES UNLESS OTHERWISE STATED.



AWWA Class “E” Steel Blind Flanges [275 psi]

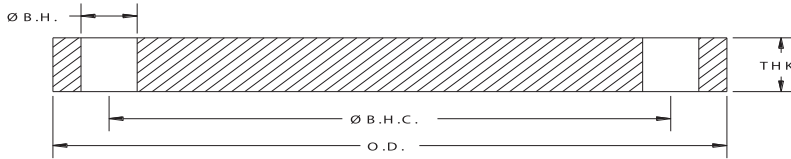
| API Part Number | Size | O.D. | I.D. | Ø B.H.C. | Ø B.H. | # B.H. | THK | Weight Lbs |
|-----------------|------|-------|-------|----------|--------|--------|-------|------------|
| PFBL0400-E | 4 | 9.00 | BLIND | 7.50 | 0.750 | 8 | 1.125 | 19.2 |
| PFBL0500-E | 5 | 10.00 | BLIND | 8.50 | 0.875 | 8 | 1.188 | 24.8 |
| PFBL0600-E | 6 | 11.00 | BLIND | 9.50 | 0.875 | 8 | 1.313 | 33.6 |
| PFBL0800-E | 8 | 13.50 | BLIND | 11.75 | 0.875 | 8 | 1.500 | 58.8 |
| PFBL1000-E | 10 | 16.00 | BLIND | 14.25 | 1.000 | 12 | 1.563 | 84.9 |
| PFBL1200-E | 12 | 19.00 | BLIND | 17.00 | 1.000 | 12 | 1.750 | 135.9 |
| PFBL1400-E | 14 | 21.00 | BLIND | 18.75 | 1.125 | 12 | 1.875 | 177.7 |
| PFBL1600-E | 16 | 23.50 | BLIND | 21.25 | 1.125 | 16 | 2.000 | 236.8 |
| PFBL1800-E | 18 | 25.00 | BLIND | 22.75 | 1.250 | 16 | 2.125 | 283.7 |
| PFBL2000-E | 20 | 27.50 | BLIND | 25.00 | 1.250 | 20 | 2.375 | 383.2 |
| PFBL2200-E | 22 | 29.50 | BLIND | 27.25 | 1.375 | 20 | 2.500 | 463.1 |
| PFBL2400-E | 24 | 32.00 | BLIND | 29.50 | 1.375 | 20 | 2.625 | 576.1 |
| PFBL2600-E | 26 | 34.25 | BLIND | 31.75 | 1.375 | 24 | 2.750 | 690.1 |
| PFBL2800-E | 28 | 36.50 | BLIND | 34.00 | 1.375 | 28 | 2.750 | 782.9 |
| PFBL3000-E | 30 | 38.75 | BLIND | 36.00 | 1.375 | 28 | 2.875 | 926.8 |
| PFBL3200-E | 32 | 41.75 | BLIND | 38.50 | 1.625 | 28 | 3.000 | 1114.3 |
| PFBL3400-E | 34 | 43.75 | BLIND | 40.50 | 1.625 | 32 | 3.050 | 1241.8 |
| PFBL3600-E | 36 | 46.00 | BLIND | 42.75 | 1.625 | 32 | 3.209 | 1450.7 |
| PFBL3800-E | 38 | 48.75 | BLIND | 45.25 | 1.625 | 32 | 3.394 | 1731.1 |
| PFBL4000-E | 40 | 50.75 | BLIND | 47.25 | 1.625 | 36 | 3.533 | 1950.2 |
| PFBL4200-E | 42 | 53.00 | BLIND | 49.50 | 1.625 | 36 | 3.695 | 2231.5 |
| PFBL4400-E | 44 | 55.25 | BLIND | 51.75 | 1.625 | 40 | 3.857 | 2529.4 |
| PFBL4600-E | 46 | 57.25 | BLIND | 53.75 | 1.625 | 40 | 3.997 | 2821.3 |
| PFBL4800-E | 48 | 59.50 | BLIND | 56.00 | 1.625 | 44 | 4.159 | 3169.0 |
| PFBL5000-E | 50 | 61.75 | BLIND | 58.25 | 1.875 | 44 | 4.327 | 3522.6 |
| PFBL5200-E | 52 | 64.00 | BLIND | 60.50 | 1.875 | 44 | 4.489 | 3937.1 |
| PFBL5400-E | 54 | 66.25 | BLIND | 62.75 | 1.875 | 44 | 4.651 | 4382.5 |
| PFBL6000-E | 60 | 73.00 | BLIND | 69.25 | 1.875 | 52 | 5.116 | 5858.7 |
| PFBL6600-E | 66 | 80.00 | BLIND | 76.00 | 1.875 | 52 | 5.601 | 7749.0 |
| PFBL7200-E | 72 | 86.50 | BLIND | 82.50 | 1.875 | 60 | 6.066 | 9815.3 |

Notes:

- a. Steel material conforms to the requirements of AWWA C207 specifications. Other material is available upon request.
- b. Meets ANSI class 150 pattern.
- c. AWWA recommends the use of Dish Assemblies for sizes above 72". Call API customer service for additional information.

Pressure Ratings: 275psi at atmospheric temperature.

ALL DIMENSIONS ARE IN INCHES UNLESS OTHERWISE STATED.



AWWA Class “F” Steel Blind Flanges [300 psi]

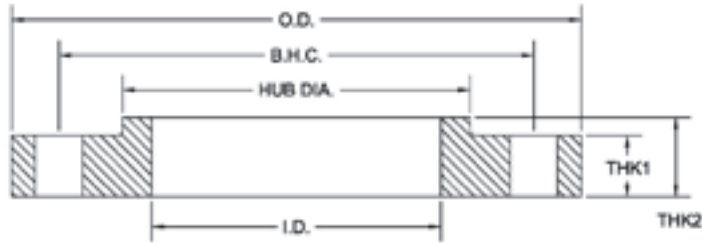
| API Part Number | Size | O.D. | I.D. | Ø B.H.C. | Ø B.H. | # B.H. | THK | Weight Lbs |
|-----------------|------|-------|-------|----------|--------|--------|-------|------------|
| PFBL0400-F | 4 | 10.00 | BLIND | 7.88 | 0.875 | 8 | 1.130 | 23.6 |
| PFBL0500-F | 5 | 11.00 | BLIND | 9.25 | 0.875 | 8 | 1.210 | 30.9 |
| PFBL0600-F | 6 | 12.50 | BLIND | 10.62 | 0.875 | 12 | 1.310 | 42.9 |
| PFBL0800-F | 8 | 15.00 | BLIND | 13.00 | 1.000 | 12 | 1.310 | 62.1 |
| PFBL1000-F | 10 | 17.50 | BLIND | 15.25 | 1.125 | 16 | 1.500 | 95.5 |
| PFBL1200-F | 12 | 20.50 | BLIND | 17.75 | 1.250 | 16 | 1.630 | 143.4 |
| PFBL1400-F | 14 | 23.00 | BLIND | 20.25 | 1.250 | 20 | 1.940 | 214.9 |
| PFBL1600-F | 16 | 25.50 | BLIND | 22.50 | 1.375 | 20 | 2.140 | 291.7 |
| PFBL1800-F | 18 | 28.00 | BLIND | 24.75 | 1.375 | 24 | 2.250 | 369.8 |
| PFBL2000-F | 20 | 30.50 | BLIND | 27.00 | 1.375 | 24 | 2.330 | 458.8 |
| PFBL2200-F | 22 | 33.00 | BLIND | 29.25 | 1.375 | 24 | 2.500 | 580.6 |
| PFBL2400-F | 24 | 36.00 | BLIND | 32.00 | 1.625 | 24 | 2.690 | 737.9 |
| PFBL2600-F | 26 | 38.25 | BLIND | 34.50 | 1.875 | 28 | 3.000 | 911.0 |
| PFBL2800-F | 28 | 40.75 | BLIND | 37.00 | 1.875 | 28 | 3.130 | 1088.0 |
| PFBL3000-F | 30 | 43.00 | BLIND | 39.25 | 1.875 | 28 | 3.166 | 1233.3 |
| PFBL3200-F | 32 | 45.25 | BLIND | 41.50 | 1.875 | 28 | 3.332 | 1445.2 |
| PFBL3400-F | 34 | 47.50 | BLIND | 43.50 | 1.875 | 28 | 3.475 | 1668.6 |
| PFBL3600-F | 36 | 50.00 | BLIND | 46.00 | 2.125 | 32 | 3.671 | 1924.2 |
| PFBL3800-F | 38 | 52.25 | BLIND | 48.00 | 2.125 | 32 | 3.815 | 2195.0 |
| PFBL4000-F | 40 | 54.25 | BLIND | 50.25 | 2.125 | 36 | 3.982 | 2463.8 |
| PFBL4200-F | 42 | 57.00 | BLIND | 52.75 | 2.125 | 36 | 4.171 | 2864.7 |
| PFBL4400-F | 44 | 59.25 | BLIND | 55.00 | 2.125 | 36 | 4.338 | 3231.9 |
| PFBL4600-F | 46 | 61.50 | BLIND | 57.25 | 2.125 | 40 | 4.505 | 3628.7 |
| PFBL4800-F | 48 | 65.00 | BLIND | 60.75 | 2.125 | 40 | 4.781 | 4322.1 |

Notes:

- a. Steel material conforms to the requirements of AWWA C207 specifications. Other material is available upon request.
- b. Meets ANSI class 300 pattern.

Pressure Ratings: 300psi at atmospheric temperature.

ALL DIMENSIONS ARE IN INCHES UNLESS OTHERWISE STATED.



AWWA Class “D” Steel Hub Ring Flange [150-175 psi]

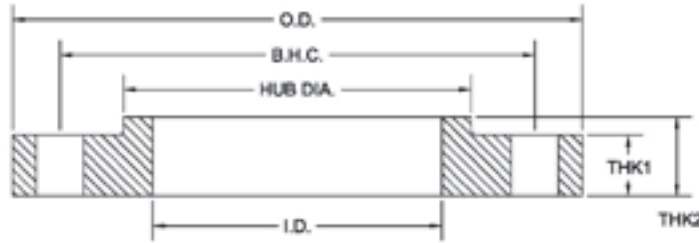
| API Part Number | Size | O.D. | I.D. | ∅ B.H.C. | ∅ B.H. | # B.H. | THK1 | THK2 | H.D. | Weight Lbs |
|-----------------|------|--------|-------|----------|--------|--------|-------|-------|---------|------------|
| PF0400-D-H | 4 | 9.00 | 4.57 | 7.50 | 0.750 | 8 | 0.500 | 0.875 | 5.312 | 6.8 |
| PF0500-D-H | 5 | 10.00 | 5.66 | 8.50 | 0.875 | 8 | 0.562 | 1.250 | 6.312 | 8.9 |
| PF0600-D-H | 6 | 11.00 | 6.72 | 9.50 | 0.875 | 8 | 0.562 | 1.250 | 7.562 | 10.5 |
| PF0800-D-H | 8 | 13.50 | 8.72 | 11.75 | 0.875 | 8 | 0.562 | 1.250 | 9.688 | 15.2 |
| PF1000-D-H | 10 | 16.00 | 10.88 | 14.25 | 1.000 | 12 | 0.688 | 1.250 | 12.000 | 22.4 |
| PF1200-D-H | 12 | 19.00 | 12.88 | 17.00 | 1.000 | 12 | 0.688 | 1.250 | 14.375 | 33.1 |
| PF1400-D-H | 14 | 21.00 | 14.19 | 18.75 | 1.125 | 12 | 0.750 | 1.250 | 15.750 | 42.6 |
| PF1600-D-H | 16 | 23.50 | 16.19 | 21.25 | 1.125 | 16 | 0.750 | 1.250 | 18.000 | 51.9 |
| PF1800-D-H | 18 | 25.00 | 18.19 | 22.75 | 1.250 | 16 | 0.750 | 1.250 | 19.875 | 52.0 |
| PF2000-D-H | 20 | 27.50 | 20.19 | 25.00 | 1.250 | 20 | 0.750 | 1.250 | 22.000 | 61.4 |
| PF2200-D-H | 22 | 29.50 | 22.19 | 27.25 | 1.375 | 20 | 1.000 | 1.750 | 24.250 | 91.5 |
| PF2400-D-H | 24 | 32.00 | 24.19 | 29.50 | 1.375 | 20 | 1.000 | 1.750 | 26.125 | 105.0 |
| PF2600-D-H | 26 | 34.25 | 26.19 | 31.75 | 1.375 | 24 | 1.000 | 1.750 | 28.500 | 119.0 |
| PF2800-D-H | 28 | 36.50 | 28.19 | 34.00 | 1.375 | 28 | 1.000 | 1.750 | 30.500 | 129.0 |
| PF3000-D-H | 30 | 38.75 | 30.19 | 36.00 | 1.375 | 28 | 1.000 | 1.750 | 32.500 | 143.0 |
| PF3200-D-H | 32 | 41.75 | 32.19 | 38.50 | 1.625 | 28 | 1.125 | 1.750 | 34.750 | 180.0 |
| PF3400-D-H | 34 | 43.75 | 34.19 | 40.50 | 1.625 | 32 | 1.125 | 1.750 | 36.750 | 189.0 |
| PF3600-D-H | 36 | 46.00 | 36.19 | 42.75 | 1.625 | 32 | 1.125 | 1.750 | 38.750 | 206.0 |
| PF3800-D-H | 38 | 48.75 | 38.19 | 45.25 | 1.625 | 32 | 1.125 | 1.750 | 40.750 | 236.0 |
| PF4000-D-H | 40 | 50.75 | 40.19 | 47.25 | 1.625 | 36 | 1.125 | 1.750 | 43.000 | 247.0 |
| PF4200-D-H | 42 | 53.00 | 42.19 | 49.50 | 1.625 | 36 | 1.250 | 1.750 | 45.000 | 285.0 |
| PF4400-D-H | 44 | 55.25 | 44.19 | 51.75 | 1.625 | 40 | 1.250 | 2.250 | 47.000 | 333.0 |
| PF4600-D-H | 46 | 57.25 | 46.19 | 53.75 | 1.625 | 40 | 1.250 | 2.250 | 49.000 | 348.0 |
| PF4800-D-H | 48 | 59.50 | 48.19 | 56.00 | 1.625 | 44 | 1.375 | 2.500 | 51.000 | 404.0 |
| PF5000-D-H | 50 | 61.75 | 50.19 | 58.25 | 1.875 | 44 | 1.375 | 2.500 | 53.000 | 420.0 |
| PF5200-D-H | 52 | 64.00 | 52.19 | 60.50 | 1.875 | 44 | 1.375 | 2.500 | 55.000 | 447.0 |
| PF5400-D-H | 54 | 66.25 | 54.19 | 62.75 | 1.875 | 44 | 1.375 | 2.500 | 57.000 | 472.0 |
| PF6000-D-H | 60 | 73.00 | 60.19 | 69.25 | 1.875 | 52 | 1.500 | 2.750 | 63.000 | 604.0 |
| PF6600-D-H | 66 | 80.00 | 66.19 | 76.00 | 1.875 | 52 | 1.500 | 2.750 | 69.000 | 717.0 |
| PF7200-D-H | 72 | 86.50 | 72.19 | 82.50 | 1.875 | 60 | 1.500 | 2.750 | 75.000 | 801.0 |
| PF7800-D-H | 78 | 93.00 | 78.19 | 89.00 | 2.125 | 64 | 1.750 | 3.000 | 81.250 | 1009.0 |
| PF8400-D-H | 84 | 99.75 | 84.19 | 95.50 | 2.125 | 64 | 1.750 | 3.000 | 87.500 | 1158.0 |
| PF9000-D-H | 90 | 106.50 | 90.19 | 102.00 | 2.438 | 68 | 2.000 | 3.200 | 93.750 | 1430.0 |
| PF9600-D-H | 96 | 113.25 | 96.19 | 108.50 | 2.438 | 68 | 2.000 | 3.250 | 100.000 | 1625.0 |

Notes:

- a. Steel material conforms to the requirements of AWWA C207 specifications. Other material is available upon request.
- b. Meets ANSI class 150 pattern.

Pressure Ratings: 175psi (4" – 12") 150psi (14" and larger) at atmospheric temperature.

ALL DIMENSIONS ARE IN INCHES UNLESS OTHERWISE STATED.



AWWA Class “E” Steel Hub Ring Flange [275 psi]

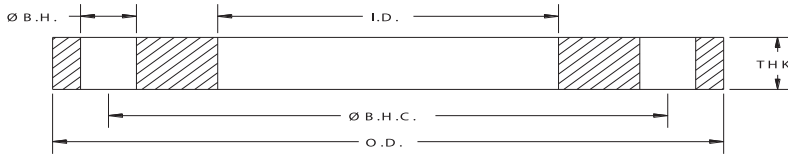
| API Part Number | Size | O.D. | I.D. | ∅ B.H.C. | ∅ B.H. | # B.H. | THK1 | THK2 | H.D. | Weight Lbs |
|-----------------|------|--------|-------|----------|--------|--------|-------|-------|---------|------------|
| PF0400-E-H | 4 | 9.00 | 4.57 | 7.50 | 0.750 | 8 | 0.938 | 1.312 | 5.312 | 12.2 |
| PF0500-E-H | 5 | 10.00 | 5.66 | 8.50 | 0.875 | 8 | 0.938 | 1.438 | 6.438 | 13.9 |
| PF0600-E-H | 6 | 11.00 | 6.72 | 9.50 | 0.875 | 8 | 1.000 | 1.562 | 7.562 | 17.0 |
| PF0800-E-H | 8 | 13.50 | 8.72 | 11.75 | 0.875 | 8 | 1.125 | 1.750 | 9.688 | 27.5 |
| PF1000-E-H | 10 | 16.00 | 10.88 | 14.25 | 1.000 | 12 | 1.188 | 1.938 | 12.000 | 37.4 |
| PF1200-E-H | 12 | 19.00 | 12.88 | 17.00 | 1.000 | 12 | 1.250 | 2.188 | 14.375 | 59.4 |
| PF1400-E-H | 14 | 21.00 | 14.19 | 18.75 | 1.125 | 12 | 1.375 | 2.250 | 15.750 | 77.7 |
| PF1600-E-H | 16 | 23.50 | 16.19 | 21.25 | 1.125 | 16 | 1.438 | 2.500 | 18.000 | 100.0 |
| PF1800-E-H | 18 | 25.00 | 18.19 | 22.75 | 1.250 | 16 | 1.562 | 2.688 | 19.875 | 109.0 |
| PF2000-E-H | 20 | 27.50 | 20.19 | 25.00 | 1.250 | 20 | 1.688 | 2.875 | 22.000 | 139.0 |
| PF2200-E-H | 22 | 29.50 | 22.19 | 27.25 | 1.375 | 20 | 1.812 | 3.125 | 24.000 | 161.0 |
| PF2400-E-H | 24 | 32.00 | 24.19 | 29.50 | 1.375 | 20 | 1.875 | 3.250 | 26.125 | 198.0 |
| PF2600-E-H | 26 | 34.25 | 26.19 | 31.75 | 1.375 | 24 | 2.000 | 3.375 | 28.500 | 235.0 |
| PF2800-E-H | 28 | 36.50 | 28.19 | 34.00 | 1.375 | 28 | 2.062 | 3.438 | 30.750 | 168.0 |
| PF3000-E-H | 30 | 38.75 | 30.19 | 36.00 | 1.375 | 28 | 2.125 | 3.530 | 32.750 | 303.0 |
| PF3200-E-H | 32 | 41.75 | 32.19 | 38.50 | 1.625 | 28 | 2.250 | 3.625 | 35.000 | 375.0 |
| PF3400-E-H | 34 | 43.75 | 34.19 | 40.50 | 1.625 | 32 | 2.312 | 3.688 | 37.000 | 400.0 |
| PF3600-E-H | 36 | 46.00 | 36.19 | 42.75 | 1.625 | 32 | 2.375 | 3.750 | 39.250 | 450.0 |
| PF3800-E-H | 38 | 48.75 | 38.19 | 45.25 | 1.625 | 32 | 2.375 | 3.750 | 41.750 | 527.0 |
| PF4000-E-H | 40 | 50.75 | 40.19 | 47.25 | 1.625 | 36 | 2.500 | 3.875 | 43.750 | 570.0 |
| PF4200-E-H | 42 | 53.00 | 42.19 | 49.50 | 1.625 | 36 | 2.625 | 4.000 | 46.000 | 650.0 |
| PF4400-E-H | 44 | 55.25 | 44.19 | 51.75 | 1.625 | 40 | 2.625 | 4.000 | 48.000 | 687.0 |
| PF4600-E-H | 46 | 57.25 | 46.19 | 53.75 | 1.625 | 40 | 2.688 | 4.062 | 50.000 | 732.0 |
| PF4800-E-H | 48 | 59.50 | 48.19 | 56.00 | 1.625 | 44 | 2.750 | 4.125 | 52.250 | 800.0 |
| PF5000-E-H | 50 | 61.75 | 50.19 | 58.25 | 1.875 | 44 | 2.750 | 4.125 | 54.250 | 826.0 |
| PF5200-E-H | 52 | 64.00 | 52.19 | 60.50 | 1.875 | 44 | 2.875 | 4.250 | 56.500 | 921.0 |
| PF5400-E-H | 54 | 66.25 | 54.19 | 62.75 | 1.875 | 44 | 3.000 | 4.375 | 58.750 | 1022.0 |
| PF6000-E-H | 60 | 73.00 | 60.19 | 69.25 | 1.875 | 52 | 3.125 | 4.500 | 65.250 | 1252.0 |
| PF6600-E-H | 66 | 80.00 | 66.19 | 76.00 | 1.875 | 52 | 3.375 | 4.875 | 71.500 | 1621.0 |
| PF7200-E-H | 72 | 86.50 | 72.19 | 82.50 | 1.875 | 60 | 3.500 | 5.000 | 78.500 | 1919.0 |
| PF7800-E-H | 78 | 93.00 | 78.19 | 89.00 | 2.125 | 64 | 3.875 | 5.375 | 84.500 | 2277.0 |
| PF8400-E-H | 84 | 99.75 | 84.19 | 95.50 | 2.125 | 64 | 3.875 | 5.375 | 90.500 | 2583.0 |
| PF9000-E-H | 90 | 106.50 | 90.19 | 102.00 | 2.438 | 68 | 4.250 | 5.750 | 96.750 | 3076.0 |
| PF9600-E-H | 96 | 113.25 | 96.19 | 108.50 | 2.438 | 68 | 4.250 | 5.750 | 102.750 | 3448.0 |

Notes:

- a. Steel material conforms to the requirements of AWWA C207 specifications. Other material is available upon request.
- b. Meets ANSI class 150 pattern.

Pressure Ratings: 275psi at atmospheric temperature.

ALL DIMENSIONS ARE IN INCHES UNLESS OTHERWISE STATED.



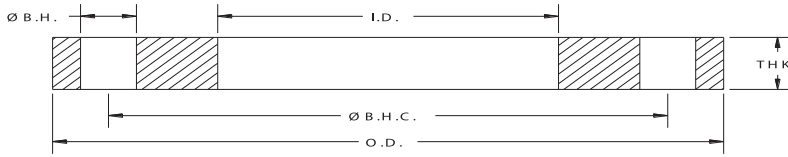
AWWA Class “SA” Stainless Steel-Ring Flanges [50psi]

| API Part Number | Size | O.D. | I.D. | Ø B.H.C | Ø B.H. | # B.H | THK | Weight lbs |
|-----------------|------|-------|-------|---------|--------|-------|-------|------------|
| SPF0200-A | 2 | 6.00 | 2.44 | 4.75 | 0.750 | 4 | 0.500 | 3.0 |
| SPF0250-A | 2.5 | 7.00 | 2.94 | 5.50 | 0.750 | 4 | 0.500 | 4.0 |
| SPF0300-A | 3 | 7.50 | 3.57 | 6.00 | 0.750 | 4 | 0.500 | 4.7 |
| SPF0400-A | 4 | 9.00 | 4.57 | 7.50 | 0.750 | 8 | 0.500 | 6.4 |
| SPF0500-A | 5 | 10.00 | 5.66 | 8.50 | 0.875 | 8 | 0.500 | 7.2 |
| SPF0600-A | 6 | 11.00 | 6.72 | 9.50 | 0.875 | 8 | 0.500 | 8.4 |
| SPF0800-A | 8 | 13.50 | 8.72 | 11.75 | 0.875 | 8 | 0.500 | 11.4 |
| SPF1000-A | 10 | 16.00 | 10.88 | 14.25 | 1.000 | 12 | 0.625 | 17.4 |
| SPF1200-A | 12 | 19.00 | 12.88 | 17.00 | 1.000 | 12 | 0.625 | 25.5 |
| SPF1400-A | 14 | 21.00 | 14.19 | 18.75 | 1.125 | 12 | 0.625 | 31.3 |

Notes:

- a. All Stainless Steel flanges available in Dual Grade 304/304L or 316/316L. Material conforms to the requirements of AWWA C228 specifications. Other material is available upon request.
- b. Meets ANSI class 150 pattern.
- c. For flanges larger than 14" see AWWA Class "B"
- d. Class SB is being sold as the recommended product for sizes 10", 12", 14" and meet/exceed the required pressure ratings for Class SA
- e. Thickness Spec's (sizes 10", 12", 14"):
 - i. AWWA Class A requires minimum .625" (+.125;- .000).
 - ii. AWWA Class B requires minimum .688" (.125"; -.000).
- f. AWWA Class A acceptable thickness (sizes 10", 12", 14"): .625 -.750"
- g. **Pressure Ratings: 275psi at atmospheric temperature.**

ALL DIMENSIONS ARE IN INCHES UNLESS OTHERWISE STATED.



AWWA Class “SB” Stainless Steel-Ring Flanges [86 psi]

| API Part Number | Size | O.D. | I.D. | Ø B.H.C. | Ø B.H. | # B.H. | THK | Weight Lbs |
|-----------------|------|-------|-------|----------|--------|--------|-------|------------|
| SPF0200-B | 2 | 6.00 | 2.44 | 4.75 | 0.750 | 4 | 0.625 | 3.9 |
| SPF0250-B | 2.5 | 7.00 | 2.94 | 5.50 | 0.750 | 4 | 0.625 | 5.3 |
| SPF0300-B | 3 | 7.50 | 3.57 | 6.00 | 0.750 | 4 | 0.625 | 5.7 |
| SPF0400-B | 4 | 9.00 | 4.57 | 7.50 | 0.750 | 8 | 0.625 | 7.7 |
| SPF0500-B | 5 | 10.00 | 5.66 | 8.50 | 0.875 | 8 | 0.625 | 8.6 |
| SPF0600-B | 6 | 11.00 | 6.72 | 9.50 | 0.875 | 8 | 0.688 | 10.7 |
| SPF0800-B | 8 | 13.50 | 8.72 | 11.75 | 0.875 | 8 | 0.688 | 15.3 |
| SPF1000-B | 10 | 16.00 | 10.88 | 14.25 | 1.000 | 12 | 0.688 | 19.2 |
| SPF1200-B | 12 | 19.00 | 12.88 | 17.00 | 1.000 | 12 | 0.688 | 29.3 |
| SPF1400-B | 14 | 21.00 | 14.19 | 18.75 | 1.125 | 12 | 0.688 | 36.2 |
| SPF1600-B | 16 | 23.50 | 16.19 | 21.25 | 1.125 | 16 | 0.688 | 42.2 |
| SPF1800-B | 18 | 25.00 | 18.19 | 22.75 | 1.250 | 16 | 0.688 | 44.8 |
| SPF2000-B | 20 | 27.50 | 20.19 | 25.00 | 1.250 | 20 | 0.688 | 52.1 |
| SPF2200-B | 22 | 29.50 | 22.19 | 27.25 | 1.375 | 20 | 0.750 | 60.9 |
| SPF2400-B | 24 | 32.00 | 24.19 | 29.50 | 1.375 | 20 | 0.750 | 71.0 |
| SPF2600-B | 26 | 34.25 | 26.19 | 31.75 | 1.375 | 24 | 0.812 | 80.0 |
| SPF2800-B | 28 | 36.50 | 28.19 | 34.00 | 1.375 | 28 | 0.875 | 94.0 |
| SPF3000-B | 30 | 38.75 | 30.19 | 36.00 | 1.375 | 28 | 0.875 | 108.0 |
| SPF3200-B | 32 | 41.75 | 32.19 | 38.50 | 1.625 | 28 | 0.938 | 121.0 |
| SPF3400-B | 34 | 43.75 | 34.19 | 40.50 | 1.625 | 32 | 0.938 | 137.0 |
| SPF3600-B | 36 | 46.00 | 36.19 | 42.75 | 1.625 | 32 | 1.000 | 166.0 |
| SPF3800-B | 38 | 48.75 | 38.19 | 45.25 | 1.625 | 32 | 1.000 | 185.0 |
| SPF4000-B | 40 | 50.75 | 40.19 | 47.25 | 1.625 | 36 | 1.000 | 203.0 |
| SPF4200-B | 42 | 53.00 | 42.19 | 49.50 | 1.625 | 36 | 1.125 | 241.0 |
| SPF4400-B | 44 | 55.25 | 44.19 | 51.75 | 1.625 | 40 | 1.125 | 248.0 |
| SPF4600-B | 46 | 57.25 | 46.19 | 53.75 | 1.625 | 40 | 1.125 | 259.0 |
| SPF4800-B | 48 | 59.50 | 48.19 | 56.00 | 1.625 | 44 | 1.250 | 285.0 |
| SPF5000-B | 50 | 61.75 | 50.19 | 58.25 | 1.875 | 44 | 1.250 | 316.0 |
| SPF5200-B | 52 | 64.00 | 52.19 | 60.50 | 1.875 | 44 | 1.250 | 338.0 |
| SPF5400-B | 54 | 66.25 | 54.19 | 62.75 | 1.875 | 44 | 1.375 | 397.0 |
| SPF6000-B | 60 | 73.00 | 60.19 | 69.25 | 1.875 | 52 | 1.500 | 472.0 |

Notes

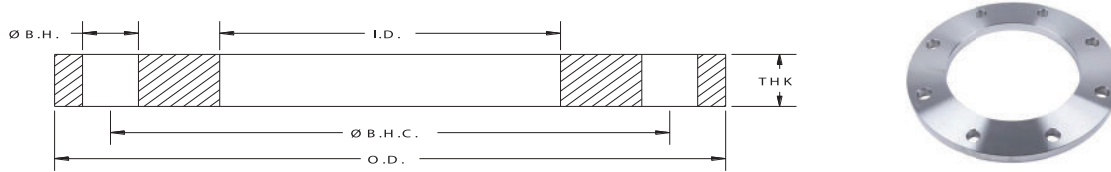
a. All Stainless Steel flanges available in Dual Grade 304/304L or 316/316L. Material conforms to the requirements of AWWA C228 specifications. Other material is available upon request.

b. Meets ANSI class 150 pattern.

c. For flanges in smaller sizes see page 4.3.

Pressure Ratings: 86psi at atmospheric temperature.

ALL DIMENSIONS ARE IN INCHES UNLESS OTHERWISE STATED.



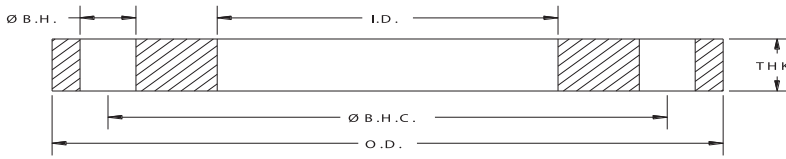
AWWA Class “SD” Stainless Steel-Ring Flanges [150-175 psi]

| API Part Number | Size | O.D. | I.D. | Ø B.H.C. | Ø B.H. | # B.H. | THK | Weight Lbs |
|-----------------|------|-------|-------|----------|--------|--------|-------|------------|
| SPF0200-D | 2 | 6.00 | 2.44 | 4.75 | 0.750 | 4 | 0.625 | 3.9 |
| SPF0250-D | 2.5 | 7.00 | 2.94 | 5.50 | 0.750 | 4 | 0.625 | 5.3 |
| SPF0300-D | 3 | 7.50 | 3.57 | 6.00 | 0.750 | 4 | 0.625 | 5.7 |
| SPF0400-D | 4 | 9.00 | 4.57 | 7.50 | 0.750 | 8 | 0.625 | 8.1 |
| SPF0500-D | 5 | 10.00 | 5.66 | 8.50 | 0.875 | 8 | 0.625 | 9.1 |
| SPF0600-D | 6 | 11.00 | 6.72 | 9.50 | 0.875 | 8 | 0.688 | 10.7 |
| SPF0800-D | 8 | 13.50 | 8.72 | 11.75 | 0.875 | 8 | 0.688 | 15.7 |
| SPF1000-D | 10 | 16.00 | 10.88 | 14.25 | 1.000 | 12 | 0.688 | 19.3 |
| SPF1200-D | 12 | 19.00 | 12.88 | 17.00 | 1.000 | 12 | 0.812 | 33.9 |
| SPF1400-D | 14 | 21.00 | 14.19 | 18.75 | 1.125 | 12 | 0.938 | 47.3 |
| SPF1600-D | 16 | 23.50 | 16.19 | 21.25 | 1.125 | 16 | 1.000 | 60.8 |
| SPF1800-D | 18 | 25.00 | 18.19 | 22.75 | 1.250 | 16 | 1.062 | 65.2 |
| SPF2000-D | 20 | 27.50 | 20.19 | 25.00 | 1.250 | 20 | 1.125 | 81.2 |
| SPF2200-D | 22 | 29.50 | 22.19 | 27.25 | 1.375 | 20 | 1.188 | 90.8 |
| SPF2400-D | 24 | 32.00 | 24.19 | 29.50 | 1.375 | 20 | 1.250 | 112.0 |
| SPF2600-D | 26 | 34.25 | 26.19 | 31.75 | 1.375 | 24 | 1.312 | 132.0 |
| SPF2800-D | 28 | 36.50 | 28.19 | 34.00 | 1.375 | 28 | 1.312 | 148.0 |
| SPF3000-D | 30 | 38.75 | 30.19 | 36.00 | 1.375 | 28 | 1.375 | 169.0 |
| SPF3200-D | 32 | 41.75 | 32.19 | 38.50 | 1.625 | 28 | 1.500 | 211.0 |
| SPF3400-D | 34 | 43.75 | 34.19 | 40.50 | 1.625 | 32 | 1.500 | 219.0 |
| SPF3600-D | 36 | 46.00 | 36.19 | 42.75 | 1.625 | 32 | 1.625 | 265.0 |
| SPF3800-D | 38 | 48.75 | 38.19 | 45.25 | 1.625 | 32 | 1.625 | 300.0 |
| SPF4000-D | 40 | 50.75 | 40.19 | 47.25 | 1.625 | 36 | 1.625 | 311.0 |
| SPF4200-D | 42 | 53.00 | 42.19 | 49.50 | 1.625 | 36 | 1.750 | 362.0 |
| SPF4400-D | 44 | 55.25 | 44.19 | 51.75 | 1.625 | 40 | 1.750 | 385.0 |
| SPF4600-D | 46 | 57.25 | 46.19 | 53.75 | 1.625 | 40 | 1.750 | 404.0 |
| SPF4800-D | 48 | 59.50 | 48.19 | 56.00 | 1.625 | 44 | 1.875 | 457.0 |
| SPF5000-D | 50 | 61.75 | 50.19 | 58.25 | 1.875 | 44 | 2.000 | 505.0 |
| SPF5200-D | 52 | 64.00 | 52.19 | 60.50 | 1.875 | 44 | 2.000 | 539.0 |
| SPF5400-D | 54 | 66.25 | 54.19 | 62.75 | 1.875 | 44 | 2.125 | 611.0 |
| SPF6000-D | 60 | 73.00 | 60.19 | 69.25 | 1.875 | 52 | 2.250 | 760.0 |

Notes:

- a. All Stainless Steel flanges available in Dual Grade 304/304L or 316/316L. Material conforms to the requirements of AWWA C228 specifications. Other material is available upon request.
- b. Meets ANSI class 150 pattern.
- c. For flanges in smaller sizes see page 4.3.

**Pressure Ratings: 175psi (4" - 12") and 150psi (14" and larger) at atmospheric temperature.
ALL DIMENSIONS ARE IN INCHES UNLESS OTHERWISE STATED.**



AWWA Class “SE” Stainless Steel-Ring Flanges [275 psi]

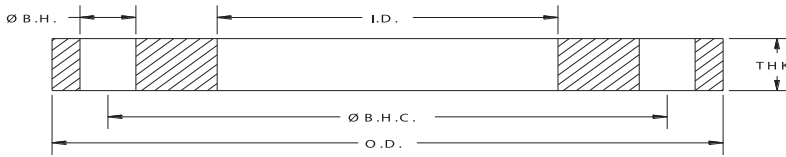
| API Part Number | Size | O.D. | I.D. | Ø B.H.C. | Ø B.H. | # B.H. | THK | Weight Lbs |
|-----------------|------|-------|-------|----------|--------|--------|-------|------------|
| SPF0200-E | 2 | 6.00 | 2.44 | 4.75 | 0.750 | 4 | 1.125 | 6.9 |
| SPF0250-E | 2.5 | 7.00 | 2.94 | 5.50 | 0.750 | 4 | 1.125 | 9.5 |
| SPF0300-E | 3 | 7.50 | 3.57 | 6.00 | 0.750 | 4 | 1.125 | 10.3 |
| SPF0400-E | 4 | 9.00 | 4.57 | 7.50 | 0.750 | 8 | 1.125 | 14.1 |
| SPF0500-E | 5 | 10.00 | 5.66 | 8.50 | 0.875 | 8 | 1.188 | 16.7 |
| SPF0600-E | 6 | 11.00 | 6.72 | 9.50 | 0.875 | 8 | 1.313 | 21.1 |
| SPF0800-E | 8 | 13.50 | 8.72 | 11.75 | 0.875 | 8 | 1.500 | 34.4 |
| SPF1000-E | 10 | 16.00 | 10.88 | 14.25 | 1.000 | 12 | 1.563 | 45.9 |
| SPF1200-E | 12 | 19.00 | 12.88 | 17.00 | 1.000 | 12 | 1.750 | 72.3 |
| SPF1400-E | 14 | 21.00 | 14.19 | 18.75 | 1.125 | 12 | 1.875 | 97.7 |
| SPF1600-E | 16 | 23.50 | 16.19 | 21.25 | 1.125 | 16 | 2.000 | 123.4 |
| SPF1800-E | 18 | 25.00 | 18.19 | 22.75 | 1.250 | 16 | 2.125 | 130.0 |
| SPF2000-E | 20 | 27.50 | 20.19 | 25.00 | 1.250 | 20 | 2.375 | 171.0 |
| SPF2200-E | 22 | 29.50 | 22.19 | 27.25 | 1.375 | 20 | 2.500 | 189.0 |
| SPF2400-E | 24 | 32.00 | 24.19 | 29.50 | 1.375 | 20 | 2.625 | 234.0 |
| SPF2600-E | 26 | 34.25 | 26.19 | 31.75 | 1.375 | 24 | 2.750 | 270.0 |
| SPF2800-E | 28 | 36.50 | 28.19 | 34.00 | 1.375 | 28 | 2.750 | 296.0 |
| SPF3000-E | 30 | 38.75 | 30.19 | 36.00 | 1.375 | 28 | 2.875 | 350.0 |
| SPF3200-E | 32 | 41.75 | 32.19 | 38.50 | 1.625 | 28 | 3.000 | 396.0 |
| SPF3400-E | 34 | 43.75 | 34.19 | 40.50 | 1.625 | 32 | 3.000 | 440.0 |
| SPF3600-E | 36 | 46.00 | 36.19 | 42.75 | 1.625 | 32 | 3.125 | 511.0 |
| SPF3800-E | 38 | 48.75 | 38.19 | 45.25 | 1.625 | 32 | 3.125 | 579.0 |
| SPF4000-E | 40 | 50.75 | 40.19 | 47.25 | 1.625 | 36 | 3.250 | 625.0 |
| SPF4200-E | 42 | 53.00 | 42.19 | 49.50 | 1.625 | 36 | 3.375 | 689.0 |
| SPF4400-E | 44 | 55.25 | 44.19 | 51.75 | 1.625 | 40 | 3.375 | 746.0 |
| SPF4600-E | 46 | 57.25 | 46.19 | 53.75 | 1.625 | 40 | 3.438 | 799.0 |
| SPF4800-E | 48 | 59.50 | 48.19 | 56.00 | 1.625 | 44 | 3.500 | 857.0 |
| SPF5000-E | 50 | 61.75 | 50.19 | 58.25 | 1.875 | 44 | 3.500 | 886.0 |
| SPF5200-E | 52 | 64.00 | 52.19 | 60.50 | 1.875 | 44 | 3.625 | 992.0 |
| SPF5400-E | 54 | 66.25 | 54.19 | 62.75 | 1.875 | 44 | 3.750 | 1082.0 |
| SPF6000-E | 60 | 73.00 | 60.19 | 69.25 | 1.875 | 52 | 3.875 | 1312.0 |
| SPF6600-E | 66 | 80.00 | 66.19 | 76.00 | 1.875 | 52 | 4.250 | 1735.0 |
| SPF7200-E | 72 | 86.50 | 72.19 | 82.50 | 1.875 | 60 | 4.375 | 2004.0 |

Notes:

- a. All Stainless Steel flanges available in Dual Grade 304/304L or 316/316L. Material conforms to the requirements of AWWA C228 specifications. Other material is available upon request.
- b. Meets ANSI class 150 pattern.
- c. For flanges in smaller sizes see page 4.3.

Pressure Ratings: 275psi at atmospheric temperature.

ALL DIMENSIONS ARE IN INCHES UNLESS OTHERWISE STATED.



AWWA Class “SF” Stainless Steel-Ring Flanges [300 psi]

| API Part Number | Size | O.D. | I.D. | Ø B.H.C. | Ø B.H. | # B.H. | THK | Weight Lbs |
|-----------------|------|-------|-------|----------|--------|--------|-------|------------|
| SPF0400-F | 4 | 10.00 | 4.57 | 7.88 | 0.875 | 8 | 1.130 | 18.4 |
| SPF0500-F | 5 | 11.00 | 5.66 | 9.25 | 0.875 | 8 | 1.210 | 22.3 |
| SPF0600-F | 6 | 12.50 | 6.72 | 10.62 | 0.875 | 12 | 1.310 | 29.7 |
| SPF0800-F | 8 | 15.00 | 8.72 | 13.00 | 1.000 | 12 | 1.310 | 39.9 |
| SPF1000-F | 10 | 17.50 | 10.88 | 15.25 | 1.125 | 16 | 1.500 | 56.0 |
| SPF1200-F | 12 | 20.50 | 12.88 | 17.75 | 1.250 | 16 | 1.630 | 84.9 |
| SPF1400-F | 14 | 23.00 | 14.19 | 20.25 | 1.250 | 20 | 1.940 | 127.0 |
| SPF1600-F | 16 | 25.50 | 16.19 | 22.50 | 1.375 | 20 | 2.140 | 166.0 |
| SPF1800-F | 18 | 28.00 | 18.19 | 24.75 | 1.375 | 24 | 2.250 | 205.0 |
| SPF2000-F | 20 | 30.50 | 20.19 | 27.00 | 1.375 | 24 | 2.330 | 247.0 |
| SPF2200-F | 22 | 33.00 | 22.19 | 29.25 | 1.375 | 24 | 2.500 | 307.0 |
| SPF2400-F | 24 | 36.00 | 24.19 | 32.00 | 1.625 | 24 | 2.690 | 388.0 |
| SPF2600-F | 26 | 38.25 | 26.25 | 34.50 | 1.875 | 28 | 3.000 | 450.0 |
| SPF2800-F | 28 | 40.75 | 28.25 | 37.00 | 1.875 | 28 | 3.130 | 532.0 |
| SPF3000-F | 30 | 43.00 | 30.25 | 39.25 | 1.875 | 28 | 3.150 | 585.0 |
| SPF3200-F | 32 | 45.25 | 32.25 | 41.50 | 1.875 | 28 | 3.250 | 657.0 |
| SPF3400-F | 34 | 47.50 | 34.25 | 43.50 | 1.875 | 28 | 3.380 | 740.0 |
| SPF3600-F | 36 | 50.00 | 36.25 | 46.00 | 2.125 | 32 | 3.460 | 801.0 |
| SPF3800-F | 38 | 52.25 | 38.25 | 48.00 | 2.125 | 32 | 3.500 | 873.0 |
| SPF4000-F | 40 | 54.25 | 40.25 | 50.25 | 2.125 | 36 | 3.630 | 936.0 |
| SPF4200-F | 42 | 57.00 | 42.25 | 52.75 | 2.125 | 36 | 3.810 | 1102.0 |
| SPF4400-F | 44 | 59.25 | 44.25 | 55.00 | 2.125 | 36 | 4.000 | 1236.0 |
| SPF4600-F | 46 | 61.50 | 46.25 | 57.25 | 2.125 | 40 | 4.130 | 1343.0 |
| SPF4800-F | 48 | 65.00 | 48.25 | 60.75 | 2.125 | 40 | 4.500 | 1717.0 |

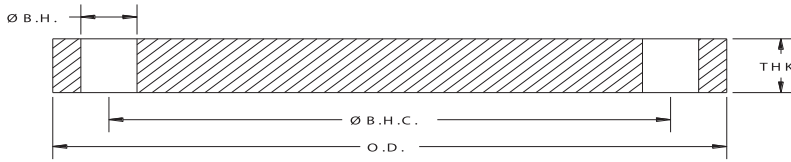
Notes:

a. All Stainless Steel flanges available in Dual Grade 304/304L or 316/316L. Material conforms to the requirements of AWWA C228 specifications. Other material is available upon request.

b. Meets ANSI class 300 pattern.

Pressure Ratings: 300 psi at atmospheric temperature.

ALL DIMENSIONS ARE IN INCHES UNLESS OTHERWISE STATED.



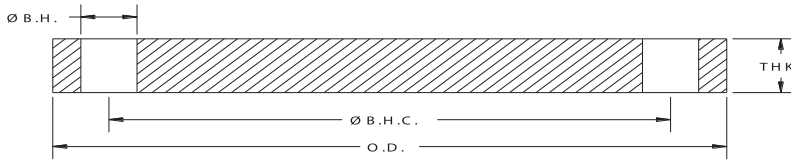
AWWA Class “SA” Stainless Steel Blind Flanges [50 psi]

| API Part Number | Size | O.D. | I.D. | \varnothing B.H.C | \varnothing B.H. | # B.H | THK | Weight lbs |
|-----------------|------|-------|-------|---------------------|--------------------|-------|-------|------------|
| SPFBL0200-A | 2 | 6.00 | BLIND | 4.75 | 0.750 | 4 | 0.500 | 4.0 |
| SPFBL0250-A | 2.5 | 7.00 | BLIND | 5.50 | 0.750 | 4 | 0.500 | 5.5 |
| SPFBL0300-A | 3 | 7.50 | BLIND | 6.00 | 0.750 | 4 | 0.500 | 6.2 |
| SPFBL0350-A | 3.5 | 8.50 | BLIND | 7.00 | 0.750 | 8 | 0.500 | 7.5 |
| SPFBL0400-A | 4 | 9.00 | BLIND | 7.50 | 0.750 | 8 | 0.500 | 9.1 |
| SPFBL0500-A | 5 | 10.00 | BLIND | 8.50 | 0.875 | 8 | 0.500 | 11.0 |
| SPFBL0600-A | 6 | 11.00 | BLIND | 9.50 | 0.875 | 8 | 0.500 | 14.3 |
| SPFBL0800-A | 8 | 13.50 | BLIND | 11.75 | 0.875 | 8 | 0.500 | 20.0 |

Notes:

- a. All Stainless Steel flanges available in Dual Grade 304/304L or 316/316L.. Material conforms to the requirements of AWWA C228 specifications. Other material is available upon request.
- b. Meets ANSI class 150 pattern.
- c. For flanges larger than 8" see AWWA Class "B"
- d. **Pressure Ratings: 275psi at atmospheric temperature.**

ALL DIMENSIONS ARE IN INCHES UNLESS OTHERWISE STATED.



AWWA Class “SB” Stainless Steel Blind Flanges (86 psi)

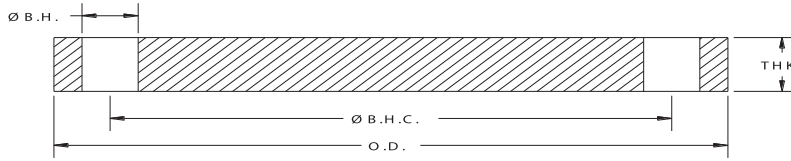
| API Part Number | Size | O.D. | I.D. | Ø B.H.C. | Ø B.H. | # B.H. | THK | Weight Lbs |
|-----------------|------|-------|-------|----------|--------|--------|-------|------------|
| SPFBL0400-B | 4 | 9.00 | BLIND | 7.50 | 0.750 | 8 | 0.625 | 11.0 |
| SPFBL0500-B | 5 | 10.00 | BLIND | 8.50 | 0.875 | 8 | 0.625 | 13.0 |
| SPFBL0600-B | 6 | 11.00 | BLIND | 9.50 | 0.875 | 8 | 0.688 | 18.0 |
| SPFBL0800-B | 8 | 13.50 | BLIND | 11.75 | 0.875 | 8 | 0.688 | 27.0 |
| SPFBL1000-B | 10 | 16.00 | BLIND | 14.25 | 1.000 | 12 | 0.688 | 38.0 |
| SPFBL1200-B | 12 | 19.00 | BLIND | 17.00 | 1.000 | 12 | 0.719 | 56.0 |
| SPFBL1400-B | 14 | 21.00 | BLIND | 18.75 | 1.125 | 12 | 0.791 | 75.0 |
| SPFBL1600-B | 16 | 23.50 | BLIND | 21.25 | 1.125 | 16 | 0.892 | 105.0 |
| SPFBL1800-B | 18 | 25.00 | BLIND | 22.75 | 1.250 | 16 | 0.950 | 126.0 |
| SPFBL2000-B | 20 | 27.50 | BLIND | 25.00 | 1.250 | 20 | 1.040 | 167.0 |
| SPFBL2200-B | 22 | 29.50 | BLIND | 27.25 | 1.375 | 20 | 1.132 | 209.0 |
| SPFBL2400-B | 24 | 32.00 | BLIND | 29.50 | 1.375 | 20 | 1.216 | 267.0 |
| SPFBL2600-B | 26 | 34.25 | BLIND | 31.75 | 1.375 | 24 | 1.307 | 327.0 |
| SPFBL2800-B | 28 | 36.50 | BLIND | 34.00 | 1.375 | 28 | 1.398 | 397.0 |
| SPFBL3000-B | 30 | 38.75 | BLIND | 36.00 | 1.375 | 28 | 1.477 | 475.0 |
| SPFBL3200-B | 32 | 41.75 | BLIND | 38.50 | 1.625 | 28 | 1.581 | 586.0 |
| SPFBL3400-B | 34 | 43.75 | BLIND | 40.50 | 1.625 | 32 | 1.661 | 675.0 |
| SPFBL3600-B | 36 | 46.00 | BLIND | 42.75 | 1.625 | 32 | 1.751 | 790.0 |
| SPFBL3800-B | 38 | 48.75 | BLIND | 45.25 | 1.625 | 32 | 1.853 | 944.0 |
| SPFBL4000-B | 40 | 50.75 | BLIND | 47.25 | 1.625 | 36 | 1.933 | 1066.0 |
| SPFBL4200-B | 42 | 53.00 | BLIND | 49.50 | 1.625 | 36 | 2.023 | 1220.0 |
| SPFBL4400-B | 44 | 55.25 | BLIND | 51.75 | 1.625 | 40 | 2.114 | 1385.0 |
| SPFBL4600-B | 46 | 57.25 | BLIND | 53.75 | 1.625 | 40 | 2.194 | 1547.0 |
| SPFBL4800-B | 48 | 59.50 | BLIND | 56.00 | 1.625 | 44 | 2.285 | 1739.0 |
| SPFBL5000-B | 50 | 61.75 | BLIND | 58.25 | 1.875 | 44 | 2.377 | 1934.0 |
| SPFBL5200-B | 52 | 64.00 | BLIND | 60.50 | 1.875 | 44 | 2.468 | 2163.0 |
| SPFBL5400-B | 54 | 66.25 | BLIND | 62.75 | 1.875 | 44 | 2.559 | 2408.0 |
| SPFBL6000-B | 60 | 73.00 | BLIND | 69.25 | 1.875 | 52 | 2.820 | 3225.0 |
| SPFBL6600-B | 66 | 80.00 | BLIND | 76.00 | 1.875 | 52 | 3.092 | 4272.0 |
| SPFBL7200-B | 72 | 86.50 | BLIND | 82.50 | 1.875 | 60 | 3.353 | 5418.0 |

Notes:

- a. All Stainless Steel flanges available in Dual Grade 304/304L or 316/316L. Material conforms to the requirements of AWWA C228 specifications. Other material is available upon request.
- b. Meets ANSI class 150 pattern.
- c. AWWA recommends the use of Dish Assemblies for sizes above 72". Call API customer service for additional information.

Pressure Ratings: 86psi at atmospheric temperature.

ALL DIMENSIONS ARE IN INCHES UNLESS OTHERWISE STATED.



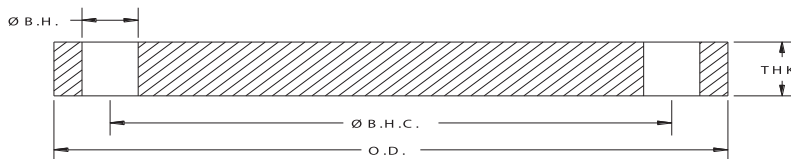
AWWA Class “SD” Stainless Steel Blind Flanges - 1986 Spec’s

| API Part Number | Size | O.D. | I.D. | Ø B.H.C. | Ø B.H. | # B.H. | THK | Weight Lbs |
|-----------------|------|-------|-------|----------|--------|--------|-------|------------|
| SPFBL0400-86 | 4 | 9.00 | BLIND | 7.50 | 0.750 | 8 | 0.625 | 11.0 |
| SPFBL0500-86 | 5 | 10.00 | BLIND | 8.50 | 0.875 | 8 | 0.625 | 13.0 |
| SPFBL0600-86 | 6 | 11.00 | BLIND | 9.50 | 0.875 | 8 | 0.688 | 18.0 |
| SPFBL0800-86 | 8 | 13.50 | BLIND | 11.75 | 0.875 | 8 | 0.688 | 27.0 |
| SPFBL1000-86 | 10 | 16.00 | BLIND | 14.25 | 1.000 | 12 | 0.688 | 38.0 |
| SPFBL1200-86 | 12 | 19.00 | BLIND | 17.00 | 1.000 | 12 | 0.813 | 64.0 |
| SPFBL1400-86 | 14 | 21.00 | BLIND | 18.75 | 1.125 | 12 | 0.938 | 88.0 |
| SPFBL1600-86 | 16 | 23.50 | BLIND | 21.25 | 1.125 | 16 | 1.000 | 118.0 |
| SPFBL1800-86 | 18 | 25.00 | BLIND | 22.75 | 1.250 | 16 | 1.063 | 141.0 |
| SPFBL2000-86 | 20 | 27.50 | BLIND | 25.00 | 1.250 | 20 | 1.125 | 181.0 |
| SPFBL2400-86 | 24 | 32.00 | BLIND | 29.50 | 1.375 | 20 | 1.250 | 273.0 |
| SPFBL3000-86 | 30 | 38.75 | BLIND | 36.00 | 1.375 | 28 | 1.375 | 436.0 |
| SPFBL3600-86 | 36 | 46.00 | BLIND | 42.75 | 1.625 | 32 | 1.625 | 735.0 |
| SPFBL4200-86 | 42 | 53.00 | BLIND | 49.50 | 1.625 | 36 | 1.750 | 1057.0 |
| SPFBL4800-86 | 48 | 59.50 | BLIND | 56.00 | 1.625 | 44 | 1.875 | 1428.0 |
| SPFBL6000-86 | 60 | 73.00 | BLIND | 69.25 | 1.875 | 52 | 2.250 | 2574.0 |

Notes:

- a. All Stainless Steel flanges available in Dual Grade 304/304L or 316/316L. Material conforms to the requirements of AWWA C228 specifications. Other material is available upon request.
- b. Meets ANSI class 150 pattern.
- c. Manufactured to AWWA C207-1986 dimensional specifications.
- d. AWWA recommends the use of Dish Assemblies for sizes above 72". Call API customer service for additional information.

ALL DIMENSIONS ARE IN INCHES UNLESS OTHERWISE STATED.



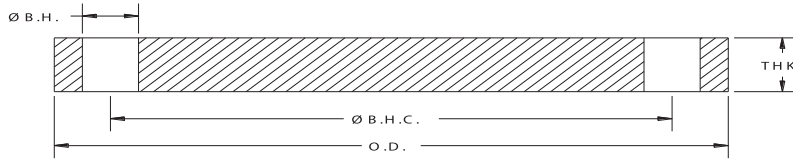
AWWA Class “SD” Stainless Steel Blind Flanges [150-175 psi]

| API Part Number | Size | O.D. | I.D. | Ø B.H.C. | Ø B.H. | # B.H. | THK | Weight Lbs |
|-----------------|------|-------|-------|----------|--------|--------|-------|------------|
| SPFBL0400-D | 4 | 9.00 | BLIND | 7.50 | 0.750 | 8 | 0.625 | 11.0 |
| SPFBL0500-D | 5 | 10.00 | BLIND | 8.50 | 0.875 | 8 | 0.650 | 13.0 |
| SPFBL0600-D | 6 | 11.00 | BLIND | 9.50 | 0.875 | 8 | 0.693 | 18.0 |
| SPFBL0800-D | 8 | 13.50 | BLIND | 11.75 | 0.875 | 8 | 0.813 | 31.0 |
| SPFBL1000-D | 10 | 16.00 | BLIND | 14.25 | 1.000 | 12 | 0.953 | 52.0 |
| SPFBL1200-D | 12 | 19.00 | BLIND | 17.00 | 1.000 | 12 | 1.117 | 87.0 |
| SPFBL1400-D | 14 | 21.00 | BLIND | 18.75 | 1.125 | 12 | 1.133 | 107.0 |
| SPFBL1600-D | 16 | 23.50 | BLIND | 21.25 | 1.125 | 16 | 1.265 | 150.0 |
| SPFBL1800-D | 18 | 25.00 | BLIND | 22.75 | 1.250 | 16 | 1.331 | 178.0 |
| SPFBL2000-D | 20 | 27.50 | BLIND | 25.00 | 1.250 | 20 | 1.448 | 234.0 |
| SPFBL2200-D | 22 | 29.50 | BLIND | 27.25 | 1.375 | 20 | 1.568 | 290.0 |
| SPFBL2400-D | 24 | 32.00 | BLIND | 29.50 | 1.375 | 20 | 1.661 | 365.0 |
| SPFBL2600-D | 26 | 34.25 | BLIND | 31.75 | 1.375 | 24 | 1.786 | 447.0 |
| SPFBL2800-D | 28 | 36.50 | BLIND | 34.00 | 1.375 | 28 | 1.906 | 542.0 |
| SPFBL3000-D | 30 | 38.75 | BLIND | 36.00 | 1.375 | 28 | 2.008 | 647.0 |
| SPFBL3200-D | 32 | 41.75 | BLIND | 38.50 | 1.625 | 28 | 2.150 | 798.0 |
| SPFBL3400-D | 34 | 43.75 | BLIND | 40.50 | 1.625 | 32 | 2.252 | 916.0 |
| SPFBL3600-D | 36 | 46.00 | BLIND | 42.75 | 1.625 | 32 | 2.370 | 1071.0 |
| SPFBL3800-D | 38 | 48.75 | BLIND | 45.25 | 1.625 | 32 | 2.506 | 1277.0 |
| SPFBL4000-D | 40 | 50.75 | BLIND | 47.25 | 1.625 | 36 | 2.609 | 1439.0 |
| SPFBL4200-D | 42 | 53.00 | BLIND | 49.50 | 1.625 | 36 | 2.729 | 1648.0 |
| SPFBL4400-D | 44 | 55.25 | BLIND | 51.75 | 1.625 | 40 | 2.849 | 1867.0 |
| SPFBL4600-D | 46 | 57.25 | BLIND | 53.75 | 1.625 | 40 | 2.952 | 2082.0 |
| SPFBL4800-D | 48 | 59.50 | BLIND | 56.00 | 1.625 | 44 | 3.072 | 2340.0 |
| SPFBL5000-D | 50 | 61.75 | BLIND | 58.25 | 1.875 | 44 | 3.196 | 2600.0 |
| SPFBL5200-D | 52 | 64.00 | BLIND | 60.50 | 1.875 | 44 | 3.315 | 2906.0 |
| SPFBL5400-D | 54 | 66.25 | BLIND | 62.75 | 1.875 | 44 | 3.435 | 3235.0 |
| SPFBL6000-D | 60 | 73.00 | BLIND | 69.25 | 1.875 | 52 | 3.779 | 4328.0 |
| SPFBL6600-D | 66 | 80.00 | BLIND | 76.00 | 1.875 | 52 | 4.136 | 5719.0 |

Notes:

- a. All Stainless Steel flanges available in Dual Grade 304/304L or 316/316L. Material conforms to the requirements of AWWA C228 specifications. Other material is available upon request.
- b. Meets ANSI class 150 pattern.
- c. AWWA recommends the use of Dish Assemblies for sizes above 72". Call API customer service for additional information.

ALL DIMENSIONS ARE IN INCHES UNLESS OTHERWISE STATED.



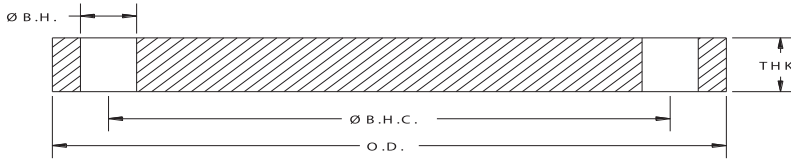
AWWA Class “SE” Stainless Steel Blind Flanges [275psi]

| API Part Number | Size | O.D. | I.D. | Ø B.H.C. | Ø B.H. | # B.H. | THK | Weight Lbs |
|-----------------|------|-------|-------|----------|--------|--------|-------|------------|
| SPFBL0400-E | 4 | 9.00 | BLIND | 7.50 | 0.750 | 8 | 1.125 | 19.0 |
| SPFBL0500-E | 5 | 10.00 | BLIND | 8.50 | 0.875 | 8 | 1.188 | 24.0 |
| SPFBL0600-E | 6 | 11.00 | BLIND | 9.50 | 0.875 | 8 | 1.313 | 33.0 |
| SPFBL0800-E | 8 | 13.50 | BLIND | 11.75 | 0.875 | 8 | 1.500 | 58.0 |
| SPFBL1000-E | 10 | 16.00 | BLIND | 14.25 | 1.000 | 12 | 1.563 | 84.0 |
| SPFBL1200-E | 12 | 19.00 | BLIND | 17.00 | 1.000 | 12 | 1.750 | 135.0 |
| SPFBL1400-E | 14 | 21.00 | BLIND | 18.75 | 1.125 | 12 | 1.875 | 176.0 |
| SPFBL1600-E | 16 | 23.50 | BLIND | 21.25 | 1.125 | 16 | 2.000 | 234.0 |
| SPFBL1800-E | 18 | 25.00 | BLIND | 22.75 | 1.250 | 16 | 2.125 | 283.0 |
| SPFBL2000-E | 20 | 27.50 | BLIND | 25.00 | 1.250 | 20 | 2.375 | 382.0 |
| SPFBL2200-E | 22 | 29.50 | BLIND | 27.25 | 1.375 | 20 | 2.500 | 462.0 |
| SPFBL2400-E | 24 | 32.00 | BLIND | 29.50 | 1.375 | 20 | 2.625 | 575.0 |
| SPFBL2600-E | 26 | 34.25 | BLIND | 31.75 | 1.375 | 24 | 2.750 | 689.0 |
| SPFBL2800-E | 28 | 36.50 | BLIND | 34.00 | 1.375 | 28 | 2.750 | 782.0 |
| SPFBL3000-E | 30 | 38.75 | BLIND | 36.00 | 1.375 | 28 | 2.875 | 926.0 |
| SPFBL3200-E | 32 | 41.75 | BLIND | 38.50 | 1.625 | 28 | 3.000 | 1113.0 |
| SPFBL3400-E | 34 | 43.75 | BLIND | 40.50 | 1.625 | 32 | 3.050 | 1241.0 |
| SPFBL3600-E | 36 | 46.00 | BLIND | 42.75 | 1.625 | 32 | 3.209 | 1450.0 |
| SPFBL3800-E | 38 | 48.75 | BLIND | 45.25 | 1.625 | 32 | 3.394 | 1730.0 |
| SPFBL4000-E | 40 | 50.75 | BLIND | 47.25 | 1.625 | 36 | 3.533 | 1949.0 |
| SPFBL4200-E | 42 | 53.00 | BLIND | 49.50 | 1.625 | 36 | 3.695 | 2230.0 |
| SPFBL4400-E | 44 | 55.25 | BLIND | 51.75 | 1.625 | 40 | 3.857 | 2528.0 |
| SPFBL4600-E | 46 | 57.25 | BLIND | 53.75 | 1.625 | 40 | 3.997 | 2819.0 |
| SPFBL4800-E | 48 | 59.50 | BLIND | 56.00 | 1.625 | 44 | 4.159 | 3167.0 |
| SPFBL5000-E | 50 | 61.75 | BLIND | 58.25 | 1.875 | 44 | 4.327 | 3520.0 |
| SPFBL5200-E | 52 | 64.00 | BLIND | 60.50 | 1.875 | 44 | 4.489 | 3935.0 |
| SPFBL5400-E | 54 | 66.25 | BLIND | 62.75 | 1.875 | 44 | 4.651 | 4380.0 |
| SPFBL6000-E | 60 | 73.00 | BLIND | 69.25 | 1.875 | 52 | 5.116 | 5855.0 |
| SPFBL6600-E | 66 | 80.00 | BLIND | 76.00 | 1.875 | 52 | 5.601 | 7745.0 |
| SPFBL7200-E | 72 | 86.50 | BLIND | 82.50 | 1.875 | 60 | 6.066 | 9810.0 |

Notes:

- a. All Stainless Steel flanges available in Dual Grade 304/304L or 316/316L. Material conforms to the requirements of AWWA C228 specifications. Other material is available upon request.
- b. Meets ANSI class 150 pattern.
- c. AWWA recommends the use of Dish Assemblies for sizes above 72". Call API customer service for additional information.

ALL DIMENSIONS ARE IN INCHES UNLESS OTHERWISE STATED.



AWWA Class “SF” Stainless Steel Blind Flanges [300 psi]

| API Part Number | Size | O.D. | I.D. | Ø B.H.C. | Ø B.H. | # B.H. | THK | Weight Lbs |
|-----------------|------|-------|-------|----------|--------|--------|-------|------------|
| SPFBL0400-F | 4 | 10.00 | BLIND | 7.88 | 0.875 | 8 | 1.130 | 23.0 |
| SPFBL0500-F | 5 | 11.00 | BLIND | 9.25 | 0.875 | 8 | 1.210 | 31.0 |
| SPFBL0600-F | 6 | 12.50 | BLIND | 10.62 | 0.875 | 12 | 1.310 | 43.0 |
| SPFBL0800-F | 8 | 15.00 | BLIND | 13.00 | 1.000 | 12 | 1.310 | 62.0 |
| SPFBL1000-F | 10 | 17.50 | BLIND | 15.25 | 1.125 | 16 | 1.500 | 96.0 |
| SPFBL1200-F | 12 | 20.50 | BLIND | 17.75 | 1.250 | 16 | 1.630 | 143.0 |
| SPFBL1400-F | 14 | 23.00 | BLIND | 20.25 | 1.250 | 20 | 1.940 | 214.0 |
| SPFBL1600-F | 16 | 25.50 | BLIND | 22.50 | 1.375 | 20 | 2.140 | 291.0 |
| SPFBL1800-F | 18 | 28.00 | BLIND | 24.75 | 1.375 | 24 | 2.250 | 369.0 |
| SPFBL2000-F | 20 | 30.50 | BLIND | 27.00 | 1.375 | 24 | 2.330 | 458.0 |
| SPFBL2200-F | 22 | 33.00 | BLIND | 29.25 | 1.375 | 24 | 2.500 | 580.0 |
| SPFBL2400-F | 24 | 36.00 | BLIND | 32.00 | 1.625 | 24 | 2.690 | 737.0 |
| SPFBL2600-F | 26 | 38.25 | BLIND | 34.50 | 1.875 | 28 | 3.000 | 910.0 |
| SPFBL2800-F | 28 | 40.75 | BLIND | 37.00 | 1.875 | 28 | 3.130 | 1087.0 |
| SPFBL3000-F | 30 | 43.00 | BLIND | 39.25 | 1.875 | 28 | 3.166 | 1232.0 |
| SPFBL3200-F | 32 | 45.25 | BLIND | 41.50 | 1.875 | 28 | 3.332 | 1444.0 |
| SPFBL3400-F | 34 | 47.50 | BLIND | 43.50 | 1.875 | 28 | 3.475 | 1667.0 |
| SPFBL3600-F | 36 | 50.00 | BLIND | 46.00 | 2.125 | 32 | 3.671 | 1923.0 |
| SPFBL3800-F | 38 | 52.25 | BLIND | 48.00 | 2.125 | 32 | 3.815 | 2193.0 |
| SPFBL4000-F | 40 | 54.25 | BLIND | 50.25 | 2.125 | 36 | 3.982 | 2462.0 |
| SPFBL4200-F | 42 | 57.00 | BLIND | 52.75 | 2.125 | 36 | 4.171 | 2863.0 |
| SPFBL4400-F | 44 | 59.25 | BLIND | 55.00 | 2.125 | 36 | 4.338 | 3230.0 |
| SPFBL4600-F | 46 | 61.50 | BLIND | 57.25 | 2.125 | 40 | 4.505 | 3608.0 |
| SPFBL4800-F | 48 | 65.00 | BLIND | 60.75 | 2.125 | 40 | 4.781 | 4300.0 |

Notes:

a. All Stainless Steel flanges available in Dual Grade 304/304L or 316/316L. Material conforms to the requirements of AWWA C228 specifications. Other material is available upon request.

b. Meets ANSI class 300 pattern.

Pressure Ratings: 300psi at atmospheric temperature.

ALL DIMENSIONS ARE IN INCHES UNLESS OTHERWISE STATED.