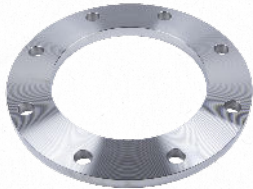


VISIT [APIINT.COM](http://APIINT.COM) FOR MORE INFORMATION.

## **YOUR SOURCE FOR PIPE FITTINGS & CUSTOM SOLUTIONS**



### **FLANGES**

Meet wide variety of standards (ANSI, ASTM, AWWA, BS, DIN and JIS)

Broad range of types, sizes, materials (100% Domestic, Buy America & Imported) and accessories, like gaskets and flange adapters



### **VALVES**

Variety of gear and lever operated butterfly valves, check valves and pressure relief valves, including accessories like valve extensions



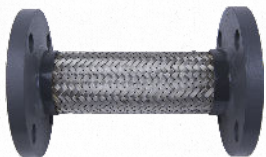
### **FITTINGS & ACCESSORIES**

Large inventory of grooved fittings (KLAMPz), threaded couplings, pipe nipples, elbows, pump motor brackets, rain caps and weld cones



### **EXPANSION JOINTS**

Multiple sizes of flanged and union expansion joints, along with accessories like control units and split retaining rings



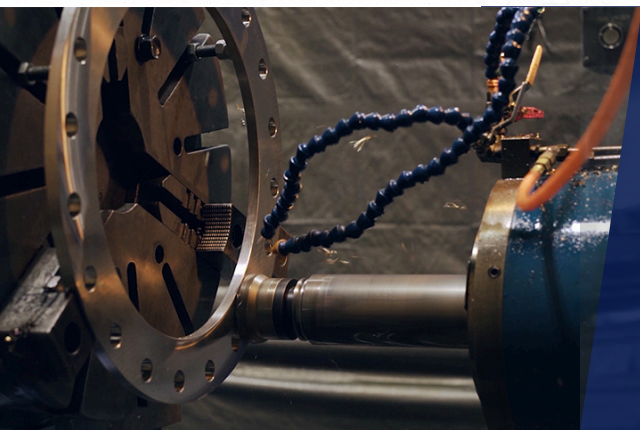
### **PUMP CONNECTORS**

Flanged and threaded pump connectors



### **CUSTOM PARTS**

Diverse selection of custom parts and assemblies manufactured and stocked for OEM Manufacturers in the Agriculture, Exhaust, HVAC & Water Works markets



### **MACHINING & MANUFACTURING**

- ▶ Experience with a wide variety of products, sizes, materials and specifications utilizing Buy America, AIS or Import materials.
- ▶ Short lead times that allow you to get products to customers when they need them.
- ▶ Support fast turn modifications to stock items.
- ▶ Quality control technicians verify that all products meet customer requirements.

# ANSI/ASME FLANGES

We stock a wide range of ANSI/ASME forged flanges built to meet B16.47 and B16.5 standards, covering pressure classes 150 through 300. Available in carbon steel and stainless steel, our ANSI/ASME flanges come in both raised-face and flat-face options. Designed for strength, reliability, and precise fit, they're ready for industrial piping, maintenance, and repair projects.

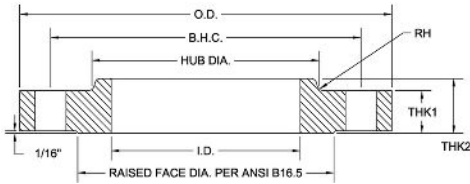
## WHAT WE STOCK

- CLASS 150 FORGED FLAT FACE SLIP-ON
- CLASS 150 FORGED RAISED FACE SLIP-ON
- CLASS 150 FORGED RAISED FACE BLIND
- CLASS 300 FORGED RAISED FACE SLIP-ON
- CLASS 300 FORGED RAISED FACE BLIND



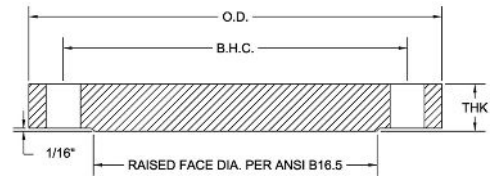
## FLAT-FACE / RAISED-FACE SLIP-ON RING

### 2-24"



## RAISED-FACE BLIND

### .5-24"



## COMMON APPLICATIONS

- OIL AND GAS PIPING SYSTEMS
- PETROCHEMICAL PLANTS
- REFINERIES
- POWER GENERATION FACILITIES
- HVAC SYSTEMS
- INDUSTRIAL PROCESS PIPING
- WATER TREATMENT AND DISTRIBUTION
- SHIPBUILDING AND MARINE APPLICATIONS

## MATERIALS

- STAINLESS STEEL: AVAILABLE IN DUAL-GRADE 304/304L OR 316/316L. MEETS THE DIMENSIONS AND TOLERANCES UNDER ANSI B16.5 ASTM A182 SPECIFICATIONS.
- MILD STEEL: ASTM-A105 M. THE MATERIAL MEETS ASTM A105 REQUIREMENTS. DIMENSIONS AND TOLERANCES PER ANSI B16.5. THESE FLANGES ARE PAINTED BLACK.

## MACHINING CAPABILITIES

- WE CAN MODIFY ANSI/ASME FLANGES IN-HOUSE TO FIT YOUR PROJECT NEEDS. SERVICES INCLUDE CUSTOM DRILLING, BORING, FACING, AND MORE.
- OUR MACHINE SHOP HELPS GET PARTS OUT FASTER AND ENSURES THEY MEET YOUR EXACT PROJECT REQUIREMENTS.

**QUESTIONS? VISIT [APIINT.COM](http://APIINT.COM) OR CALL (503)692-3800**