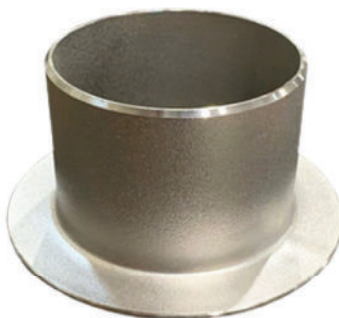


# Backing Flanges & Stub Ends

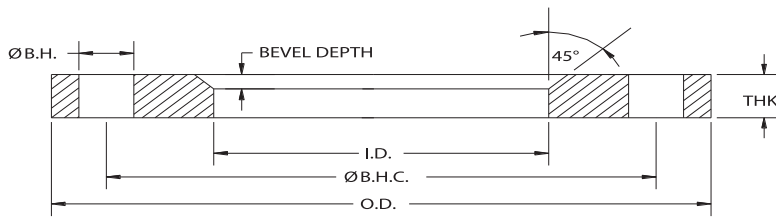
Domestic & Import



# Backing Flanges

## PART NUMBER STRUCTURE

Part Number Section	Options
Type	<b>Backing Flange for Angle Face Ring:</b> ABF = Ductile Iron (Painted) SABF = Stainless Steel  <b>Backing Flange for Stub End</b> BF = Ductile Iron (Painted) GBF = Ductile Iron (Hot Dip Galvanized)
Size	XXXX = Size in inches going out 2 decimal places
Other	16 = O.D. Tube Size DI = Ductile Iron



## DUCTILE IRON BACKING FLANGES FOR ANGLE FACE RINGS

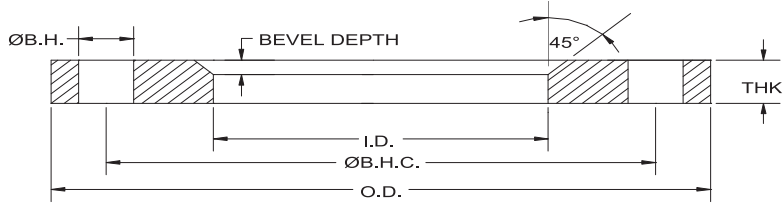
API Part Number	Size	O.D.	I.D.	Ø B.H.C.	Ø B.H.	# B.H	THK	Bevel Depth	Weight lbs
ABF0050-DI	0.5	3.50	1.25	2.38	0.630	4	0.500	0.250	0.9
ABF0075-DI	0.75	3.88	1.44	2.75	0.630	4	0.500	0.250	1.1
ABF0100-DI	1	4.25	1.69	3.13	0.630	4	0.500	0.250	1.3
ABF0125-DI	1.25	4.63	2.06	3.50	0.630	4	0.500	0.250	1.5
ABF0150-DI	1.5	5.00	2.25	3.88	0.630	4	0.500	0.250	1.9
ABF0200-DI	2	6.00	2.88	4.75	0.750	4	0.500	0.250	2.5
ABF0250-DI	2.5	7.00	3.38	5.50	0.750	4	0.500	0.250	3.5
ABF0300-DI	3	7.50	4.00	6.00	0.750	4	0.500	0.250	4.0
ABF0400-DI	4	9.00	5.00	7.50	0.750	8	0.562	0.250	6.5
ABF0600-DI	6	11.00	7.25	9.50	0.875	8	0.630	0.250	8.0
ABF0800-DI	8	13.50	9.25	11.75	0.875	8	0.630	0.250	11.5
ABF1000-DI	10	16.00	11.44	14.25	1.000	12	0.630	0.312	15.0
ABF1200-DI	12	19.00	13.63	17.00	1.000	12	0.750	0.312	26.0
ABF1400-DI	14	21.00	14.88	18.75	1.125	12	0.750	0.312	26.5
ABF1600-DI	16	23.50	16.88	21.25	1.125	16	0.750	0.312	37.0
ABF1800-DI	18	25.00	18.88	22.75	1.250	16	0.880	0.375	42.0
ABF2000-DI	20	27.50	20.88	25.00	1.250	20	0.880	0.375	51.0
ABF2400-DI	24	32.00	24.88	29.50	1.375	20	1.000	0.375	76.0
ABF3000-DI	30	38.75	30.88	36.00	1.375	28	1.000	0.500	104.0
ABF3600-DI	36	46.00	36.88	42.75	1.625	32	1.250	0.500	166.0
ABF4200-DI	42	53.00	42.91	49.50	1.625	36	1.250	0.500	208.0
ABF4800-DI	48	59.50	48.91	56.00	1.625	44	1.250	0.500	246.0

Notes:

- a. Material conforms to ASTM A536.
- b. Meets ASME/ANSI Class 150 bolt pattern.

ALL DIMENSIONS ARE IN INCHES UNLESS OTHERWISE STATED.

DC# 0825



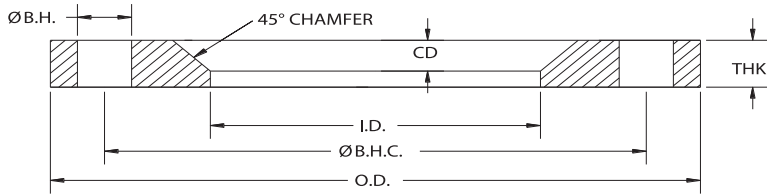
**STAINLESS STEEL BACKING FLANGES FOR ANGLE FACE RINGS**

API Part Number	Size	O.D.	I.D.	Ø B.H.C.	Ø B.H.	# B.H	THK	Bevel Depth	Weight lbs
SABF0050	0.5	3.50	1.25	2.38	0.630	4	0.500	0.250	0.9
SABF0075	0.75	3.88	1.44	2.75	0.630	4	0.500	0.250	1.1
SABF0100	1	4.25	1.69	3.13	0.630	4	0.500	0.250	1.3
SABF0125	1.25	4.63	2.06	3.50	0.630	4	0.500	0.250	1.5
SABF0150	1.5	5.00	2.25	3.88	0.630	4	0.500	0.250	1.9
SABF0200	2	6.00	2.88	4.75	0.750	4	0.500	0.250	2.5
SABF0250	2.5	7.00	3.38	5.50	0.750	4	0.500	0.250	3.5
SABF0300	3	7.50	4.00	6.00	0.750	4	0.500	0.250	4.0
SABF0400	4	9.00	5.00	7.50	0.750	8	0.562	0.250	6.0
SABF0500	5	10.00	6.06	8.50	0.875	8	0.500	0.250	6.5
SABF0600	6	11.00	7.25	9.50	0.875	8	0.630	0.250	8.0
SABF0800	8	13.50	9.25	11.75	0.875	8	0.630	0.250	11.5
SABF1000	10	16.00	11.44	14.25	1.000	12	0.630	0.312	15.0
SABF1200	12	19.00	13.63	17.00	1.000	12	0.630	0.312	26.0
SABF1400	14	21.00	14.88	18.75	1.125	12	0.630	0.312	26.5
SABF1600	16	23.50	16.88	21.25	1.125	16	0.750	0.312	37.0
SABF1800	18	25.00	18.88	22.75	1.250	16	0.880	0.375	42.0
SABF2000	20	27.50	20.88	25.00	1.250	20	0.880	0.375	51.0
SABF2400	24	32.00	24.88	29.50	1.375	20	1.000	0.375	76.0
SABF3000	30	38.75	30.88	36.00	1.375	28	1.000	0.500	104.0
SABF3600	36	46.00	36.88	42.75	1.625	32	1.250	0.500	166.0
SABF4200	42	53.00	42.91	49.50	1.625	36	1.250	0.500	220.0
SABF4800	48	59.50	48.91	56.00	1.625	44	1.250	0.500	262.0

Note:

- a. All Stainless Steel flanges available in Dual Grade 304/304L or 316/316L.
- b. Meets ASME/ANSI Class 150 bolt pattern.

**ALL DIMENSIONS ARE IN INCHES UNLESS OTHERWISE STATED.**



**DUCTILE IRON BACKING FLANGES FOR STUB ENDS**

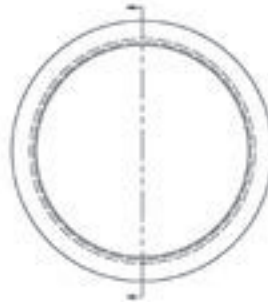
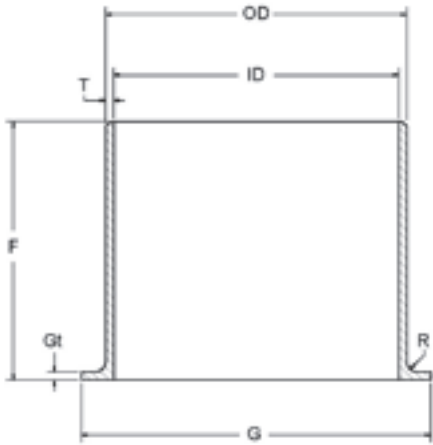
API Part Number	Size	O.D.	I.D.	Ø B.H.C.	Ø B.H.	# B.H	THK	Bevel Depth	Weight lbs
(G)BF0050-DI	0.5	3.50	0.91	2.38	0.630	4	0.438	0.130	1.2
(G)BF0075-DI	0.75	3.88	1.11	2.75	0.630	4	0.500	0.130	1.3
(G)BF0100-DI	1	4.25	1.38	3.13	0.630	4	0.500	0.130	1.6
(G)BF0125-DI	1.25	4.63	1.72	3.50	0.630	4	0.500	0.190	1.9
(G)BF0150-DI	1.5	5.00	1.97	3.88	0.630	4	0.500	0.250	2.6
(G)BF0200-DI	2	6.00	2.46	4.75	0.750	4	0.500	0.320	2.7
(G)BF0250-DI	2.5	7.00	2.97	5.50	0.750	4	0.500	0.320	2.8
(G)BF0300-DI	3	7.50	3.60	6.00	0.750	4	0.500	0.380	4.5
(G)BF0400-DI	4	9.00	4.60	7.50	0.750	8	0.563	0.440	6.1
(G)BF0500-DI	5	10.00	5.69	8.50	0.875	8	0.630	0.440	7.2
(G)BF0600-DI	6	11.00	6.75	9.50	0.875	8	0.630	0.440	8.4
(G)BF0800-DI	8	13.50	8.75	11.75	0.875	8	0.630	0.440	12.8
(G)BF1000-DI	10	16.00	10.92	14.25	1.000	12	0.630	0.440	14.2
(G)BF1200-DI	12	19.00	12.92	17.00	1.000	12	0.750	0.440	26.8
(G)BF1400-DI	14	21.00	14.19	18.75	1.125	12	0.750	0.440	38.0
(G)BF1600-DI	16	23.50	16.19	21.25	1.125	16	0.750	0.440	39.0
(G)BF1800-DI	18	25.00	18.20	22.75	1.250	16	0.880	0.440	47.0
(G)BF2000-DI	20	27.50	20.25	25.00	1.250	20	0.880	0.440	57.0
(G)BF2400-DI	24	32.00	24.25	29.50	1.375	20	1.000	0.440	79.0
(G)BF3000-DI	30	38.75	30.38	36.00	1.375	28	1.000	0.440	117.0
(G)BF3600-DI	36	46.00	36.50	42.75	1.625	32	1.125	0.440	181.0

Notes:

- a. Material conforms to ASTM A536.
- b. Meets ASME/ANSI Class 150 bolt pattern.
- c. Available with a paint or hot dip galvanized coating.

**ALL DIMENSIONS ARE IN INCHES UNLESS OTHERWISE STATED.**

# Stub Ends



Size	Outside Diameter (O.D.)		Inside Diameter (I.D.)		Wall thickness (T)		Diameter (G)		Thickness (Gt)		Length (F)		Radius (R)											
	Std		Std		Std		Std		Std		Std		Min	Max										
	Min	Max	Min	Max	Min	Max	Min	Max	Min	Max	Min	Max												
1	1.315		1.097		0.109		2.000		0.109		2		0.059	0.157										
	1.283	1.346	1.067	1.126	0.098	0.122	1.969	2.031	0.098	0.165	1.941	2.059												
1.5	1.902		1.683		0.109		2.874		0.109		2				0.079	0.197								
	1.871	1.933	1.654	1.713	0.098	0.122	2.843	2.906	0.098	0.165	1.941	2.059												
2	2.374		2.156		0.109		3.626		0.109		2.5						0.079	0.197						
	2.343	2.421	2.126	2.201	0.098	0.122	3.594	3.657	0.098	0.165	2.441	2.559												
2.5	2.874		2.634		0.120		4.106		0.120		2.5								0.079	0.197				
	2.843	2.921	2.602	2.681	0.106	0.134	4.075	4.138	0.106	0.177	2.441	2.559												
3	3.500		3.260		0.120		5.000		0.122		2.5										0.079	0.197		
	3.469	3.547	3.197	3.323	0.106	0.134	4.969	5.031	0.106	0.177	2.441	2.559												
4	4.500		4.260		0.120		6.189		0.120		3												0.079	0.197
	4.469	4.547	4.197	4.323	0.106	0.134	6.157	6.220	0.106	0.177	2.941	3.059												
5	5.563		5.295		0.134		7.315		0.134		3		0.079	0.197										
	5.531	5.622	5.232	5.358	0.118	0.150	7.283	7.349	0.118	0.193	2.941	3.059												
6	6.626		6.358		0.134		8.500		0.134		3.5				0.079	0.197								
	6.594	6.685	6.295	6.421	0.118	0.150	8.469	8.531	0.118	0.193	3.441	3.559												
8	8.626		8.330		0.148		10.626		0.148		4						0.079	0.197						
	8.594	8.720	8.268	8.390	0.130	0.165	10.591	10.660	0.131	0.204	3.909	4.091												
10	10.752		10.422		0.1649		12.752		0.165		5								0.079	0.197				
	10.721	10.850	10.300	10.540	0.146	0.185	12.721	12.78	0.146	0.224	4.909	5.091												
12	12.752		12.392		0.180		15.000		0.180		6										0.079	0.197		
	12.721	12.850	12.271	12.510	0.157	0.201	14.971	15.030	0.157	0.236	5.909	6.091												

## PART NUMBER STRUCTURE

Part Number Section	Options
Category	SE = Stub End
Size	XXXX = Size in inches going out 2 decimal places
Type	C = Type C
Schedule	10S = Schedule 10
Material	304L = 304L Stainless Steel
Example	SE0100-C-10S-304L = 1" Stub End, Type C, Schedule 10, 304L Stainless Steel

Notes:

- a. Product Specification For Lap Joint Type C MSS SP-43 Schedule 10S. Other Types, Schedules, and sizes available upon request.
- b. Standard material is 304L Stainless Steel, but available in other materials on request.

**ALL DIMENSIONS ARE IN INCHES UNLESS OTHERWISE STATED.**