

VISIT APIINT.COM FOR MORE INFORMATION.

YOUR SOURCE FOR PIPE FITTINGS & CUSTOM SOLUTIONS

FLANGES

Specialize In:

AWWA (C207 & C228)

ANSI/ASME (B16.5/B16.47)

Support:

DIN (EN 1092-1)

JIS & BS

A broad range of types, sizes, materials (100% Domestic/AIS & Imported), and accessories, like gaskets and flange adapters.



CUSTOM SOLUTIONS

A diverse selection of custom parts and assemblies manufactured and stocked for OEM Manufacturers in the Water Works, Exhaust, HVAC, Agriculture markets.

ADDITIONAL PRODUCTS



FITTINGS & ACCESSORIES

Large inventory of grooved fittings (KLAMPz), threaded couplings, pipe nipples, elbows, pump motor brackets, rain caps and weld cones.



PUMP CONNECTORS

Flanged and threaded pump connectors.



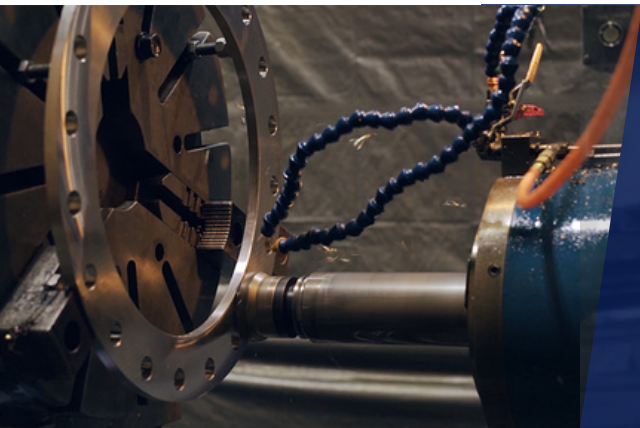
EXPANSION JOINTS

Multiple sizes of flanged and union expansion joints, along with accessories like control units and split retaining rings.



VALVE ACCESSORIES

We stock valve extensions for flow control valves. These flow control accessories are ideal for industrial use.



MACHINING & MANUFACTURING

- ▶ Experience with a wide variety of products, sizes, materials and specifications utilizing Buy America, AIS or Import materials.
- ▶ Short lead times that allow you to get products to customers when they need them.
- ▶ Support fast turn modifications to stock items.
- ▶ Quality control technicians verify that all products meet customer requirements.

ANSI/ASME FLANGES

We stock a wide range of ANSI/ASME forged flanges built to meet B16.47 and B16.5 standards, covering pressure classes 150 through 300. Available in carbon steel and stainless steel, our ANSI/ASME flanges come in both raised-face and flat-face options. Designed for strength, reliability, and precise fit, they're ready for industrial piping, maintenance, and repair projects.

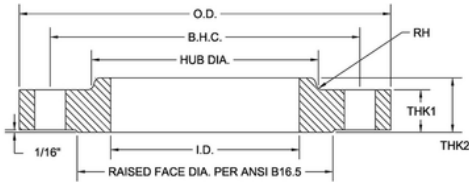
WHAT WE STOCK

- Class 150 Forged Flat Face Slip-on
- Class 150 Forged Raised Face Slip-on
- Class 150 Forged Raised Face Blind
- Class 300 Forged Raised Face Slip-on
- Class 300 Forged Raised Face Blind



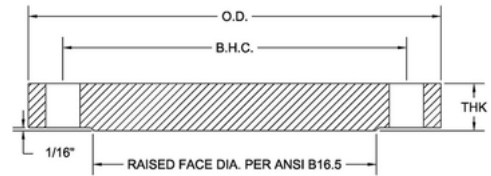
FLAT-FACE / RAISED-FACE SLIP-ON RING

1.5-24"



RAISED-FACE BLIND

.5-24"



COMMON APPLICATIONS

- Power Generation Facilities
- Data Centers
- Agriculture and Irrigation
- HVAC Systems
- Industrial Process Piping
- Food & Beverage Processing
- Water Treatment and Distribution
- Shipbuilding and Marine Applications
- Compressed air/process piping

MATERIALS

- Stainless Steel: available in dual-grade 304/304L or 316/316L. Meets the dimensions and tolerances under ANSI B16.5 ASTM A182 specifications.
- Mild Steel: ASTM-A105 M. The material meets ASTM A105 requirements. Dimensions and tolerances per ANSI B16.5. These flanges are painted black.

MACHINING CAPABILITIES

- We can modify ansi/asme flanges in-house to fit your project needs. Services include custom drilling, boring, facing, and more.
- Our machine shop helps get parts out faster and ensures they meet your exact project requirements.

QUESTIONS? VISIT APIINT.COM OR CALL (503)692-3800