

VISIT APIINT.COM FOR MORE INFORMATION.

YOUR SOURCE FOR PIPE FITTINGS & CUSTOM SOLUTIONS

FLANGES

Specialize In:

AWWA (C207 & C228)

ANSI/ASME (B16.5/B16.47)

Support:

DIN (EN 1092-1)

JIS & BS

A broad range of types, sizes, materials (100% Domestic/AIS & Imported), and accessories, like gaskets and flange adapters.



CUSTOM SOLUTIONS

A diverse selection of custom parts and assemblies manufactured and stocked for OEM Manufacturers in the Water Works, Exhaust, HVAC, Agriculture markets.

ADDITIONAL PRODUCTS



FITTINGS & ACCESSORIES

Large inventory of grooved fittings (KLAMPz), threaded couplings, pipe nipples, elbows, pump motor brackets, rain caps and weld cones.



PUMP CONNECTORS

Flanged and threaded pump connectors.



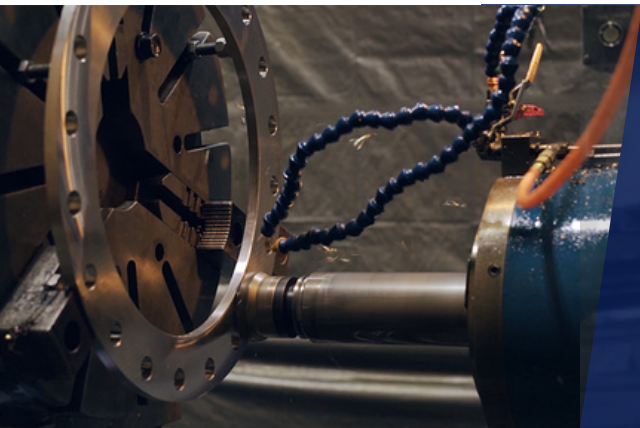
EXPANSION JOINTS

Multiple sizes of flanged and union expansion joints, along with accessories like control units and split retaining rings.



VALVE ACCESSORIES

We stock valve extensions for flow control valves. These flow control accessories are ideal for industrial use.



MACHINING & MANUFACTURING

- ▶ Experience with a wide variety of products, sizes, materials and specifications utilizing Buy America, AIS or Import materials.
- ▶ Short lead times that allow you to get products to customers when they need them.
- ▶ Support fast turn modifications to stock items.
- ▶ Quality control technicians verify that all products meet customer requirements.

FLANGES

We manufacture standard and custom flanges to meet the highest quality standards, including AWWA and ANSI/ASME specifications. Our flanges are developed for Agriculture, Waterworks, HVAC, Exhaust, and other industries. Find flange options, including Domestic/American-made AIS and imported materials, such as steel, stainless steel, aluminum, and ductile iron.

WHAT WE STOCK

- AWWA C207 & C228 Flanges
- 1/2" & 5/8" Thick Light Weight Flanges
- ANSI/ASME Forged Flanges
- Exhaust Flanges
- Backing Flanges
- Plate Flanges
- Custom Machined Flanges



AWWA FLANGES (C207 & C228)

- Class A, B, D, E, F
- Carbon Steel, Stainless Steel, AIS, and Import Materials
- Slip-on Ring
- Blind
- Hub Ring



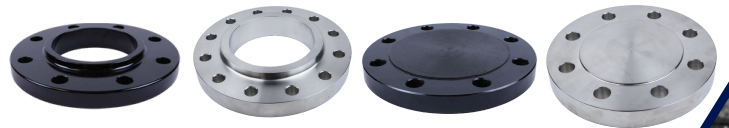
1/2" & 5/8" THICK LIGHT WEIGHT FLANGES

- ANSI Class 150 pattern specifications and in standard dimensions
- Carbon Steel and Stainless Steel
- Slip-on Ring
- Blind



ANSI/ASME FORGED FLANGES

- Forged Carbon (Painted Black) and Forged Stainless Steel
- ASME Class 150 Raised/Flat Face Slip-on, Weld-neck, and Blind
- ASME Class 300 Raised Face Slip-on, Weld-neck, and Blind



EXHAUST FLANGES

- Carbon Steel and Stainless Steel
- Round and Square Exhaust Flange
 - Caterpillar
 - Cummins
 - Detroit
 - Mitsubishi



BACKING FLANGES

- Galvanized Ductile Iron, Ductile Iron, and Stainless Steel
- Ductile Iron Backing Flange For Stub Ends
- Stainless Steel Baking Flange For Angle Face Rings



PLATE FLANGES

- ANSI Class 150 Slip-on & Blind
- Butterfly Valve Adapter (4020)

