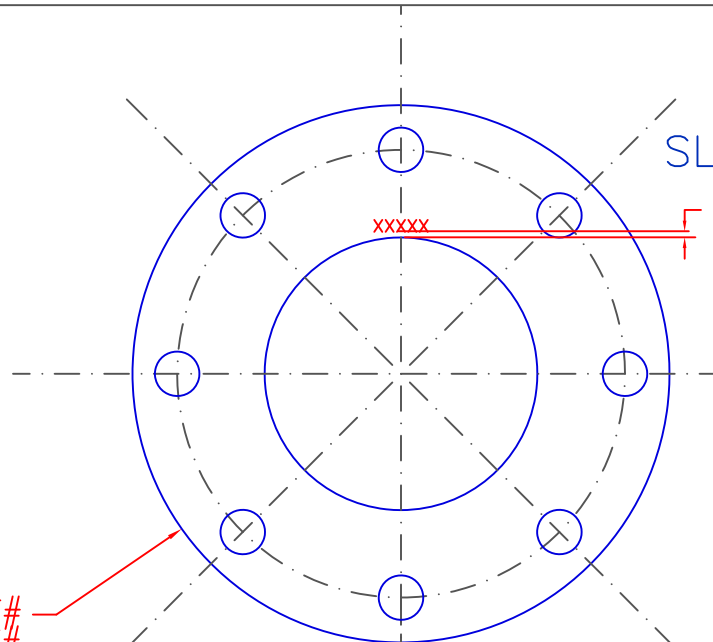


GTD111219

API DRAWING#
MARKINGS-STANDARD-072202

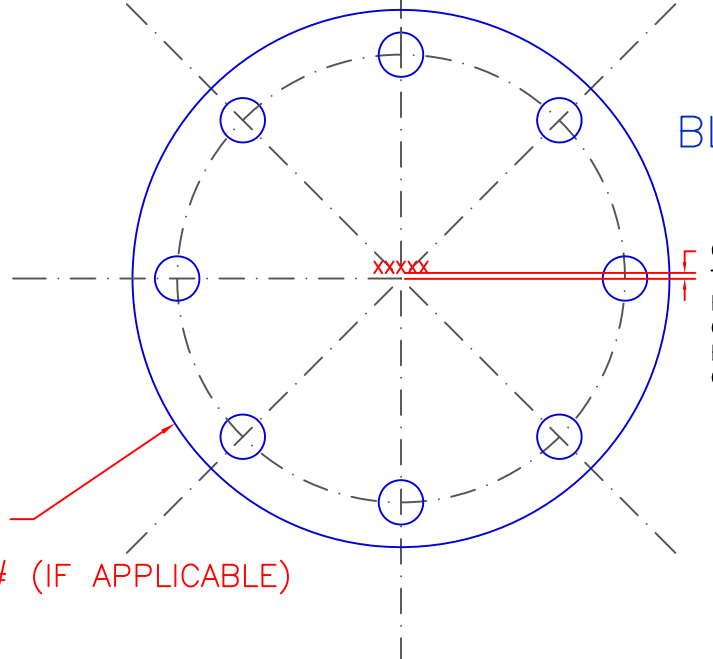
SLIP-ON FLANGES



COUNTRY OF ORIGIN
TO BE STAMPED WITH 1/8"
HIGH LETTERS OR ETCHED
ON THE SIDE OPPOSITE OF
SERRATED FACE AND MUST
BE WITHIN 0.10" MAXIMUM
FROM I.D.

PART#
HEAT#
AWWA# (IF APPLICABLE)

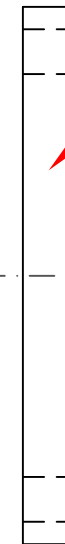
BLIND FLANGES



COUNTRY OF ORIGIN
TO BE STAMPED WITH 1/8"
HIGH LETTERS OR ETCHED
ON SERRATED FACE AND MUST
BE LOCATED CLOSE TO CENTER
OF FLANGE.

PART#
HEAT#
AWWA# (IF APPLICABLE)

SIDE VIEW



ALL STAMPING WITH ~1/8" HIGH LETTERS:

1. PART NUMBER
2. HEAT NUMBER
3. SIZE
4. MFG LOGO (OR INITIALS)
5. A105 (IF A105 MATERIAL)
6. AWWA STAMP (AS FOLLOWS):

- AWWA-B (FOR "PFxxxx-B" FLANGES)
- AWWA-B (FOR "PFBLxxxx-B" FLANGES)
- AWWA-D (FOR "PFxxxx-D" FLANGES)
- AWWA-D (FOR "PFBLxxxx-D" FLANGES)
- AWWA-E (FOR "PFxxxx-E" FLANGES)
- AWWA-E (FOR "PFBLxxxx-E" FLANGES)
- AWWA-F (FOR "PFxxxx-F" FLANGES)
- AWWA-F (FOR "PFBLxxxx-F" FLANGES)

MATERIAL SPECIFICATIONS : N/A

REVISIONS

DATE	DESCRIPTION
1/7/2008	REMOVE MATERIAL MARKING.
	ADDED AWWA MARKING NOTE. GTD.
9/15/2014	REVISED AWWA MARKING NOTE. RG
11/12/2019	REV. 3 REVISED MARKINGS: ADDED MFG INITIALS, A105 MATERIAL STAMP. GTD.

TOLERANCES -- UNLESS OTHERWISE SPECIFIED

INSIDE DIA	+0.031, -0.00
OUTSIDE DIA	+0.125, -0.00
BOLT CIRCLE DIA	±0.063
BOLT HOLE DIA	+0.031, -0.00
THICKNESS	+0.125, -0
BH SPACING	±0.031

DO NOT SCALE DRAWING

DIMENSIONS ARE IN INCHES

DATE	10-16-01	SCALE	N. T. S.	SHEET 1 OF 1	PART #
DRAWN BY	MT & QT	CUSTOMER - MARKINGS			
API PART#		DESCRIPTION - FLANGE MARKINGS			



12505 SW HERMAN RD.
TUALATIN, OR 97062
TEL. 1-503-692-3800