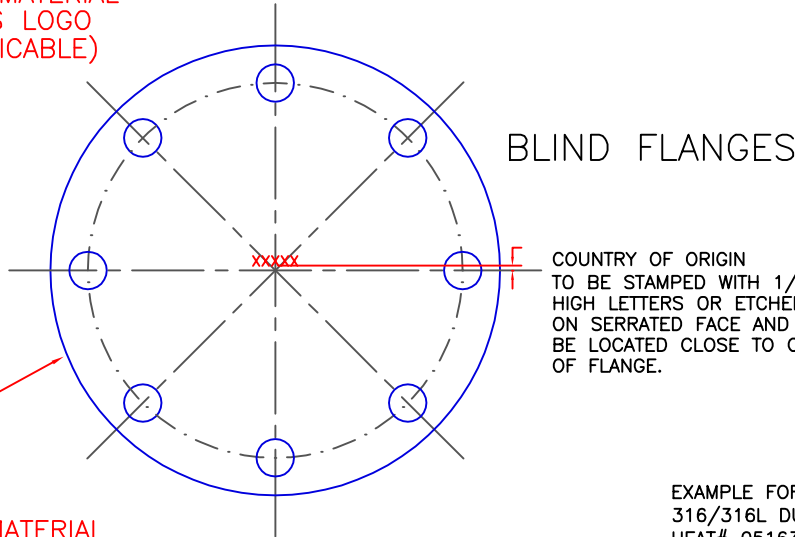


SLIP-ON FLANGES

COUNTRY OF ORIGIN  
TO BE STAMPED WITH 1/8"  
HIGH LETTERS OR ETCHED  
ON THE SIDE OPPOSITE OF  
SERRATED FACE AND MUST  
BE WITHIN 0.10" MAXIMUM  
FROM I.D.

PART#  
HEAT#  
SIZE  
MATERIAL SPEC/MATERIAL  
MANUFACTURER'S LOGO  
AWWA# (IF APPLICABLE)

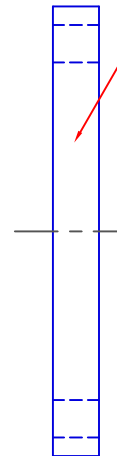


BLIND FLANGES

COUNTRY OF ORIGIN  
TO BE STAMPED WITH 1/8"  
HIGH LETTERS OR ETCHED  
ON SERRATED FACE AND MUST  
BE LOCATED CLOSE TO CENTER  
OF FLANGE.

PART#  
HEAT#  
SIZE  
MATERIAL SPEC/MATERIAL  
MANUFACTURER'S LOGO  
AWWA# (IF APPLICABLE)

SIDE VIEW



STAMP WITH 1/8" HIGH LETTERS ON O.D.  
PART NUMBER,  
HEAT NUMBER,  
SIZE,  
MATERIAL SPEC & MATERIAL,  
MFG LOGO OR INITIALS INSIDE A CIRCLE.  
"AWWA" CLASS... AS FOLLOWS (IF APPLICABLE):  
AWWA-SB (FOR "SPFxxxx-B" FLANGES)  
AWWA-SB (FOR "SPFBLxxxx-B FLANGES)  
AWWA-SD (FOR "SPFDxxxx" FLANGES)  
AWWA-SD (FOR "SPFBxxxx" FLANGES)

STAMP ONLY IF AWWA FLANGE

EXAMPLE FOR SPFD0800-16L;  
316/316L DUAL CERTIFIED, A182 FLANGE;  
HEAT# 05163; MFG BY "XYZ COMPANY";  
(STAMP THE FOLLOWING):

SPFD0800-16L HEAT#05163 8" A182 SS316/316L (XYZ) AWWA-SD

MATERIAL SPECIFICATIONS : N/A

REVISIONS	
DATE	DESCRIPTION

TOLERANCES -- UNLESS OTHERWISE SPECIFIED

INSIDE DIA	+0.031,-0.00
OUTSIDE DIA	+0.125,-0.00
BOLT CIRCLE DIA	±0.063
BOLT HOLE DIA	+0.031,-0.00
THICKNESS	+0.125,-0
BH SPACING	±0.031

DO NOT SCALE DRAWING

DIMENSIONS ARE IN INCHES



12505 SW HERMAN RD.  
TUALATIN, OR 97062  
TEL. 1-503-692-3800

DATE	09/15/10	SCALE	N. T. S.	SHEET	1 OF 1	PART #
BY	GTD	CUSTOMER -		DESCRIPTION - FLANGE MARKINGS		