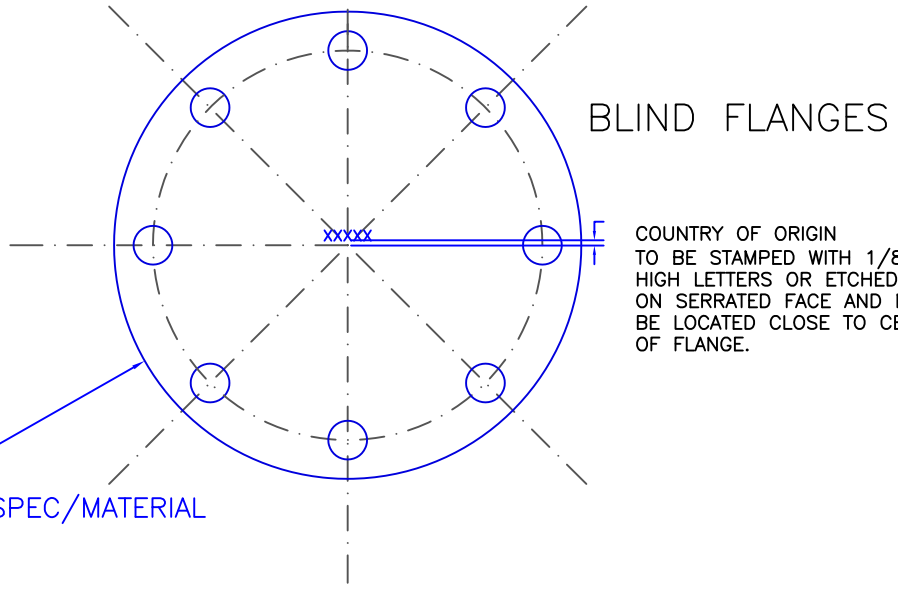


SLIP-ON FLANGES

COUNTRY OF ORIGIN TO BE STAMPED WITH 1/8" HIGH LETTERS OR ETCHED ON THE SIDE OPPOSITE OF SERRATED FACE AND MUST BE WITHIN 0.10" MAXIMUM FROM I.D.

PART#  
HEAT#  
MATERIAL SPEC/MATERIAL

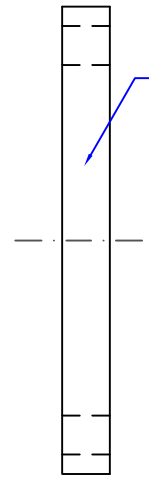


BLIND FLANGES

COUNTRY OF ORIGIN TO BE STAMPED WITH 1/8" HIGH LETTERS OR ETCHED ON SERRATED FACE AND MUST BE LOCATED CLOSE TO CENTER OF FLANGE.

PART#  
HEAT#  
MATERIAL SPEC/MATERIAL

SIDE VIEW



STAMP WITH 1/8" HIGH LETTERS ON O.D. PART NUMBER, HEAT NUMBER, MATERIAL & MATERIAL SPEC,

EXAMPLE FOR PFH0800; ASTM A36 MATERIAL (STAMP THE FOLLOWING):

PFH0800 HEAT# ASTM A36

MATERIAL SPECIFICATIONS : N/A

REVISIONS	
DATE	DESCRIPTION

TOLERANCES -- UNLESS OTHERWISE SPECIFIED

INSIDE DIA	+0.031, -0.00
OUTSIDE DIA	+0.125, -0.00
BOLT HOLE DIA	±0.063
BOLT HOLE DIA	+0.031, -0.00
THICKNESS	+0.125, -0
BH SPACING	±0.031

DO NOT SCALE DRAWING

DIMENSIONS ARE IN INCHES



12505 SW HERMAN RD.  
TUALATIN, OR 97062  
TEL. 1-503-692-3800

DATE	5/05/2020	SCALE: NOT TO SCALE	SHEET 1 OF 1
BY	GTD	CUSTOMER:	
DESCRIPTION: PFH/PFBH FLANGE MARKINGS			

PART #  
PFH PFBH